



ព្រឹត្តិបត្រថ្លៃអាហារ និងប្រាក់ឈ្នួលពលកម្មនៅកម្ពុជា



CAMBODIA FOOD PRICE AND WAGE BULLETIN

Agricultural Marketing
Office, DPS, MAFF

February 2014, Issue 60



HIGHLIGHTS

- **Food purchasing power of households** decreased 1.7% in rural areas and increased 0.9% in urban areas month-on-month.
- **Retail price of lowest quality rice** increased 2.9% in rural areas and remained stable in urban areas month-on-month.
- **Wholesale price of mixed rice** decreased 3.8% month-on-month and 1.2% year-on-year.
- The **Inflation Rate** was 4.6% in January. Food and gasoline prices decreased 0.2% and 0.1% respectively month-on-month.
- **FAO Food Price Index** averaged 208.1 points, a month-on-month increase of 2.3% due to strengthening quotation of all the commodity groups, except meat.
- **Thai and Vietnamese Export price of rice:** Thai rice prices increased 0.6% while export price of Vietnamese rice decreased 3.2% month-on-month.

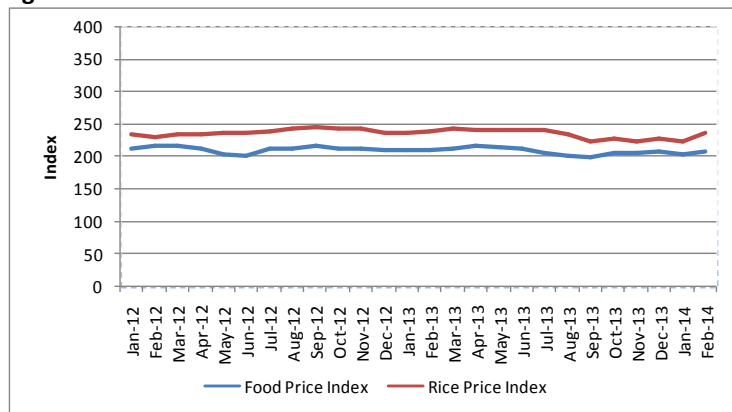
Overview

This Bulletin is a joint publication¹ by the Agricultural Marketing Office (Department of Planning and Statistics) of the Ministry of Agriculture, Forestry and Fisheries (AMO MAFF) and the United Nations World Food Programme Cambodia. It monitors the price of food commodities and wage rates of unskilled labor on a monthly basis. It also aims to detect changes and identify trends in the food purchasing power of vulnerable households.

International Food and Rice Prices

The FAO Food Price Index² measures the international price level of a basket of key food commodities. The index averaged 208.1 points in February 2014, an increase of 2.3% on a month-on-month basis due to upward pressure in all food commodity prices, except meat, which fell slightly. The International Rice Price Index averaged 237 points, an increase of 6.3% on a month-on-month basis, respectively.

Figure 1: FAO Food Price Index and Rice Price Index



Source: FAO, <http://www.fao.org/worldfoodsituation/wfs-home/foodpricesindex/en/>

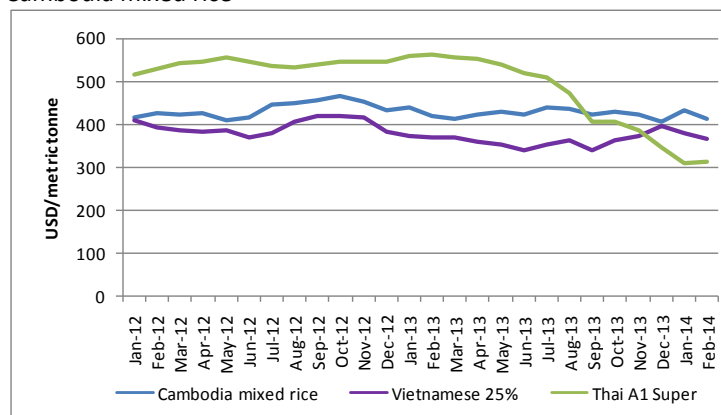
CONTENT

Overview.....	1
International Food and Rice Prices.....	1
Regional Rice Wholesale Prices.....	1
Cambodia Consumer Price Index (CPI).....	2
Local Food Commodity Prices.....	2
Price Monitoring and Forecasting.....	2
Unskilled Wage.....	3
Terms of Trade.....	3
Appendix 1: Sentinel Surveillance Market Sites.....	4
Appendix 2: Price of Food Commodities by Market.....	5

Regional Rice Wholesale Prices

In February 2014, the f.o.b. prices³ of Thai A1 Super white rice (100% broken) and Vietnamese white rice (25% broken) were 311 USD/mt and 368 USD/mt, respectively (Figure 2).

Figure 2: Export price of Thai and Vietnamese white rice and Cambodia mixed rice⁴



Source: FAO, <http://www.fao.org/es/esc/prices/PricesServlet.jsp?lang=en>

¹ This publication has been produced jointly since September 2011.

² The FAO Food Price Index consists of the average of commodity group price indices (i.e. meat, dairy, cereals, oils/fats, and sugar) weighted with the average export shares of each of the groups for 2002-2004.

³ Free on board (f.o.b.) price includes all charges up to the placing of goods on board a ship at the port of departure specified by the buyer.

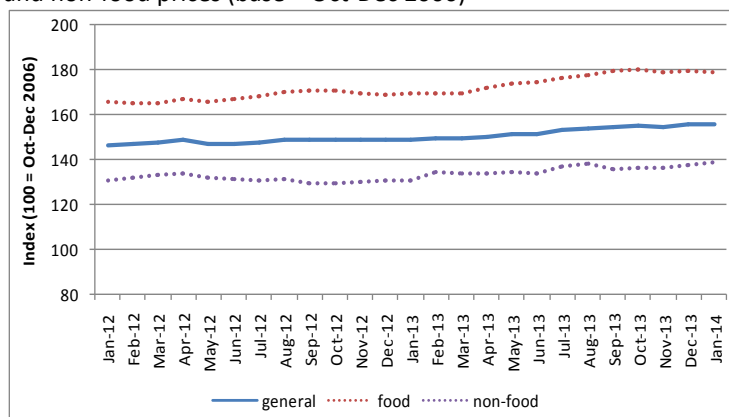
⁴ Mixed rice is considered a low-quality type of rice.

The export price of Thai A1 Super white rice increased by 0.6% month-on-month and 44.7% year-on-year. The price of Vietnamese white rice decreased by 3.2% month-on-month and increased by 0.3% on a year-on-year basis, respectively.

Cambodia Consumer Price Index (CPI)

The general Consumer Price Index (CPI)⁵ measures the cost of a consumption basket composed of 259 items. Each item is weighted based on their importance in an average household's expenditure⁶. In January 2014, the general CPI averaged 156.0 points, an increase of 0.3% month-on-month. The inflation rate, as measured by the year-on-year increase in the CPI, was 4.6%. Non-food prices averaged 138.7 points, increasing by 0.8% month-on-month. Gasoline prices decreased slightly 0.1% month-on-month and were 5.1% lower compared to same period last year. The Food Price Index (FPI) measures the cost of the food items in the general CPI's consumption basket. Food items comprise 43.2% of the total consumption basket. In January 2014, the FPI was 179.0, a decrease of 0.2% month-on-month and 5.7% year-on-year basis (Figure 3).

Figure 3: Relative change in general consumer prices, food prices and non-food prices (base = Oct-Dec 2006)

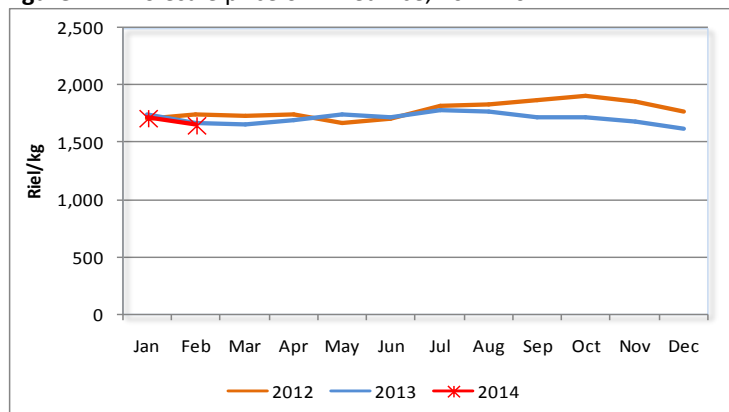


Source: National Institute of Statistics

Local Food Commodity Prices

According to data⁷ from AMO MAFF, the average wholesale price of mixed rice was 1,653 riel/kg in February 2014, a month-on-month decrease of 3.8%. In nominal terms, prices fell by 1.2% from the previous year (Figure 4). In real terms, the wholesale price of mixed rice was 5.8% lower than February 2013.

Figure 4: Wholesale price of mixed rice, 2012-2014



Source: AMO MAFF, <http://www.agriculturalmarketinformation.org.kh>

⁵ The CPI is collected and reported by the National Institute of Statistics (NIS). Data from February 2014 was not available at the time of publication.

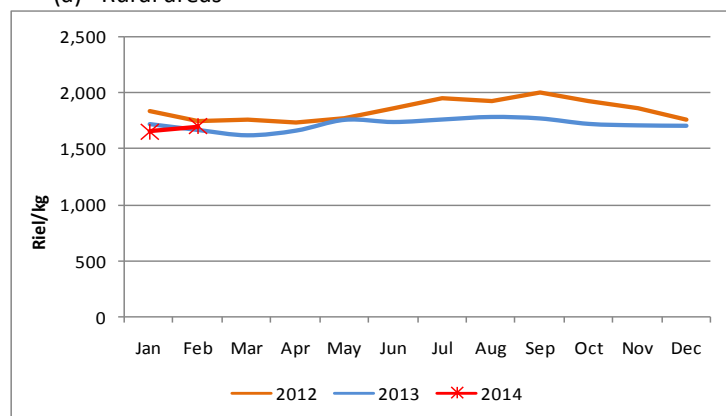
⁶ Relative item expenditure weights are derived from the 2004 Cambodia Socio-Economic Survey and adjusted to October-December 2006 price levels.

⁷ From provincial markets in Kampong Chhnang, Takeo, Siem Reap, Prey Veng, Phnom Penh, Kampong Speu, Battambang, Banteay Meanchey, and Kampong Cham

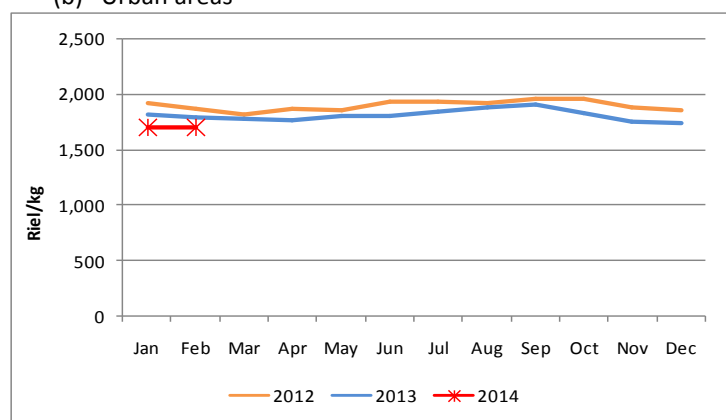
In February 2014, the average retail price of the lowest quality rice⁸ in rural and urban areas was 1,700 riel/kg and 1,701 riel/kg, respectively, increased by 2.9% in rural areas and remained stable in urban areas (Figure 5).

Figure 5 (a)(b): Retail price of lowest quality rice, 2011-2013

(a) Rural areas



(b) Urban areas



Source: WFP

In February 2014, nominal retail rice prices in rural areas increased 1.7% and decreased 5.1% in urban areas on a year-on-year basis. In real terms, retail price of rice in rural and urban areas were 2.9% and 9.7% lower than the same period in the previous year, respectively. Interviewed rice traders in rural areas attributed the slight rise to the increased demand from consumers.

Retail prices of other food commodities (i.e. second quality rice, vegetable oil, smoked fish, fresh fish, pork, and duck eggs) in each of the 10 rural and 11 urban markets are presented in Appendix 2.

Price Monitoring and Forecasting

FAO's price monitoring tool compares recent actual wholesale prices from AMO MAFF with "normal" price levels. The normal price level takes into account historical price levels and adjusts for inflation and seasonal factors. A discrepancy between current actual prices and "normal" prices indicates that current prices are higher or lower than what would be expected. In February 2014, the actual wholesale price of mixed rice was 8.4% lower than the expected normal historical price⁹.

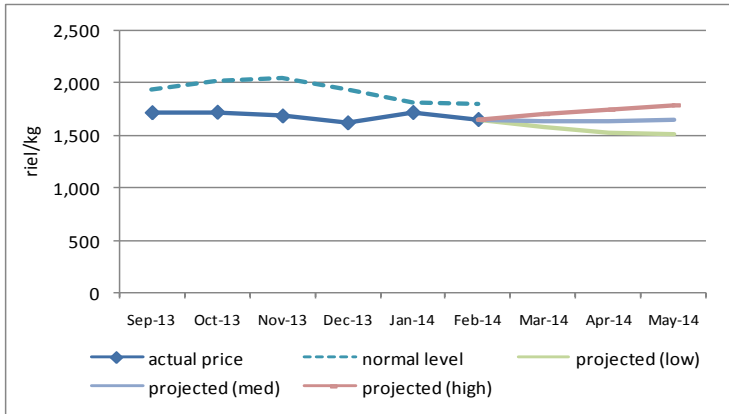
The price monitoring tool also projects prices based on the current price, current inflation rate and seasonal factors. The high and low bands are set so that actual prices will fall within the range 80% of the time. Prices for the next three months (March, April and May) were projected. If prices follow normal seasonal patterns during

⁸ Mixed rice, IR rice and Banla Pdao rice

⁹ 2008 prices are excluded from the FAO price monitoring tool analysis as the food price crisis in mid-2008 distorts the seasonal factors.

next three months, the model forecasts that wholesale rice prices are expected to marginally increase in the upcoming quarter (Figure 6).

Figure 6: Normal and projected prices of wholesale rice



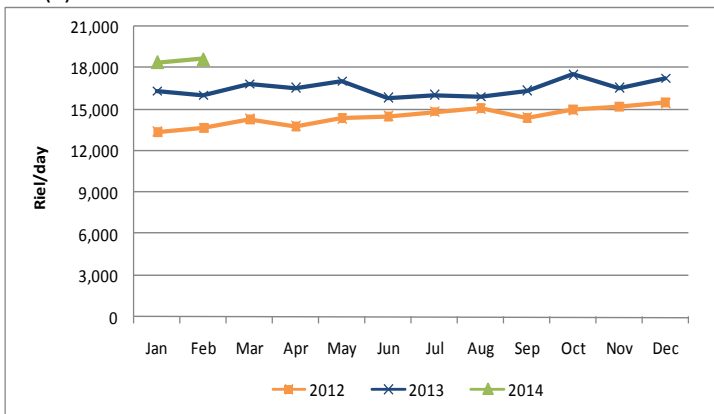
Source: AMO, WFP, FAO

Unskilled Wage

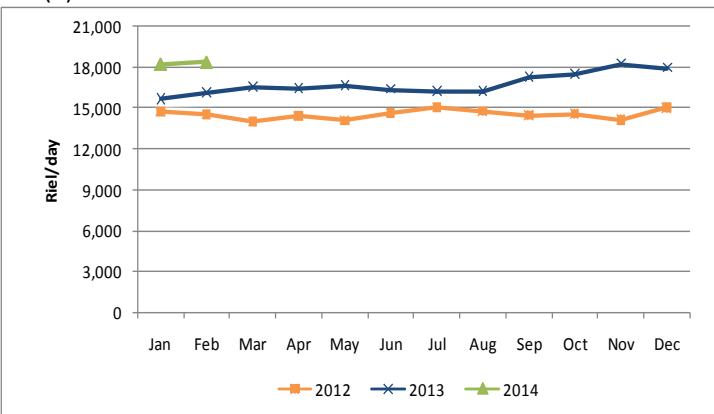
Daily wages of unskilled workers engaged in rice and non-rice farming and construction work are monitored by WFP on a monthly basis. In February 2014, the average wage of unskilled labor was 18,650 riel/day in rural areas and 18,400 riel/day in urban areas, an increase of 1.2% and 0.8% on a month-on-month basis, respectively (Figure 7). In rural areas the upward trend in unskilled wage rate was driven by increased labor demand due to the wet and dry season rice harvest and dry season rice land preparation and planting. In urban areas, the increase in unskilled wages was due to on-going construction works which positively affects demand for unskilled labor in the construction sector.

Figure 7(a)(b): Daily wage of unskilled labor

(a) Rural areas



(b) Urban areas



Source: WFP

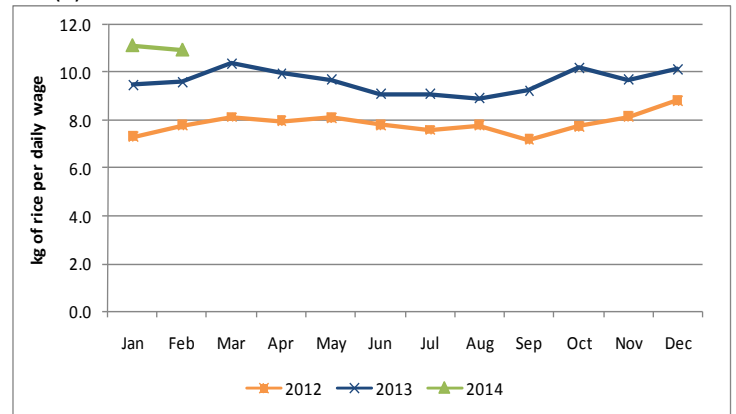
Terms of Trade

Terms of trade (ToT) is used to assess household purchasing power by taking the ratio of two different components. In this bulletin, the ToT takes the ratio of the daily wage rates of unskilled laborers and the retail price of lowest quality rice in the market. This gives an indication of the amount of rice that an unskilled wage laborer can purchase with a daily wage.

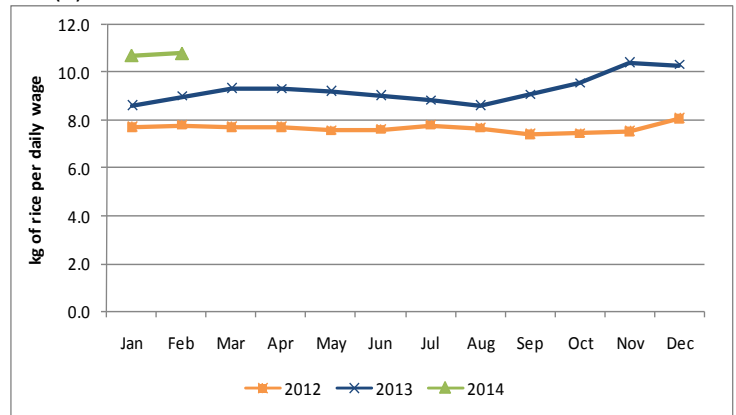
In February 2014, the ToT in rural areas was 11.0 kg/day and 10.8 kg/day in urban areas, a month-on-month decrease of 1.7% in rural areas and an increase of 0.9% in urban areas. In rural areas increase in rice prices outweighed the increase in unskilled wage causing households purchasing power to deteriorate. Conversely, in urban areas, stabilized rice prices and slight increase in unskilled wages caused purchasing power of vulnerable households to improve. (Figure 8).

Figure 8(a)(b): Terms of Trade of unskilled labor and rice

(a) Rural areas

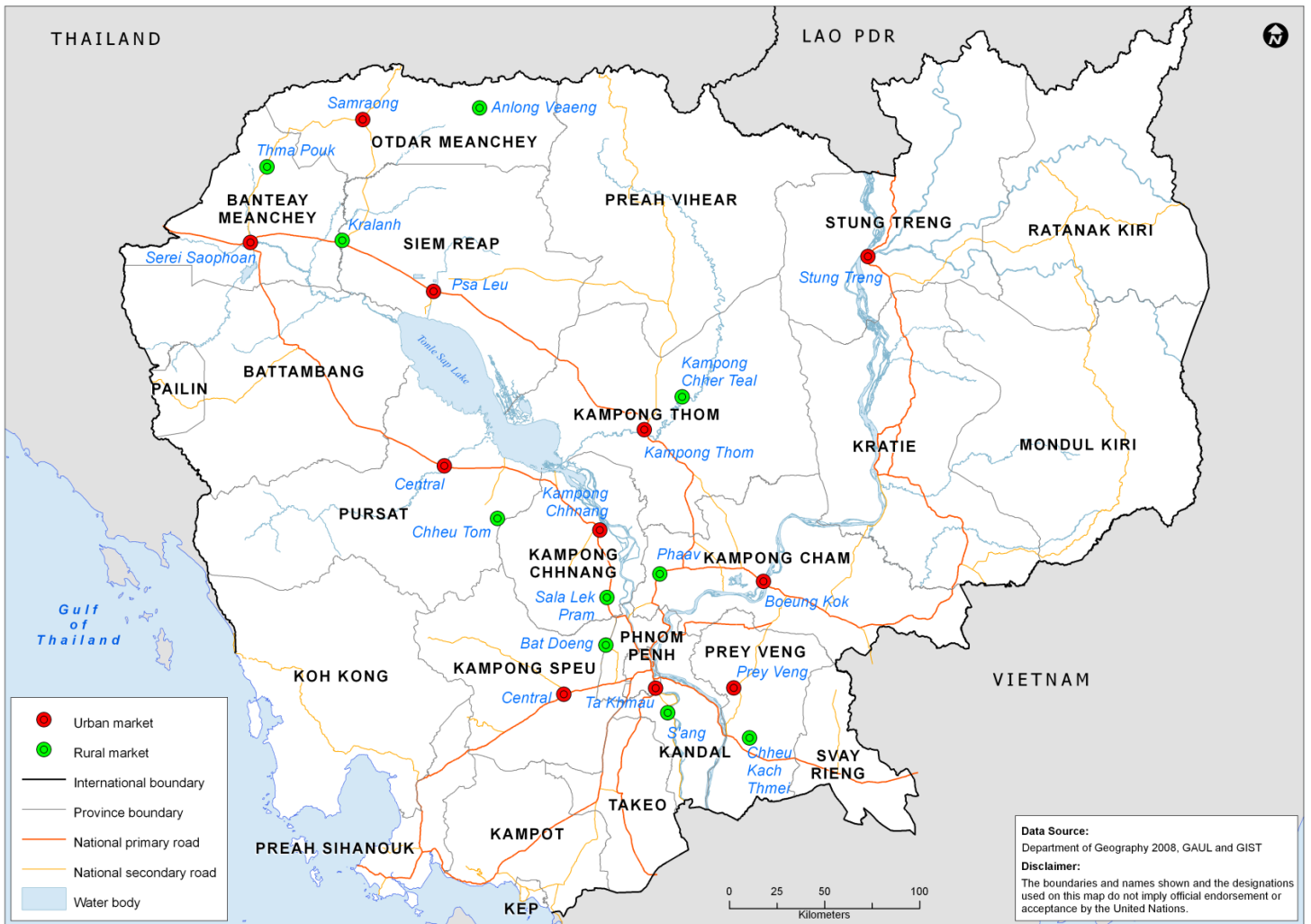


(b) Urban areas



Source: WFP

Appendix 1: Location of sentinel market sites in urban and rural areas in Cambodia



Contacts

Agricultural Marketing Office

Department of Planning and Statistics, Ministry of Agriculture,
Forestry and Fisheries
Mr. Meach Yady (meachyady@gmail.com)
<http://www.agriculturalmarketinformation.org.kh>

United Nations World Food Programme

Vulnerability Analysis and Mapping (VAM) Unit
Yav Long (Yav.Long@wfp.org)
Rukhshona Rajabova (rukshona.rajabova@wfp.org)
Chanvibol Choeur (Chanvibol.Choeur@wfp.org)
www.wfp.org/countries/cambodia

Appendix 2(a)(b): Retail price of food commodities by market

(a) Rural markets

Food Item	Province	Market	price (Riel/kg)	price change (%)			direction of change		
				1 month	3 months	1 year	1 month	3 months	1 year
Second quality rice	Banteay Meanchey	Thma Puok	-	-	-	-	-	-	-
	Siem Reap	Kralanh	2,467	0.0	-	54.2	-	-	↑
	Oddar Meanchey	Anlong Veng	2,200	-4.3	1.5	1.5	↔	↔	↔
	Kampong Cham	Pha'av	1,667	6.4	-5.7	12.4	↑	↔	↔
	Kampong Thom	Kampong Chhouteal	1,800	-	4.9	-5.3	-	↔	↔
	Prey Veng	Chheu Kach Thmei	-	-	-	-	-	-	-
	Kampong Chhnang	Sala Lek Pram	1,833	10.0	-17.9	8.7	↑	↓	↔
	Kampong Speu	Bat Doeng	2,000	0.0	0.0	-	↔	↔	-
	Pursat	Chheu Tom	-	-	-	-	-	-	-
	Stung Treng	n/a	-	-	-	-	-	-	-
Kandal	S'ang	1,950	-4.9	-11.4	-2.5	↔	↓	↔	
Lowest quality rice	Banteay Meanchey	Thma Puok	1,900	-5.0	-5.0	-5.0	↔	↔	↔
	Siem Reap	Kralanh	1,800	0.0	28.6	12.0	↔	↑	↔
	Oddar Meanchey	Anlong Veng	1,567	-2.1	-19.0	-4.1	↔	↓	↔
	Kampong Cham	Pha'av	1,700	9.7	13.3	21.4	↑	↑	↑
	Kampong Thom	Kampong Chhouteal	1,600	-	-	-	-	-	-
	Prey Veng	Chheu Kach Thmei	1,500	7.1	7.1	7.1	↑	↔	↔
	Kampong Chhnang	Sala Lek Pram	1,733	10.6	-1.0	14.0	↑	↔	↔
	Kampong Speu	Bat Doeng	2,000	-	0.0	3.4	-	↔	↔
	Pursat	Chheu Tom	1,500	0.0	-6.3	-11.8	↔	↔	↔
	Stung Treng	n/a	-	-	-	-	-	-	-
Kandal	S'ang	1,700	-5.6	-5.6	-8.1	↓	↔	↔	
Vegetable oil	Banteay Meanchey	Thma Puok	6,043	-8.3	-5.7	-2.9	↓	↔	↔
	Siem Reap	Kralanh	5,333	0.0	-2.9	8.1	↔	↔	↔
	Oddar Meanchey	Anlong Veng	6,410	6.1	20.2	24.1	↑	↑	↑
	Kampong Cham	Pha'av	5,000	0.0	0.0	11.9	↔	↔	↔
	Kampong Thom	Kampong Chhouteal	5,500	-2.9	0.0	6.5	↔	↔	↔
	Prey Veng	Chheu Kach Thmei	5,000	0.0	-8.0	-3.2	↔	↔	↔
	Kampong Chhnang	Sala Lek Pram	6,533	16.7	16.7	24.1	↑	↑	↑
	Kampong Speu	Bat Doeng	5,000	0.0	-9.1	1.4	↔	↔	↔
	Pursat	Chheu Tom	5,467	1.9	1.9	9.3	↔	↔	↔
	Stung Treng	n/a	-	-	-	-	-	-	-
Kandal	S'ang	5,267	1.3	-0.6	12.1	↔	↔	↔	
Smoked fish	Banteay Meanchey	Thma Puok	-	-	-	-	-	-	-
	Siem Reap	Kralanh	-	-	-	-	-	-	-
	Oddar Meanchey	Anlong Veng	-	-	-	-	-	-	-
	Kampong Cham	Pha'av	14,750	22.9	-	-47.8	↑	-	↓
	Kampong Thom	Kampong Chhouteal	16,000	0.0	-	-	↔	-	-
	Prey Veng	Chheu Kach Thmei	16,600	-11.7	-10.3	-9.5	↓	↓	↔
	Kampong Chhnang	Sala Lek Pram	12,500	-26.5	-37.5	-19.6	↓	↓	↓
	Kampong Speu	Bat Doeng	24,000	46.9	20.0	18.0	↑	↑	↑
	Pursat	Chheu Tom	-	-	-	-	-	-	-
	Stung Treng	n/a	-	-	-	-	-	-	-
Kandal	S'ang	-	-	-	-	-	-	-	

Food Item	Province	Market	price (Riel/kg)	price change (%)			direction of change		
				1 month	3 months	1 year	1 month	3 months	1 year
Fresh fish	Banteay Meanchey	Thma Puok	-	-	-	-	-	-	-
	Siem Reap	Kralanh	5,167	0.0	-	-	-	-	-
	Oddar Meanchey	Anlong Veng	4,833	7.4	-6.5	7.4	↑	↔	↔
	Kampong Cham	Pha'av	6,333	5.6	9.8	31.0	↑	↔	↑
	Kampong Thom	Kampong Chhouteal	8,000	-	-	-	-	-	-
	Prey Veng	Chheu Kach Thmei	-	-	-	-	-	-	-
	Kampong Chhnang	Sala Lek Pram	5,833	0.0	2.9	-	↔	↔	-
	Kampong Speu	Bat Doeng	6,000	0.0	0.0	2.9	↔	↔	↔
	Pursat	Chheu Tom	6,000	0.0	0.0	20.0	↔	↔	↑
	Stung Treng	n/a	-	-	-	-	-	-	-
Kandal	S'ang	5,750	-	-4.2	-4.2	-	↔	↔	
Pork with fat	Banteay Meanchey	Thma Puok	15,000	0.0	0.0	25.0	↔	↔	↑
	Siem Reap	Kralanh	12,000	0.0	0.0	0.0	↔	↔	↔
	Oddar Meanchey	Anlong Veng	13,333	8.1	17.6	21.2	↑	↑	↑
	Kampong Cham	Pha'av	14,000	0.0	0.0	7.7	↔	↔	↔
	Kampong Thom	Kampong Chhouteal	14,000	5.0	16.7	31.3	↔	↑	↑
	Prey Veng	Chheu Kach Thmei	14,000	7.7	16.7	16.7	↑	↑	↑
	Kampong Chhnang	Sala Lek Pram	14,333	4.9	13.2	16.2	↔	↑	↑
	Kampong Speu	Bat Doeng	14,000	0.0	0.0	0.0	↔	↔	↔
	Pursat	Chheu Tom	15,000	0.0	7.1	13.9	↔	↔	↔
	Stung Treng	n/a	-	-	-	-	-	-	-
Kandal	S'ang	15,667	-7.8	4.4	8.0	↓	↔	↔	
Duck egg	Banteay Meanchey	Thma Puok	617	-11.9	-9.8	2.8	↓	↔	↔
	Siem Reap	Kralanh	617	0.0	23.3	15.6	↔	↑	↑
	Oddar Meanchey	Anlong Veng	567	-8.1	-8.1	-5.6	↓	↔	↔
	Kampong Cham	Pha'av	517	3.3	3.3	3.3	↔	↔	↔
	Kampong Thom	Kampong Chhouteal	500	-6.3	-6.3	-	↓	↔	-
	Prey Veng	Chheu Kach Thmei	500	4.2	0.0	0.0	↔	↔	↔
	Kampong Chhnang	Sala Lek Pram	483	-4.6	-7.1	-9.4	↔	↔	↔
	Kampong Speu	Bat Doeng	550	-	0.0	-5.7	-	↔	↔
	Pursat	Chheu Tom	500	3.4	3.4	11.1	↔	↔	↔
	Stung Treng	n/a	-	-	-	-	-	-	-
Kandal	S'ang	493	-10.3	-11.9	-9.8	↓	↓	↔	

- ↑ Price increase above normal fluctuation
- ↔ Normal price fluctuation
- ↓ Price decrease below normal fluctuation
- Commodity not available in reporting month

Price fluctuation is considered normal if change within:
5% for month, 10% for 3 months, 15% for 1 year

(b) Urban markets

Food Item	Province	Market	price (Riel/kg)	price change (%)			direction of change		
				1 month	3 months	1 year	1 month	3 months	1 year
Second quality rice	Banteay Meanchey	Serei Saophoan	2,500	4.2	6.4	19.0	↔	↔	↕
	Siem Reap	Psa Leu	2,300	0.0	0.0	25.5	↔	↔	↕
	Oddar Meanchey	Samraong	-	-	-	-	-	-	-
	Kampong Cham	Boeung Kok	1,500	-21.1	-22.4	-31.8	↘	↘	↘
	Kampong Thom	Central	1,800	1.9	3.8	8.0	↔	↔	↔
	Prey Veng	Central	1,733	-8.8	-17.5	-1.0	↘	↘	↔
	Kampong Chhnang	Central	1,767	0.0	-18.5	0.0	↔	↘	↔
	Kampong Speu	Central	1,900	9.6	-3.4	-3.4	↕	↔	↔
	Pursat	Central	2,033	1.7	0.0	-14.1	↔	↔	↘
	Stung Treng	Stung Treng	1,983	-	10.2	-	-	↕	-
Kandal	Ta Khmao	2,000	-	0.0	-9.1	-	↔	↔	
Lowest quality rice	Banteay Meanchey	Serei Saophoan	2,000	0.0	5.3	5.3	↔	↔	↔
	Siem Reap	Psa Leu	1,633	2.1	4.3	4.3	↔	↔	↔
	Oddar Meanchey	Samraong	1,867	-3.4	-3.4	-6.7	↔	↔	↔
	Kampong Cham	Boeung Kok	1,517	-	-	-7.1	-	-	↔
	Kampong Thom	Central	1,600	0.0	0.0	0.0	↔	↔	↔
	Prey Veng	Central	1,600	0.0	0.0	-	↔	↔	-
	Kampong Chhnang	Central	1,633	0.0	-5.8	-	↔	↔	-
	Kampong Speu	Central	1,700	6.3	-1.9	-5.6	↕	↔	↔
	Pursat	Central	1,567	-5.1	-13.0	-15.3	↘	↘	↘
	Stung Treng	Stung Treng	1,800	-	-	-	-	-	-
Kandal	Ta Khmao	1,800	-	0.0	-10.0	-	↔	↔	
Vegetable oil	Banteay Meanchey	Serei Saophoan	6,593	9.9	20.8	-4.0	↕	↕	↔
	Siem Reap	Psa Leu	5,463	1.4	1.2	10.7	↔	↔	↔
	Oddar Meanchey	Samraong	6,043	0.0	13.3	13.3	↔	↕	↔
	Kampong Cham	Boeung Kok	5,400	0.0	3.2	13.3	↔	↔	↔
	Kampong Thom	Central	5,500	-0.3	0.0	10.0	↔	↔	↔
	Prey Veng	Central	5,667	0.0	1.8	13.3	↔	↔	↔
	Kampong Chhnang	Central	4,933	-5.1	-9.8	5.7	↘	↔	↔
	Kampong Speu	Central	5,167	1.3	-6.1	3.3	↔	↔	↔
	Pursat	Central	5,467	-3.5	-0.6	4.1	↔	↔	↔
	Stung Treng	Stung Treng	5,167	-	-8.8	-	-	↔	-
Kandal	Ta Khmao	5,500	0.6	0.0	11.5	↔	↔	↔	
Smoked fish	Banteay Meanchey	Serei Saophoan	-	-	-	-	-	-	-
	Siem Reap	Psa Leu	-	-	-	-	-	-	-
	Oddar Meanchey	Samraong	-	-	-	-	-	-	-
	Kampong Cham	Boeung Kok	20,167	-3.0	-	-4.0	↔	-	↔
	Kampong Thom	Central	16,250	-34.7	-	-18.8	↘	-	↘
	Prey Veng	Central	-	-	-	-	-	-	-
	Kampong Chhnang	Central	21,000	23.5	-12.5	26.8	↕	↘	↕
	Kampong Speu	Central	25,333	8.3	5.7	-	↕	↔	-
	Pursat	Central	-	-	-	-	-	-	-
	Stung Treng	Stung Treng	20,000	-	-	-	-	-	-
Kandal	Ta Khmao	-	-	-	-	-	-	-	

Food Item	Province	Market	price (Riel/kg)	price change (%)			direction of change		
				1 month	3 months	1 year	1 month	3 months	1 year
Fresh fish	Banteay Meanchey	Serei Saophoan	-	-	-	-	-	-	-
	Siem Reap	Psa Leu	5,000	0.0	1.4	-	↔	↔	-
	Oddar Meanchey	Samraong	5,000	-4.8	-9.1	4.2	↔	↔	↔
	Kampong Cham	Boeung Kok	6,033	-24.6	-7.2	20.7	↘	↔	↕
	Kampong Thom	Central	-	-	-	-	-	-	-
	Prey Veng	Central	5,500	-4.3	-12.0	10.0	↔	↘	↔
	Kampong Chhnang	Central	-	-	-	-	-	-	-
	Kampong Speu	Central	6,500	8.3	8.3	8.3	↕	↔	↔
	Pursat	Central	-	-	-	-	-	-	-
	Stung Treng	Stung Treng	5,933	-	-8.7	-	-	↔	-
Kandal	Ta Khmao	-	-	-	-	-	-	-	
Pork with fat	Banteay Meanchey	Serei Saophoan	15,667	4.4	4.4	9.3	↔	↔	↔
	Siem Reap	Psa Leu	13,667	5.1	5.1	13.9	↕	↔	↔
	Oddar Meanchey	Samraong	15,000	0.0	7.1	36.4	↔	↔	↕
	Kampong Cham	Boeung Kok	16,667	-2.0	4.2	11.1	↔	↔	↔
	Kampong Thom	Central	13,000	0.0	0.0	8.3	↔	↔	↔
	Prey Veng	Central	15,000	0.0	0.0	7.1	↔	↔	↔
	Kampong Chhnang	Central	16,333	6.5	-	11.4	↕	-	↔
	Kampong Speu	Central	15,000	4.7	15.4	25.0	↔	↕	↕
	Pursat	Central	15,000	7.1	7.1	15.4	↕	↔	↕
	Stung Treng	Stung Treng	14,000	-	7.7	-	-	↔	-
Kandal	Ta Khmao	17,333	-1.9	8.3	13.0	↔	↔	↔	
Duck egg	Banteay Meanchey	Serei Saophoan	533	0.0	-5.9	6.7	↔	↔	↔
	Siem Reap	Psa Leu	540	-0.6	-1.8	-1.8	↔	↔	↔
	Oddar Meanchey	Samraong	550	-8.3	-10.8	-8.3	↘	↘	↔
	Kampong Cham	Boeung Kok	497	-3.9	-2.0	-2.7	↔	↔	↔
	Kampong Thom	Central	500	-	-4.8	-	-	↔	-
	Prey Veng	Central	500	-	0.0	-11.8	-	↔	↔
	Kampong Chhnang	Central	493	-1.3	5.7	-5.7	↔	↔	↔
	Kampong Speu	Central	550	0.0	-0.6	0.6	↔	↔	↔
	Pursat	Central	493	2.1	-7.5	-1.3	↔	↔	↔
	Stung Treng	Stung Treng	550	-	0.0	-	-	↔	-
Kandal	Ta Khmao	523	-1.9	-4.3	-4.3	↔	↔	↔	

- ↕ Price increase above normal fluctuation
- ↔ Normal price fluctuation
- ↘ Price decrease below normal fluctuation
- Commodity not available in reporting month

Price fluctuation is considered normal if change within:
5% for month, 10% for 3 months, 15% for 1 year