



# ព្រឹត្តិបត្រថ្លៃអាហារ និងប្រាក់ឈ្នួលពលកម្មនៅកម្ពុជា



## CAMBODIA FOOD PRICE AND WAGE BULLETIN

Agricultural Marketing  
Office, DPS, MAFF

March 2014, Issue 61



### HIGHLIGHTS

- **Food purchasing power of households** increased in rural and urban areas 2.7% and 1.4% month-on-month.
- **Retail price of lowest quality rice** decreased 1.3% in rural areas and increased 1.5% in urban areas month-on-month.
- **Wholesale price of mixed rice** increased 1.6% month-on-month and 1.6% year-on-year.
- The **Inflation Rate** was 4.3% in February. Food prices decreased 0.2% and gasoline prices increased 0.8% month-on-month.
- **FAO Food Price Index** averaged 212.8 points, a month-on-month increase of 2.3% due to unfavorable weather conditions affecting some crops.
- **Thai and Vietnamese Export price of rice:** Thai rice prices increased 0.3% while export price of Vietnamese rice decreased 2.7% month-on-month.

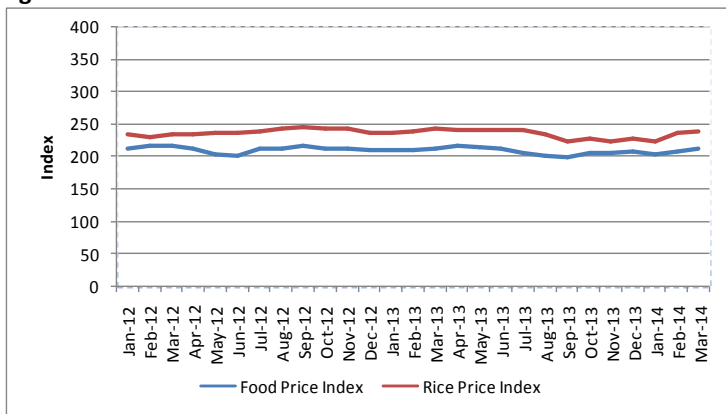
### Overview

This Bulletin is a joint publication<sup>1</sup> by the Agricultural Marketing Office (Department of Planning and Statistics) of the Ministry of Agriculture, Forestry and Fisheries (AMO MAFF) and the United Nations World Food Programme Cambodia. It monitors the price of food commodities and wage rates of unskilled labor on a monthly basis. It also aims to detect changes and identify trends in the food purchasing power of vulnerable households.

### International Food and Rice Prices

The FAO Food Price Index<sup>2</sup> measures the international price level of a basket of key food commodities. The index averaged 212.8 points in March 2014, an increase of 2.3% on a month-on-month basis mainly due to weather conditions affecting some crops and geopolitical issues in the Black Sea region. The International Rice Price Index averaged 238 points, a slight increase of 0.4% on a month-on-month basis, respectively.

Figure 1: FAO Food Price Index and Rice Price Index



Source: FAO, <http://www.fao.org/worldfoodsituation/wfs-home/foodpricesindex/en/>

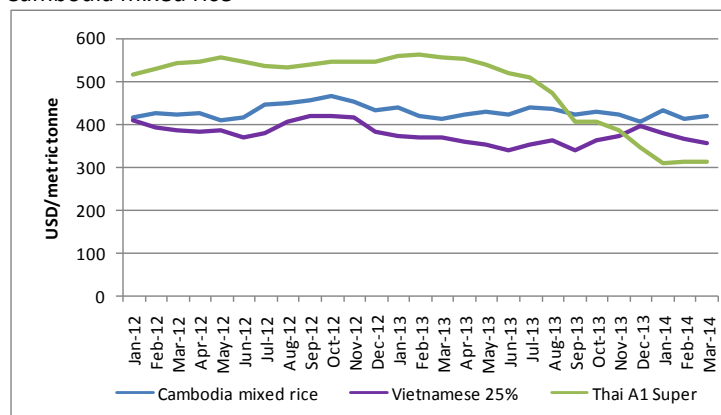
### CONTENT

Overview.....	1
International Food and Rice Prices.....	1
Regional Rice Wholesale Prices.....	1
Cambodia Consumer Price Index (CPI).....	2
Local Food Commodity Prices.....	2
Price Monitoring and Forecasting.....	2
Unskilled Wage.....	3
Terms of Trade.....	3
Appendix 1: Sentinel Surveillance Market Sites.....	4
Appendix 2: Retail Price of Food Commodities by Market.....	5

### Regional Rice Wholesale Prices

In March 2014, the f.o.b. prices<sup>3</sup> of Thai A1 Super white rice (100% broken) and Vietnamese white rice (25% broken) were 312 USD/mt and 358 USD/mt, respectively (Figure 2).

Figure 2: Export price of Thai and Vietnamese white rice and Cambodia mixed rice<sup>4</sup>



Source: FAO, <http://www.fao.org/es/esc/prices/PricesServlet.jsp?lang=en>

<sup>1</sup> This publication has been produced jointly since September 2011.

<sup>2</sup> The FAO Food Price Index consists of the average of commodity group price indices (i.e. meat, dairy, cereals, oils/fats, and sugar) weighted with the average export shares of each of the groups for 2002-2004.

<sup>3</sup> Free on board (f.o.b.) price includes all charges up to the placing of goods on board a ship at the port of departure specified by the buyer.

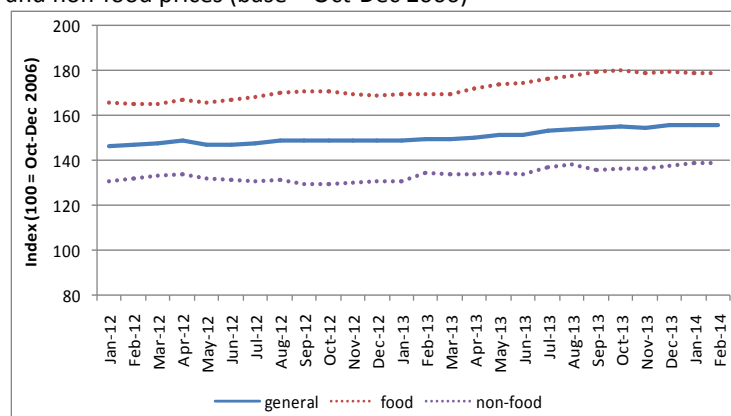
<sup>4</sup> Mixed rice is considered a low-quality type of rice.

The export price of Thai A1 Super white rice increased 0.3% month-on-month and decreased 44.0% year-on-year. According to Oryza, Thailand problems due to the rice pledging scheme are likely to end as the demand for Thai rice has been increasing since the beginning of this year. The price of Vietnamese white rice decreased 2.7% month-on-month and 3.0% on a year-on-year basis, respectively. According to Vietnam Food Association, to increase its competitiveness with falling prices of Thai rice, the export prices of Vietnamese rice has been lowered second time in two months.

### Cambodia Consumer Price Index (CPI)

The general Consumer Price Index (CPI)<sup>5</sup> measures the cost of a consumption basket composed of 259 items. Each item is weighted based on their importance in an average household's expenditure<sup>6</sup>. In February 2014, the general CPI averaged 156.0 points, remained stable month-on-month. The inflation rate, as measured by the year-on-year increase in the CPI, was 4.3%. Non-food prices averaged 138.8 points, increasing by 0.1% month-on-month. Gasoline prices increased 0.8% month-on-month and were 6.3% lower compared to same period last year. The Food Price Index (FPI) measures the cost of the food items in the general CPI's consumption basket. Food items comprise 43.2% of the total consumption basket. In February 2014, the FPI was 178.7, a decrease of 0.2% month-on-month and increase of 5.3% year-on-year basis (Figure 3).

**Figure 3:** Relative change in general consumer prices, food prices and non-food prices (base = Oct-Dec 2006)

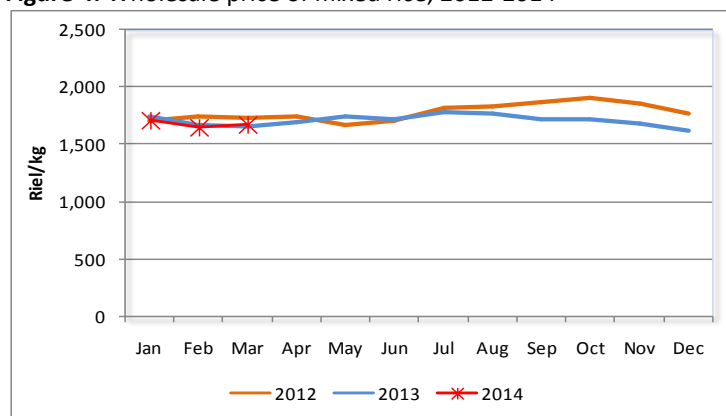


Source: National Institute of Statistics

### Local Food Commodity Prices

According to data<sup>7</sup> from AMO MAFF, the average wholesale price of mixed rice was 1,679 riel/kg in March 2014, a month-on-month increase of 1.6%. In nominal terms, prices increased by 1.6% from the previous year (Figure 4). In real terms, the wholesale price of mixed rice was 5.9% lower than March 2013.

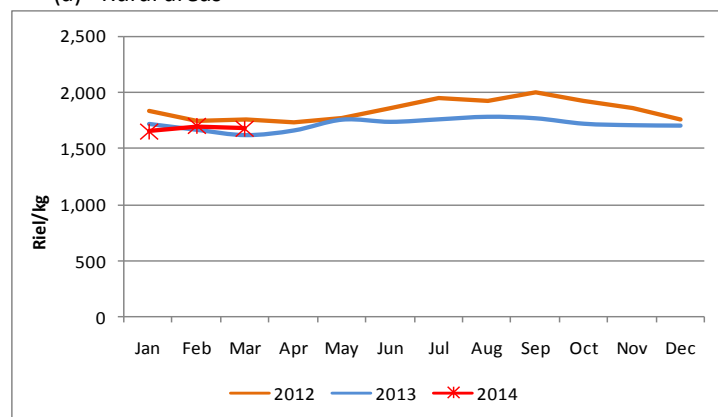
**Figure 4:** Wholesale price of mixed rice, 2012-2014



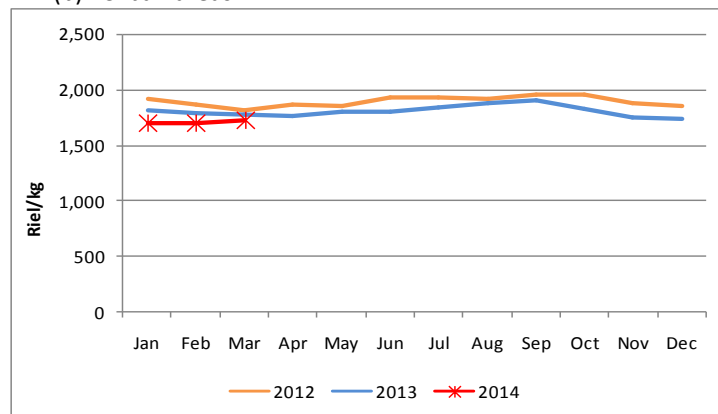
Source: AMO MAFF, <http://www.agriculturalmarketinformation.org.kh>

In March 2014, the average retail price of the lowest quality rice<sup>8</sup> in rural and urban areas was 1,677 riel/kg and 1,726 riel/kg, respectively, decreased 1.3% in rural areas and increased 1.5% in urban areas (Figure 5).

**Figure 5 (a)(b):** Retail price of lowest quality rice, 2012-2014  
(a) Rural areas



(b) Urban areas



Source: WFP

In March 2014, nominal retail rice prices in rural areas increased 3.2% and decreased 2.6% in urban areas on a year-on-year basis. In real terms, retail price of rice in rural and urban areas were 1.1% and 6.9% lower than the same period in the previous year, respectively. Interviewed rice traders in rural areas stated that the upward trend caused by increased demand. In urban areas, downward pressure caused by increased supply from wet and dry season rice harvests.

Retail prices of other food commodities (i.e. second quality rice, vegetable oil, smoked fish, fresh fish, pork, and duck eggs) in each of the 10 rural and 11 urban markets are presented in Appendix 2.

<sup>5</sup>The CPI is collected and reported by the National Institute of Statistics (NIS). Data from March 2014 was not available at the time of publication.

<sup>6</sup>Relative item expenditure weights are derived from the 2004 Cambodia Socio-Economic Survey and adjusted to October-December 2006 price levels.

<sup>7</sup>From provincial markets in Kampong Chhnang, Takeo, Siem Reap, Prey Veng, Phnom Penh, Kampot, Battambang, Banteay Meanchey, and Kampong Cham

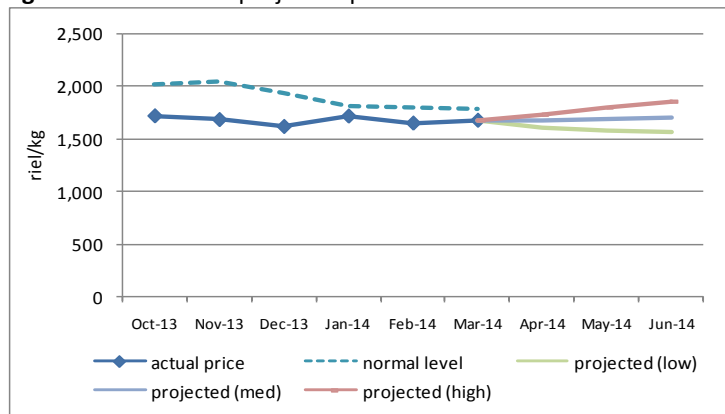
<sup>8</sup>Mixed rice, IR rice and Banla Pdao rice

## Price Monitoring and Forecasting

FAO's price monitoring tool compares recent actual wholesale prices from AMO MAFF with "normal" price levels. The normal price level takes into account historical price levels and adjusts for inflation and seasonal factors. A discrepancy between current actual prices and "normal" prices indicates that current prices are higher or lower than what would be expected. In March 2014, the actual wholesale price of mixed rice was 6.0% lower than the expected normal historical price<sup>9</sup>.

The price monitoring tool also projects prices based on the current price, current inflation rate and seasonal factors. The high and low bands are set so that actual prices will fall within the range 80% of the time. Prices for the next three months (April, May and June) were projected. If prices follow normal seasonal patterns during next three months, the model forecasts that wholesale rice prices are expected to marginally increase in the upcoming quarter (Figure 6).

**Figure 6:** Normal and projected prices of wholesale rice



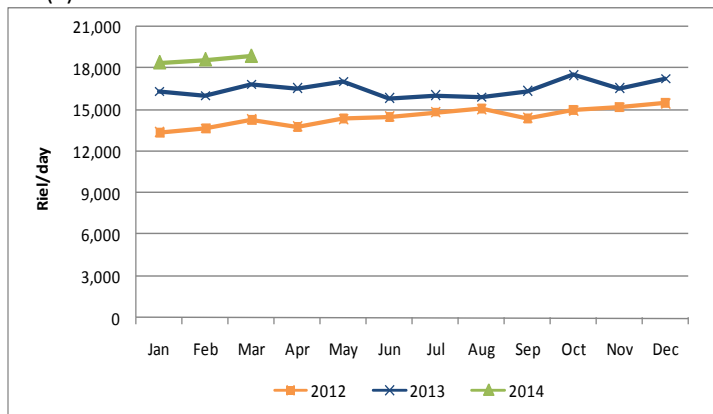
Source: AMO, WFP, FAO

## Unskilled Wage

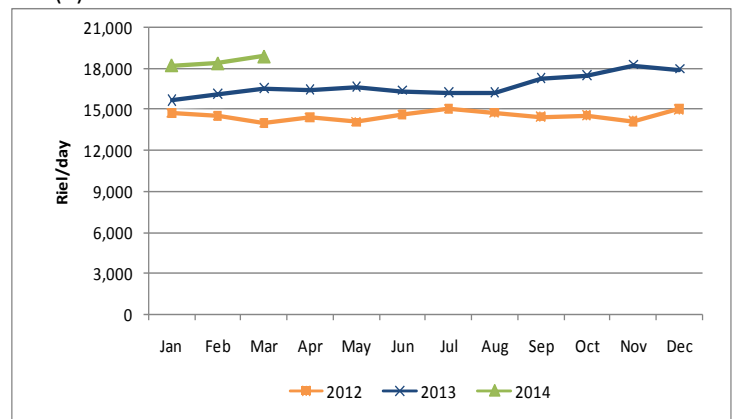
Daily wages of unskilled workers engaged in rice and non-rice farming and construction work are monitored by WFP on a monthly basis. In March 2014, the average wage of unskilled labor was 18,900 riel/day in rural areas and 18,928 riel/day in urban areas, an increase of 1.3% and 2.9% on a month-on-month basis, respectively (Figure 7). In rural areas, unskilled wage increased due to dry season harvest and dry season rice land preparation and planting. In urban areas, the increase in unskilled wages was due to on-going construction works which positively affects demand for unskilled labor in the construction sector.

**Figure 7(a)(b):** Daily wage of unskilled labor

### (a) Rural areas



### (b) Urban areas



Source: WFP

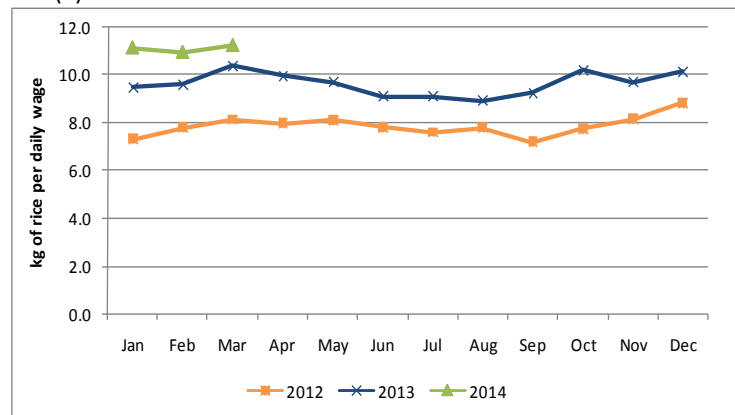
## Terms of Trade

Terms of trade (ToT) is used to assess household purchasing power by taking the ratio of two different components. In this bulletin, the ToT takes the ratio of the daily wage rates of unskilled laborers and the retail price of lowest quality rice in the market. This gives an indication of the amount of rice that an unskilled wage laborer can purchase with a daily wage.

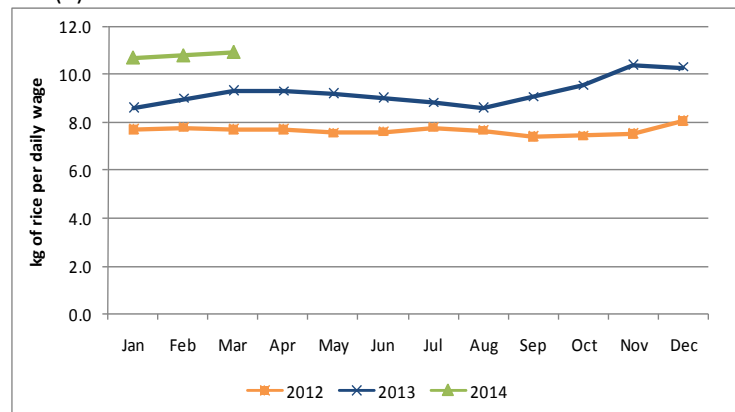
In March 2014, the ToT in rural areas was 11.3 kg/day and 11.0 kg/day in urban areas, a month-on-month increase of 2.7% and 1.4% in rural and urban areas. In rural areas the downward pressure in rice prices and increase in unskilled wage caused households purchasing power to improve. In urban areas, upward trend in unskilled wage outweighed the increase in rice prices causing purchasing power of vulnerable households to improve. (Figure 8).

**Figure 8(a)(b):** Terms of Trade of unskilled labor and rice

### (a) Rural areas



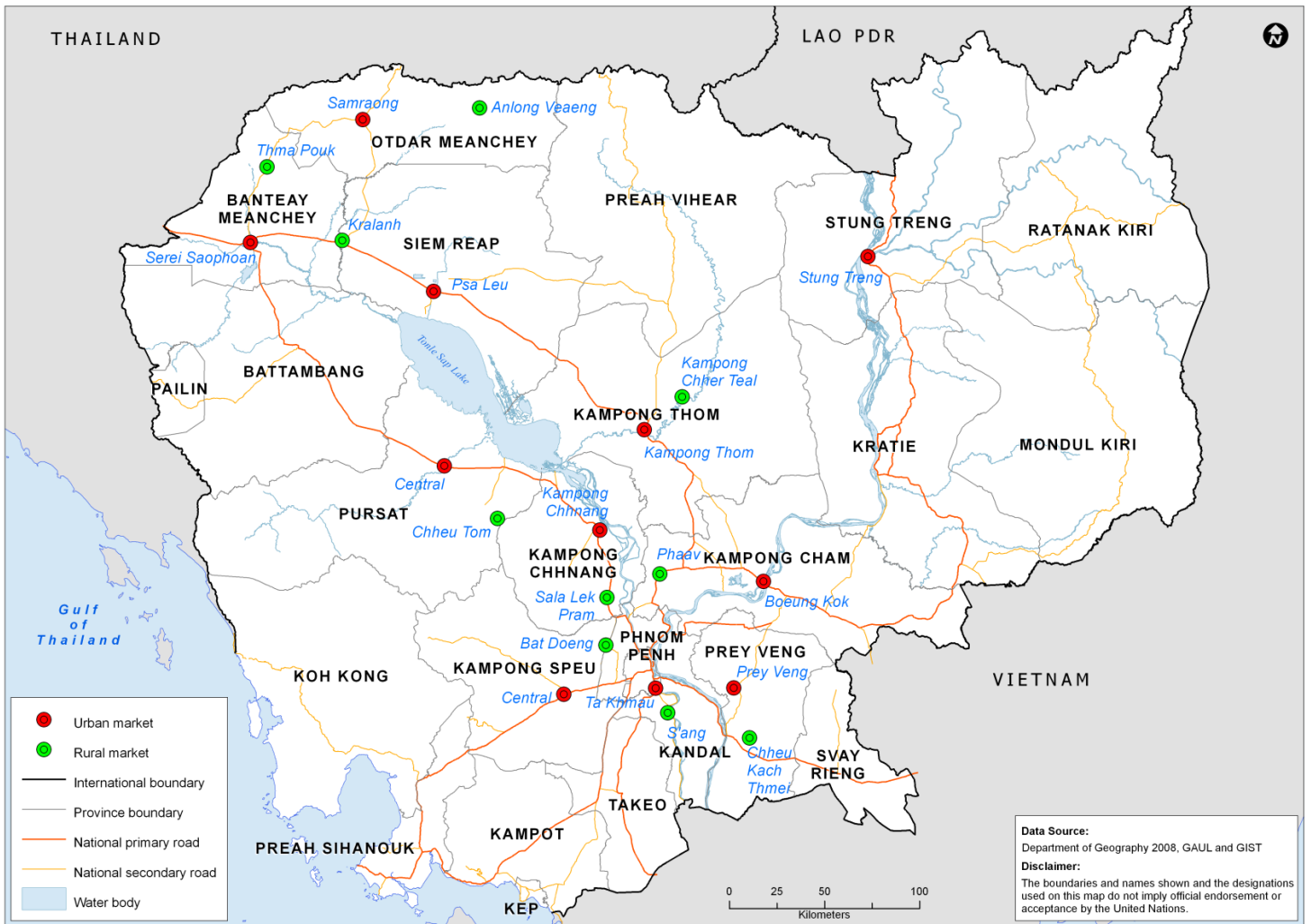
### (b) Urban areas



Source: WFP

<sup>9</sup> 2008 prices are excluded from the FAO price monitoring tool analysis as the food price crisis in mid-2008 distorts the seasonal factors.

**Appendix 1: Location of sentinel market sites in urban and rural areas in Cambodia**



**Contacts**

**Agricultural Marketing Office**

Department of Planning and Statistics, Ministry of Agriculture, Forestry and Fisheries  
 Mr. Meach Yady (meachyady@gmail.com)  
<http://www.agriculturalmarketinformation.org.kh>

**United Nations World Food Programme**

Vulnerability Analysis and Mapping (VAM) Unit  
 Yav Long (Yav.Long@wfp.org)  
 Rukhshona Rajabova (rukhshona.rajabova@wfp.org)  
 Chanvibol Choer (Chanvibol.Choer@wfp.org)  
[www.wfp.org/countries/cambodia](http://www.wfp.org/countries/cambodia)

Appendix 2(a)(b): Retail price of food commodities by market

(a) Rural markets

Food Item	Province	Market	price (Riel/kg)	price change (%)			direction of change		
				1 month	3 months	1 year	1 month	3 months	1 year
Second quality rice	Banteay Meanchey	Thma Puok	-	-	-	-	-	-	-
	Siem Reap	Kralanh	2,467	0.0	0.0	49.5	→	→	↑
	Oddar Meanchey	Anlong Veng	2,200	0.0	-4.3	1.5	→	→	→
	Kampong Cham	Pha'av	1,700	2.0	8.5	-1.0	→	→	→
	Kampong Thom	Kampong Chheuteal	1,700	-5.6	-	-3.8	↓	-	→
	Prey Veng	Chheu Kach Thmei	-	-	-	-	-	-	-
	Kampong Chnang	Sala Lek Pram	1,833	0.0	10.0	4.8	→	→	→
	Kampong Speu	Bat Doeng	-	-	-	-	-	-	-
	Pursat	Chheu Tom	-	-	-	-	-	-	-
	Stung Treng	n/a	-	-	-	-	-	-	-
Kandal	S'ang	1,800	-7.7	-12.2	-21.7	↓	↓	↓	
Lowest quality rice	Banteay Meanchey	Thma Puok	1,800	-5.3	-10.0	-10.0	↓	→	→
	Siem Reap	Kralanh	1,767	-1.9	-1.9	17.8	→	→	↑
	Oddar Meanchey	Anlong Veng	1,633	4.3	2.1	6.5	→	→	→
	Kampong Cham	Pha'av	1,400	-17.6	-9.7	2.2	↓	→	→
	Kampong Thom	Kampong Chheuteal	-	-	-	-	-	-	-
	Prey Veng	Chheu Kach Thmei	1,500	0.0	7.1	0.0	→	→	→
	Kampong Chnang	Sala Lek Pram	1,767	1.9	12.8	7.1	→	↑	→
	Kampong Speu	Bat Doeng	2,000	0.0	-	-	→	-	-
	Pursat	Chheu Tom	1,633	8.9	8.9	-6.7	↑	→	→
	Stung Treng	n/a	-	-	-	-	-	-	-
Kandal	S'ang	1,600	-5.9	-11.1	-5.9	↓	↓	→	
Vegetable oil	Banteay Meanchey	Thma Puok	6,410	6.1	-2.8	2.9	↑	→	→
	Siem Reap	Kralanh	5,500	3.1	3.1	0.1	→	→	→
	Oddar Meanchey	Anlong Veng	6,410	0.0	6.1	16.5	→	→	↑
	Kampong Cham	Pha'av	5,067	1.3	1.3	10.9	→	→	→
	Kampong Thom	Kampong Chheuteal	5,500	0.0	-2.9	10.0	→	→	→
	Prey Veng	Chheu Kach Thmei	5,000	0.0	0.0	0.0	→	→	→
	Kampong Chnang	Sala Lek Pram	5,500	-15.8	-1.8	8.6	↓	→	→
	Kampong Speu	Bat Doeng	5,100	2.0	2.0	2.0	→	→	→
	Pursat	Chheu Tom	5,533	1.2	3.1	8.5	→	→	→
	Stung Treng	n/a	-	-	-	-	-	-	-
Kandal	S'ang	5,287	0.4	1.7	11.3	→	→	→	
Smoked fish	Banteay Meanchey	Thma Puok	-	-	-	-	-	-	-
	Siem Reap	Kralanh	-	-	-	-	-	-	-
	Oddar Meanchey	Anlong Veng	-	-	-	-	-	-	-
	Kampong Cham	Pha'av	18,350	24.4	52.9	1.9	↑	↑	→
	Kampong Thom	Kampong Chheuteal	18,000	12.5	12.5	10.8	↑	↑	→
	Prey Veng	Chheu Kach Thmei	-	-	-	-	-	-	-
	Kampong Chnang	Sala Lek Pram	13,000	4.0	-23.5	-	→	↓	-
	Kampong Speu	Bat Doeng	25,300	5.4	54.9	-	↑	↑	-
	Pursat	Chheu Tom	-	-	-	-	-	-	-
	Stung Treng	n/a	-	-	-	-	-	-	-
Kandal	S'ang	-	-	-	-	-	-	-	

Food Item	Province	Market	price (Riel/kg)	price change (%)			direction of change		
				1 month	3 months	1 year	1 month	3 months	1 year
Fresh fish	Banteay Meanchey	Thma Puok	6,000	-	-	-	-	-	-
	Siem Reap	Kralanh	5,167	0.0	0.0	6.9	→	→	→
	Oddar Meanchey	Anlong Veng	5,000	3.4	11.1	3.4	→	↑	→
	Kampong Cham	Pha'av	6,000	-5.3	0.0	16.1	↓	→	↑
	Kampong Thom	Kampong Chheuteal	8,000	0.0	-	0.0	→	-	→
	Prey Veng	Chheu Kach Thmei	4,667	-	-	3.7	-	-	→
	Kampong Chnang	Sala Lek Pram	6,500	11.4	11.4	-	↑	↑	-
	Kampong Speu	Bat Doeng	6,000	0.0	0.0	9.1	→	→	→
	Pursat	Chheu Tom	6,000	0.0	0.0	14.3	→	→	→
	Stung Treng	n/a	-	-	-	-	-	-	-
Kandal	S'ang	6,000	4.3	-	4.3	→	-	→	
Pork with fat	Banteay Meanchey	Thma Puok	16,000	6.7	6.7	14.3	↑	→	→
	Siem Reap	Kralanh	13,000	8.3	8.3	8.3	↑	→	→
	Oddar Meanchey	Anlong Veng	12,333	-7.5	0.0	37.0	↓	→	↑
	Kampong Cham	Pha'av	14,000	0.0	0.0	7.7	→	→	→
	Kampong Thom	Kampong Chheuteal	14,000	0.0	5.0	16.7	→	→	↑
	Prey Veng	Chheu Kach Thmei	14,000	0.0	7.7	7.7	→	→	→
	Kampong Chnang	Sala Lek Pram	14,000	-2.3	2.4	13.5	→	→	→
	Kampong Speu	Bat Doeng	14,333	2.4	2.4	4.9	→	→	→
	Pursat	Chheu Tom	15,000	0.0	0.0	13.9	→	→	→
	Stung Treng	n/a	-	-	-	-	-	-	-
Kandal	S'ang	15,667	0.0	-7.8	9.3	→	→	→	
Duck egg	Banteay Meanchey	Thma Puok	600	-2.7	-14.3	0.0	→	↓	→
	Siem Reap	Kralanh	617	0.0	0.0	14.2	→	→	→
	Oddar Meanchey	Anlong Veng	567	0.0	-8.1	-5.6	→	→	→
	Kampong Cham	Pha'av	517	0.0	3.3	-13.9	→	→	-
	Kampong Thom	Kampong Chheuteal	500	0.0	-6.3	-	→	→	-
	Prey Veng	Chheu Kach Thmei	500	0.0	4.2	0.0	→	→	→
	Kampong Chnang	Sala Lek Pram	500	3.4	-1.3	-10.2	→	→	→
	Kampong Speu	Bat Doeng	500	-	-9.1	-9.1	-	→	→
	Pursat	Chheu Tom	490	-2.0	1.4	1.4	→	→	→
	Stung Treng	n/a	-	-	-	-	-	-	-
Kandal	S'ang	500	1.4	-9.1	-8.5	→	→	→	

- ↑ Price increase above normal fluctuation
  - Normal price fluctuation
  - ↓ Price decrease below normal fluctuation
  - Commodity not available in reporting month
- Price fluctuation is considered normal if change within:  
5% for month, 10% for 3 months, 15% for 1 year



(c) Urban markets

Food Item	Province	Market	price (Riel/kg)	price change (%)			direction of change		
				1 month	3 months	1 year	1 month	3 months	1 year
Second quality rice	Banteay Meanchey	Serei Saophoan	2,500	0.0	4.2	19.0	↔	↔	↕
	Siem Reap	Psa Leu	2,300	0.0	0.0	30.2	↔	↔	↕
	Oddar Meanchey	Samraong	-	-	-	-	-	-	-
	Kampong Cham	Boeung Kok	2,150	43.3	13.2	0.0	↕	↕	↔
	Kampong Thom	Central	1,750	-2.8	-0.9	-2.8	↔	↔	↔
	Prey Veng	Central	-	-	-	-	-	-	-
	Kampong Chhnang	Central	1,800	1.9	1.9	3.8	↔	↔	↔
	Kampong Speu	Central	1,800	-5.3	3.8	-11.5	↘	↔	↔
	Pursat	Central	1,967	-3.3	-1.7	0.0	↔	↔	↔
	Stung Treng	Stung Treng	-	-	-	-	-	-	-
Kandal	Ta Khmao	2,000	0.0	-	-9.1	↔	-	↔	
Lowest quality rice	Banteay Meanchey	Serei Saophoan	2,000	0.0	0.0	3.4	↔	↔	↔
	Siem Reap	Psa Leu	1,767	8.2	10.4	8.2	↕	↕	↔
	Oddar Meanchey	Samraong	2,000	7.1	3.4	1.7	↕	↔	↔
	Kampong Cham	Boeung Kok	1,400	-7.7	-	1.7	↘	-	↔
	Kampong Thom	Central	1,550	-3.1	-3.1	-3.1	↔	↔	↔
	Prey Veng	Central	1,700	6.3	6.3	-5.6	↕	↔	↘
	Kampong Chhnang	Central	1,633	0.0	0.0	-	↔	↔	-
	Kampong Speu	Central	1,700	0.0	6.3	-10.5	↔	↔	↘
	Pursat	Central	1,667	6.4	1.0	-4.8	↕	↔	↘
	Stung Treng	Stung Treng	-	-	-	-	-	-	-
Kandal	Ta Khmao	1,850	2.8	-	-7.5	↔	-	↘	
Vegetable oil	Banteay Meanchey	Serei Saophoan	6,043	-8.3	0.7	10.0	↘	↔	↔
	Siem Reap	Psa Leu	5,861	7.3	8.7	17.2	↕	↔	↕
	Oddar Meanchey	Samraong	6,043	0.0	0.0	-7.0	↔	↔	↘
	Kampong Cham	Boeung Kok	5,167	-4.3	-4.3	6.2	↔	↔	↔
	Kampong Thom	Central	5,167	-6.1	-6.3	0.0	↘	↔	↔
	Prey Veng	Central	5,167	-8.8	-8.8	-6.1	↘	↔	↔
	Kampong Chhnang	Central	5,000	1.4	-3.8	6.4	↔	↔	↔
	Kampong Speu	Central	5,167	0.0	1.3	5.4	↔	↔	↔
	Pursat	Central	5,350	-2.1	-5.6	5.6	↔	↔	↔
	Stung Treng	Stung Treng	-	-	-	-	-	-	-
Kandal	Ta Khmao	5,650	2.7	3.4	13.0	↔	↔	↔	
Smoked fish	Banteay Meanchey	Serei Saophoan	-	-	-	-	-	-	-
	Siem Reap	Psa Leu	-	-	-	-	-	-	-
	Oddar Meanchey	Samraong	-	-	-	-	-	-	-
	Kampong Cham	Boeung Kok	24,950	23.7	20.0	24.8	↕	↕	↕
	Kampong Thom	Central	21,000	29.2	-15.7	-18.5	↕	↘	↘
	Prey Veng	Central	-	-	-	-	-	-	-
	Kampong Chhnang	Central	30,000	42.9	76.5	-	↕	↕	-
	Kampong Speu	Central	24,000	-5.3	2.6	20.0	↘	↔	↕
	Pursat	Central	-	-	-	-	-	-	-
	Stung Treng	Stung Treng	-	-	-	-	-	-	-
Kandal	Ta Khmao	-	-	-	-	-	-	-	

Food Item	Province	Market	price (Riel/kg)	price change (%)			direction of change		
				1 month	3 months	1 year	1 month	3 months	1 year
Fresh fish	Banteay Meanchey	Serei Saophoan	6,000	-	-	-14.3	-	-	↔
	Siem Reap	Psa Leu	5,833	16.7	16.7	-	↕	↕	-
	Oddar Meanchey	Samraong	5,000	0.0	-4.8	6.4	↔	↔	↔
	Kampong Cham	Boeung Kok	6,667	10.5	-16.7	23.5	↕	↘	↕
	Kampong Thom	Central	6,500	-	-	8.3	-	-	↔
	Prey Veng	Central	5,000	-9.1	-13.0	0.0	↘	↘	↔
	Kampong Chhnang	Central	6,833	-	5.1	20.6	-	↔	↕
	Kampong Speu	Central	-	-	-	-	-	-	-
	Pursat	Central	-	-	-	-	-	-	-
	Stung Treng	Stung Treng	-	-	-	-	-	-	-
Kandal	Ta Khmao	-	-	-	-	-	-	-	
Pork with fat	Banteay Meanchey	Serei Saophoan	15,667	0.0	4.4	9.3	↔	↔	↔
	Siem Reap	Psa Leu	13,833	1.2	6.4	12.2	↔	↔	↔
	Oddar Meanchey	Samraong	15,000	0.0	0.0	4.7	↔	↔	↔
	Kampong Cham	Boeung Kok	16,833	1.0	-1.0	17.4	↔	↔	↕
	Kampong Thom	Central	14,000	7.7	7.7	27.3	↕	↔	↕
	Prey Veng	Central	15,667	4.4	4.4	9.3	↔	↔	↔
	Kampong Chhnang	Central	16,000	-2.0	4.3	23.1	↔	↔	↕
	Kampong Speu	Central	15,000	0.0	4.7	9.8	↔	↔	↔
	Pursat	Central	16,000	6.7	14.3	23.1	↕	↕	↕
	Stung Treng	Stung Treng	-	-	-	-	-	-	-
Kandal	Ta Khmao	17,000	-1.9	-3.8	13.3	↔	↔	↔	
Duck egg	Banteay Meanchey	Serei Saophoan	517	-3.1	-3.1	0.0	↔	↔	↔
	Siem Reap	Psa Leu	537	-0.6	-1.2	7.3	↔	↔	↔
	Oddar Meanchey	Samraong	567	3.0	-5.6	-2.9	↔	↔	↔
	Kampong Cham	Boeung Kok	483	-2.7	-6.5	-12.1	↔	↔	↔
	Kampong Thom	Central	517	-	-6.1	-	-	↔	-
	Prey Veng	Central	500	-	3.4	0.0	-	↔	↔
	Kampong Chhnang	Central	473	-4.1	-5.3	-13.9	↔	↔	↔
	Kampong Speu	Central	500	-9.1	-9.1	-6.3	↘	↔	↔
	Pursat	Central	460	-6.8	-4.8	-8.0	↘	↔	↔
	Stung Treng	Stung Treng	-	-	-	-	-	-	-
Kandal	Ta Khmao	507	-3.2	-5.0	-7.3	↔	↔	↔	

- ↕ Price increase above normal fluctuation
  - ↔ Normal price fluctuation
  - ↘ Price decrease below normal fluctuation
  - Commodity not available in reporting month
- Price fluctuation is considered normal if change within:  
5% for month, 10% for 3 months, 15% for 1 year