



ព្រឹត្តិបត្រថ្លៃអាហារ និងប្រាក់ឈ្នួលពលកម្មនៅកម្ពុជា



CAMBODIA FOOD PRICE AND WAGE BULLETIN

Agricultural Marketing
Office, DPS, MAFF

November 2014, Issue 69



HIGHLIGHTS

- Food purchasing power of households increased by 7.3% and 5.3% month-on-month in rural and urban areas, respectively.
- Retail price of lowest quality rice decreased by 0.8% in rural areas and increased by 0.1% in urban areas on a month-on-month basis.
- Wholesale price of mixed rice decreased by 2.9% month-on-month and 1.7% year-on-year.
- In October, inflation rate was 2.9 %, and overall food prices increased by 3.5% year-on-year.
- Vietnamese and Thai A1 Super white rice decreased by 6.0% and 2.0%, respectively month-on-month and
- International Food Price Index decreased 0.1% on a month-on-month.

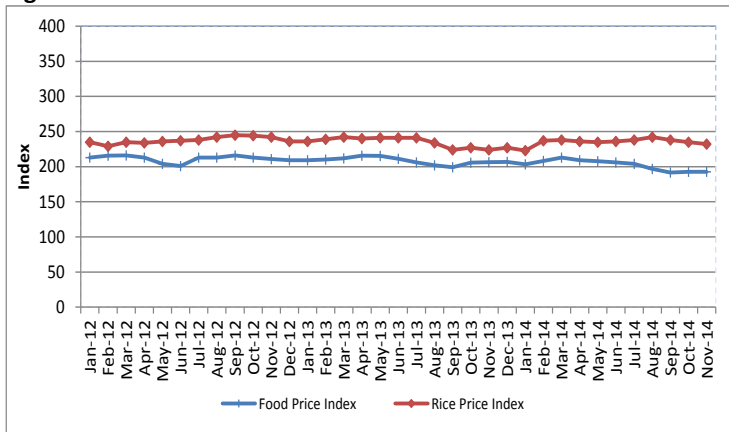
Overview

This Bulletin is a joint publication¹ by the Agricultural Marketing Office (Department of Planning and Statistics) of the Ministry of Agriculture, Forestry and Fisheries (AMO MAFF) and the United Nations World Food Programme (WFP). It monitors the price of food commodities as well as wage rates for unskilled labor on a monthly basis. It also aims to detect changes and identify trends in the food purchasing power of vulnerable households.

International Food and Rice Prices

The FAO Food Price Index² measures the international price level of a basket of key food commodities. The index averaged 192.6 points in November 2014, a slight decrease of 0.1% on a month-on-month basis due mainly to a decline in prices of dairy and sugar. The International Rice Price Index averaged 232 points, a decrease of 1.3% on a month-on-month basis.

Figure 1: FAO Food Price Index and Rice Price Index



Source: <http://www.fao.org/worldfoodsituation/foodpricesindex/en/>

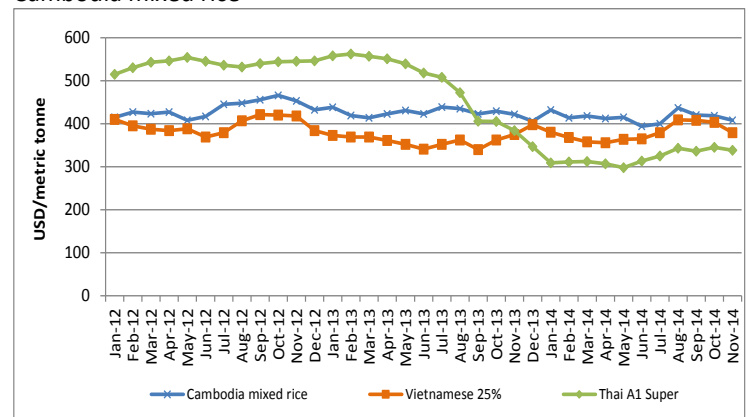
CONTENT

Overview.....	1
International Food and Rice Prices.....	1
Regional Rice Wholesale Prices.....	1
Cambodia Consumer Price Index (CPI).....	2
Local Food Commodity Prices.....	2
Price Monitoring and Forecasting.....	3
Unskilled Wage.....	3
Terms of Trade.....	3
Appendix 1: Sentinel Surveillance Market Sites.....	4
Appendix 2: Retail Price of Food Commodities by Market.....	5

Regional Rice Wholesale Prices

In November 2014, the f.o.b. prices³ of Thai A1 Super white rice were 338 USD/mt and Vietnamese white rice (25% broken) were 379 USD/mt respectively (Figure 2).

Figure 2: Export price of Thai and Vietnamese white rice and Cambodia mixed rice⁴



Source: <http://www.fao.org/es/esc/prices/PricesServlet.jsp?lang=en>

¹ This publication has been produced jointly since September 2011.

² The FAO Food Price Index consists of the average of commodity group price indices (i.e. meat, dairy, cereals, oils/fats, and sugar) weighted with the average export shares of each of the groups for 2002-2004.

³ Free on board (f.o.b.) price includes all charges up to the placing of goods on board a ship at the port of departure specified by the buyer.

⁴ Mixed rice is considered a low-quality type of rice. The price in US\$ per metric tonne above was converted from the price in Riel per Kg.

The export price of Thai A1 Super white rice decreased 2.0% month-on-month and decreased 12.0% year-on-year. The price of Vietnamese white rice decreased by 6.0% month-on-month, but increased by 1.1% on a year-on-year basis. The decline in regional rice prices in this month reflect a slowdown in demand and the arrival of harvested crops on the market.

The price of Cambodian mixed rice in November was estimated at 407.7 USD/mt, decreases of 2.6% month-on-month following the trend of regional prices.

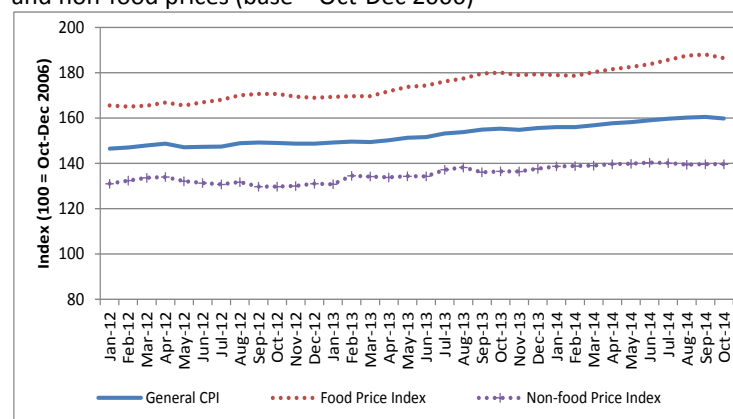
Cambodia Consumer Price Index (CPI)

The general Consumer Price Index (CPI)⁵ measures the cost of a consumption basket composed of 259 items. Each item is weighted based on their importance in an average household's expenditure⁶.

In October⁷ 2014, the general CPI averaged 159.8 points, decreased 0.4% month-on-month. The inflation rate, as measured by the year-on-year increase in the CPI, was 2.9%. Food Price Index (FPI) measures the cost of the food items (comprise 43.2%) in the general CPI's consumption basket, was the main factor contributed to the increase in CPI. In October 2014, the FPI was 186.5 point, 0.9% lower than previous month but 3.5% higher than the same period last year (Figure 3). Food prices depend partly on gasoline prices through its contribution to its transportation cost. In October, even though the gasoline prices remained stable month-on-month, but it increased by 2.6% on a year-on-year basis.

Non-food prices averaged 139.6 points, remained stable month-on-month but increased 2.3% year-on-year.

Figure 3: Relative change in general consumer prices, food prices and non-food prices (base = Oct-Dec 2006)

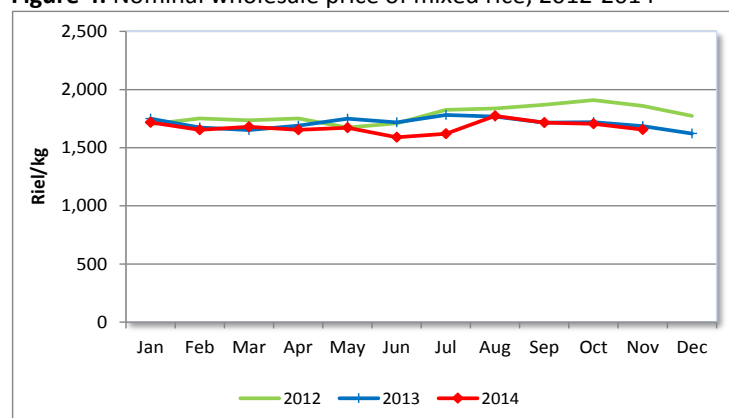


Source: National Institute of Statistics

Local Food Commodity Prices

Average wholesale price of mixed rice⁸ was 1,656.4 riel/kg in November 2014, a month-on-month decrease of 2.9%. In nominal terms, prices decreased by 1.7% on a year-on-year basis (Figure 4). In real terms, the wholesale price of mixed rice was 4.6% lower year-on-year.

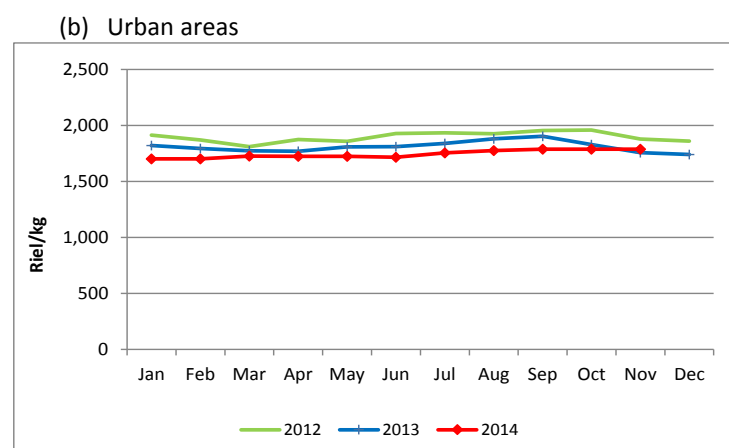
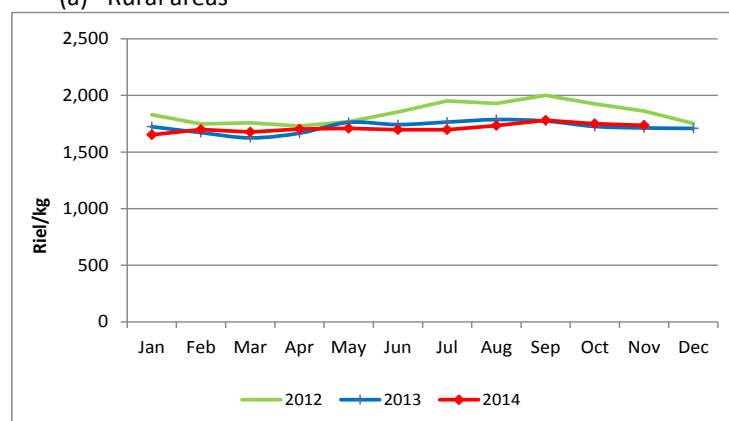
Figure 4: Nominal wholesale price of mixed rice, 2012-2014



Source: AMO MAFF, <http://www.agriculturalmarketinformation.org.kh>

In November 2014, the average retail price of the lowest quality rice⁹ in rural and urban areas was 1,736.7 riel/kg and 1,787.9 riel/kg, respectively. The prices decreased by 0.8% in rural areas, while the prices in urban areas increased by 0.1% month-on-month (Figure 5).

Figure 5 (a)(b): Nominal retail price of lowest quality rice, 2012-14



Source: WFP

On a year-on-year basis, in November 2014, nominal retail rice prices increased by 1.4% and 1.8 % in rural and urban areas, respectively. In real terms, the retail price of rice in rural and urban areas was 1.5 % and 1.1% lower than the same period in the previous year, respectively.

Retail prices of other food commodities (i.e. second quality rice, vegetable oil, smoked fish, fresh fish, pork, and duck eggs) in each of the 10 rural and 11 urban markets are presented in Appendix 2.

⁵ The CPI is collected and reported by the National Institute of Statistics (NIS).

⁶ Relative item expenditure weights are derived from the 2004 Cambodia Socio-Economic Survey and adjusted to October-December 2006 price levels.

⁷ November CPI values are not yet available at the time of producing this bulletin

⁸ The wholesale price of mixed rice is collected and reported by the Agricultural Marketing Office of the Ministry of Agriculture, Forestry and Fisheries.

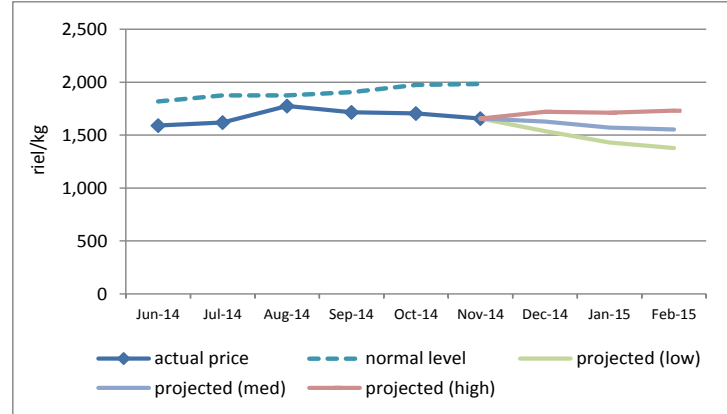
⁹ Mixed rice, IR rice and Banla Pdao rice

Price Monitoring and Forecasting

FAO's price monitoring tool compares recent actual wholesale prices from AMO MAFF with "normal" price levels. The normal price level takes into account historical price levels and adjusts for inflation and seasonal factors. A discrepancy between current actual prices and "normal" prices indicates that current prices are higher or lower than what would be expected. In November 2014, the actual wholesale price of mixed rice was 1,656.4 riel/kg, 16.50% lower than the expected normal historical price.

Prices for the next three months were also projected, based on the current price, current inflation rate and seasonal factors. The high and low bands are also set so that actual prices will fall within the range 80% of the time. The prices were projected to decrease in December, January and February (Figure 6).

Figure 6: Normal and projected prices of wholesale rice



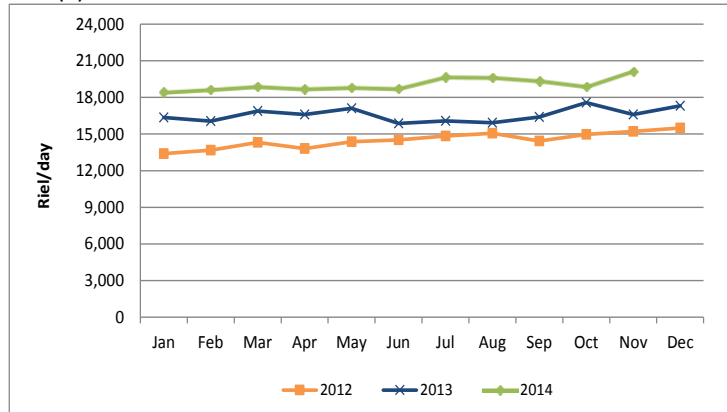
Source: AMO, WFP, FAO

Unskilled Wage

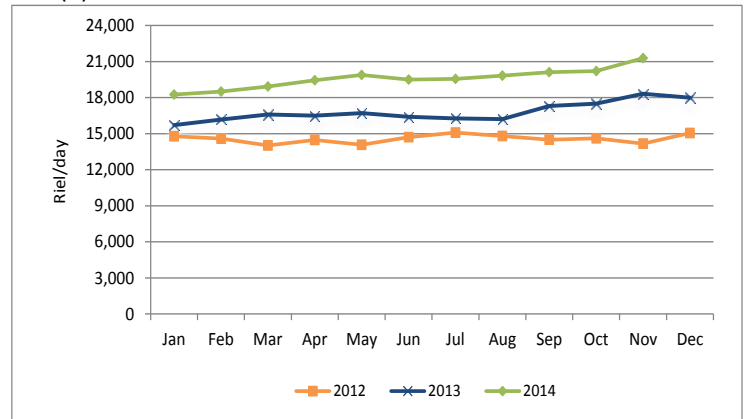
Daily wages of unskilled workers engaged in rice and non-rice farming and construction work are monitored by WFP on a monthly basis. In November 2014, the average wage of unskilled labor in rural and urban areas was 20,125 riel/day and 21,278 riel/day, respectively. The wage rate in rural and urban areas increased by 6.5% and 5.3% on a month-on-month basis, respectively (Figure 7).

Figure 7(a)(b): Daily wage of unskilled labor

(a) Rural areas



(b) Urban areas



Source: WFP

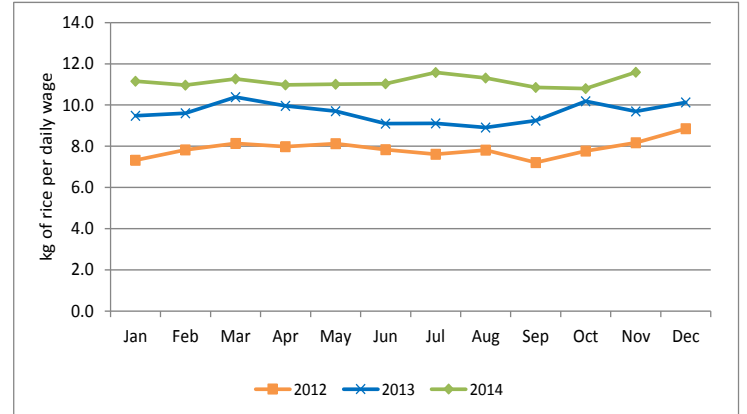
Terms of Trade

Terms of trade (ToT) is used to assess household purchasing power by taking the ratio of two different components, namely the daily wage rates of unskilled laborers and the retail price of lowest quality rice in the market. This gives an indication of the amount of rice that an unskilled wage laborer can purchase with a daily wage.

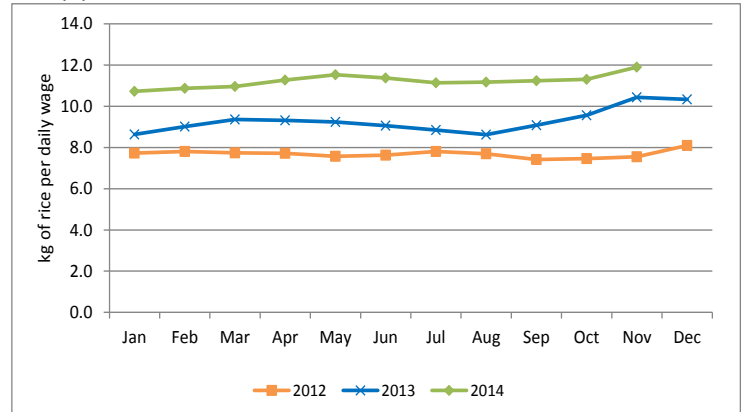
In November 2014, the ToT was 11.6 kg/day and 11.9kg/day in rural and urban areas, respectively. The ToT in rural and urban areas increased by 7.3% and 5.3% on a month-on-month basis, respectively (Figure 8). In rural area, the increase in ToT was due to increases in unskilled wage rate and decreases in retail price of rice. Moreover, the increase in ToT in urban areas was due to an increase in unskilled wage which outpaced an increase in retail price of rice, caused purchasing power to increase (Figure 8).

Figure 8(a)(b): Terms of Trade of unskilled labor and rice

(a) Rural areas

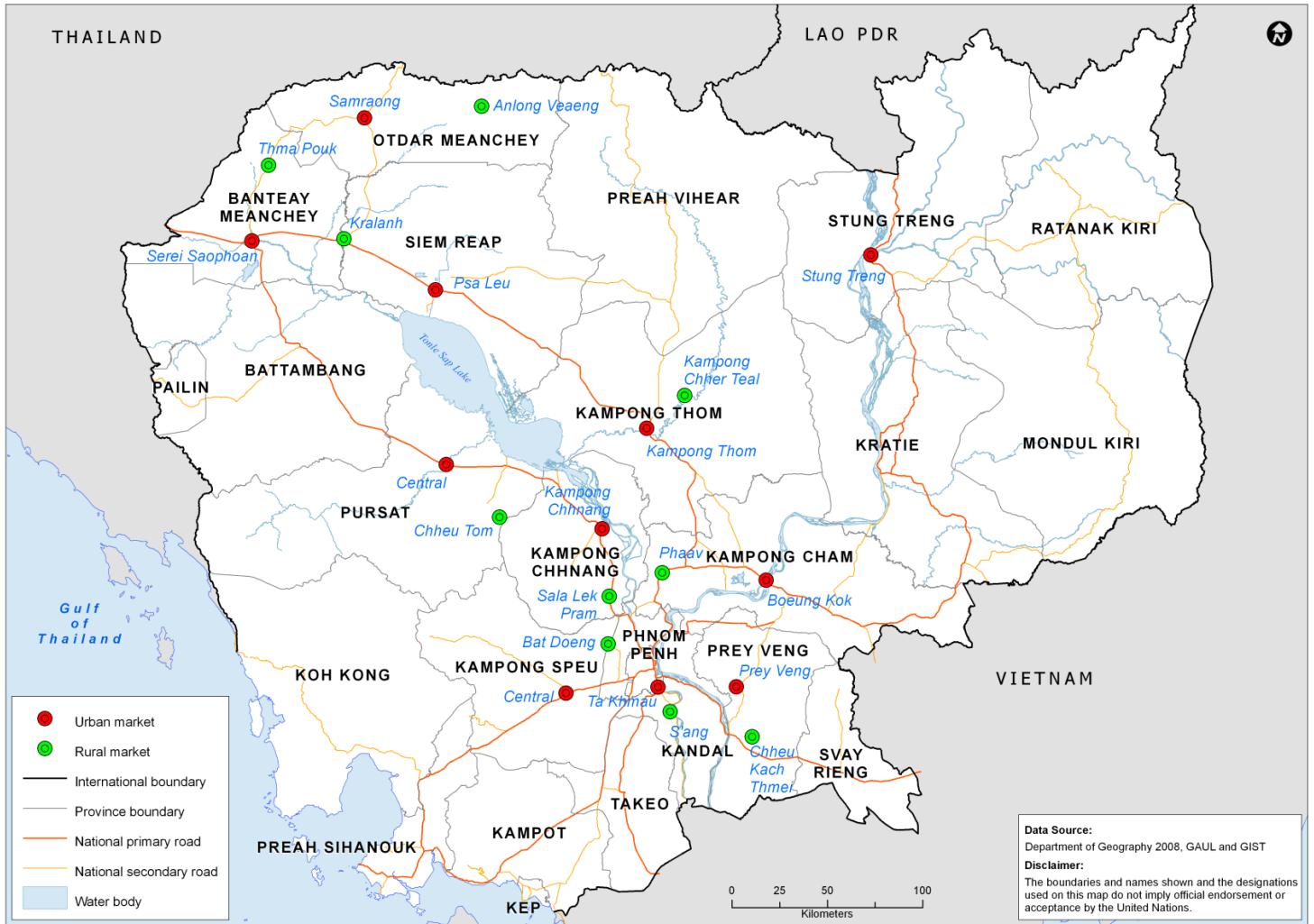


(b) Urban areas



Source: WFP

Appendix 1: Location of sentinel market sites in urban and rural areas in Cambodia



Contacts

Agricultural Marketing Office

Department of Planning and Statistics, Ministry of Agriculture, Forestry and Fisheries
 Mr. Meach Yady: meachyady@gmail.com
<http://www.agriculturalmarketinformation.org.kh>

United Nations World Food Programme

Vulnerability Analysis and Mapping (VAM) Unit
 Mr. Jonathan Rivers: jonathan.rivers@wfp.org
 Mr. Yav Long: Yav.Long@wfp.org
 Mr. Chanvibol Choer: Chanvibol.Choeur@wfp.org
<http://www.wfp.org/countries/cambodia>

Appendix 2(a)(b): Retail price of food commodities by market

(a) Rural markets

Food Item	Province	Market	price (Riel/kg)	price change (%)			direction of change		
				1 month	3 months	1 year	1 month	3 months	1 year
Second quality rice	Banteay Meanchey	Thma Puok	-	-	-	-	-	-	-
	Kampong Cham	Pha'av	1,700	-5.6	-1.9	-1.9	↓	→	→
	Kampong Chhnang	Sala Lek Pram	1,933	-3.3	7.4	3.6	→	→	→
	Kampong Speu	Bat Doeng	2,150	7.5	7.5	-	↑	→	-
	Kampong Thum	Kampong Chheuteal	1,800	0.0	-5.3	1.9	→	→	→
	Kandal	S'ang	1,967	0.0	-1.7	-1.7	→	→	→
	Oddar Meanchey	Anlong Veng	2,200	2.3	0.0	2.3	→	→	→
	Prey Veng	Chheu Kach Thmei	-	-	-	-	-	-	-
	Pursat	Chheu Tom	-	-	-	-	-	-	-
	Siem Reap	Kralanh	2,500	0.0	8.7	-	→	→	-
Stung Treng	n/a	-	-	-	-	-	-	-	
Svay Rieng	Kampong Trach	-	-	-	-	-	-	-	
Lowest quality rice	Banteay Meanchey	Thma Puok	2,000	0.0	0.0	0.0	→	→	→
	Kampong Cham	Pha'av	1,600	-5.9	6.7	6.7	↓	→	→
	Kampong Chhnang	Sala Lek Pram	1,800	-1.8	0.0	3.8	→	→	→
	Kampong Speu	Bat Doeng	1,800	0.0	0.0	-10.0	→	→	→
	Kampong Thum	Kampong Chheuteal	1,600	0.0	-5.9	-	→	→	-
	Kandal	S'ang	1,767	-1.9	-1.9	-1.9	→	→	→
	Oddar Meanchey	Anlong Veng	1,650	-6.6	-2.9	-13.2	↓	→	→
	Prey Veng	Chheu Kach Thmei	1,567	0.0	-2.1	2.2	→	→	→
	Pursat	Chheu Tom	1,850	8.8	8.8	19.4	↑	→	↑
	Siem Reap	Kralanh	1,733	0.0	0.0	23.8	→	→	↑
Stung Treng	n/a	-	-	-	-	-	-	-	
Svay Rieng	Kampong Trach	-	-	-	-	-	-	-	
Vegetable oil	Banteay Meanchey	Thma Puok	5,500	0.0	0.0	0.1	→	→	→
	Kampong Cham	Pha'av	5,000	0.0	-1.3	0.0	→	→	→
	Kampong Chhnang	Sala Lek Pram	5,000	0.0	0.0	-18.5	→	→	↓
	Kampong Speu	Bat Doeng	5,000	0.0	0.0	-10.2	→	→	→
	Kampong Thum	Kampong Chheuteal	5,000	0.0	-1.3	-6.2	→	→	→
	Kandal	S'ang	4,700	-7.2	-4.7	-19.0	↓	→	↓
	Oddar Meanchey	Anlong Veng	5,494	-3.2	-6.2	-0.1	→	→	→
	Prey Veng	Chheu Kach Thmei	4,867	-1.4	-2.7	-14.1	→	→	→
	Pursat	Chheu Tom	4,833	-3.3	-3.3	-17.6	→	→	↓
	Siem Reap	Kralanh	5,500	0.0	0.0	5.9	→	→	→
Stung Treng	n/a	-	-	-	-	-	-	-	
Svay Rieng	Kampong Trach	-	-	-	-	-	-	-	
Smoked fish (Trei Riel)	Banteay Meanchey	Thma Puok	35,000	0.0	0.0	-	→	→	-
	Kampong Cham	Pha'av	-	-	-	-	-	-	-
	Kampong Chhnang	Sala Lek Pram	20,000	-	-	0.0	-	-	→
	Kampong Speu	Bat Doeng	24,000	-31.4	-32.4	20.0	↓	↓	↑
	Kampong Thum	Kampong Chheuteal	24,000	-	-	27.3	-	-	↑
	Kandal	S'ang	28,000	-	-	-	-	-	-
	Oddar Meanchey	Anlong Veng	-	-	-	-	-	-	-
	Prey Veng	Chheu Kach Thmei	-	-	-	-	-	-	-
	Pursat	Chheu Tom	-	-	-	-	-	-	-
	Siem Reap	Kralanh	-	-	-	-	-	-	-
Stung Treng	n/a	-	-	-	-	-	-	-	
Svay Rieng	Kampong Trach	-	-	-	-	-	-	-	

Food Item	Province	Market	price (Riel/kg)	price change (%)			direction of change		
				1 month	3 months	1 year	1 month	3 months	1 year
Fresh fish (Trei Pra)	Banteay Meanchey	Thma Puok	6,000	0.0	0.0	-	→	→	-
	Kampong Cham	Pha'av	-	-	-	-	-	-	-
	Kampong Chhnang	Sala Lek Pram	6,000	2.9	9.1	9.1	→	→	→
	Kampong Speu	Bat Doeng	6,000	0.0	5.9	13.2	→	→	→
	Kampong Thum	Kampong Chheuteal	-	-	-	-	-	-	-
	Kandal	S'ang	6,500	-	8.3	18.2	-	→	↑
	Oddar Meanchey	Anlong Veng	5,000	0.0	0.0	0.0	→	→	→
	Prey Veng	Chheu Kach Thmei	5,500	-8.3	3.1	-	↓	→	-
	Pursat	Chheu Tom	7,000	0.0	2.4	-	→	→	-
	Siem Reap	Kralanh	-	-	-	-	-	-	-
Stung Treng	n/a	-	-	-	-	-	-	-	
Svay Rieng	Kampong Trach	-	-	-	-	-	-	-	
Pork with fat (Sach Bei Chloan)	Banteay Meanchey	Thma Puok	17,000	0.0	0.0	13.3	→	→	→
	Kampong Cham	Pha'av	15,000	-6.3	-15.1	7.1	↓	↓	→
	Kampong Chhnang	Sala Lek Pram	15,000	-2.2	7.1	21.6	→	→	↑
	Kampong Speu	Bat Doeng	14,000	-12.5	-12.5	7.7	↓	↓	→
	Kampong Thum	Kampong Chheuteal	14,000	0.0	-8.7	16.7	→	→	↑
	Kandal	S'ang	15,333	-6.1	-9.8	2.2	↓	→	→
	Oddar Meanchey	Anlong Veng	13,333	2.6	2.6	17.6	→	→	↑
	Prey Veng	Chheu Kach Thmei	14,333	-3.4	-4.4	19.4	→	→	↑
	Pursat	Chheu Tom	17,000	0.0	0.0	21.4	→	→	↑
	Siem Reap	Kralanh	13,000	0.0	0.0	8.3	→	→	→
Stung Treng	n/a	-	-	-	-	-	-	-	
Svay Rieng	Kampong Trach	-	-	-	-	-	-	-	
Duck egg	Banteay Meanchey	Thma Puok	500	0.0	-16.7	-28.6	→	↓	↓
	Kampong Cham	Pha'av	500	20.0	11.1	-10.2	↑	↑	→
	Kampong Chhnang	Sala Lek Pram	500	0.0	0.0	-14.8	→	→	→
	Kampong Speu	Bat Doeng	533	3.2	0.0	-12.1	→	→	→
	Kampong Thum	Kampong Chheuteal	500	0.0	0.0	-	→	→	-
	Kandal	S'ang	500	-0.2	20.0	-15.7	→	↑	↓
	Oddar Meanchey	Anlong Veng	500	0.0	0.0	-18.9	→	→	↓
	Prey Veng	Chheu Kach Thmei	470	-6.0	8.5	-23.8	↓	→	↓
	Pursat	Chheu Tom	473	-	-2.1	-17.4	-	→	↓
	Siem Reap	Kralanh	573	0.0	21.1	2.4	→	↑	→
Stung Treng	n/a	-	-	-	-	-	-	-	
Svay Rieng	Kampong Trach	-	-	-	-	-	-	-	

↑ Price increase above normal fluctuation
 → Normal price fluctuation
 ↓ Price decrease below normal fluctuation
 - Commodity not available in reporting month

Price fluctuation is considered normal if change within:
 5% for month, 10% for 3 months, 15% for 1 year

(b) Urban markets

Food Item	Province	Market	price (Riel/kg)	price change (%)			direction of change		
				1 month	3 months	1 year	1 month	3 months	1 year
Second quality rice	Banteay Meanchey	Serei Saophoan	-	-	-	-	-	-	-
	Kampong Cham	Boeung Kok	1,733	-3.7	-4.6	-7.1	↘	↘	↘
	Kampong Chhnang	Central	1,900	2.7	5.6	-13.6	↘	↘	↘
	Kampong Speu	Central	2,000	-1.6	0.0	1.7	↘	↘	↘
	Kampong Thum	Central	1,867	3.7	3.7	3.7	↘	↘	↘
	Kandal	Ta Khmao	2,067	0.0	1.6	-6.1	↘	↘	↘
	Oddar Meanchey	Samraong	-	-	-	-	-	-	-
	Prey Veng	Central	-	-	-	-	-	-	-
	Pursat	Central	1,933	-3.3	-7.9	-4.9	↘	↘	↘
	Siem Reap	Psa Leu	2,200	3.1	3.1	-4.3	↘	↘	↘
Stung Treng	Stung Treng	1,800	-1.8	-	-5.3	↘	-	-	
Svay Rieng	Central	-	-	-	-	-	-	-	
Lowest quality rice	Banteay Meanchey	Serei Saophoan	2,000	0.0	0.0	0.0	↘	↘	↘
	Kampong Cham	Boeung Kok	1,600	0.0	1.1	2.1	↘	↘	↘
	Kampong Chhnang	Central	1,800	0.0	0.0	0.0	↘	↘	↘
	Kampong Speu	Central	1,800	-3.6	-1.8	-1.8	↘	↘	↘
	Kampong Thum	Central	1,600	6.7	0.0	0.0	↗	↘	↘
	Kandal	Ta Khmao	1,867	-3.4	1.8	0.0	↘	↘	↘
	Oddar Meanchey	Samraong	2,000	0.0	0.0	5.3	↘	↘	↘
	Prey Veng	Central	1,800	1.9	3.8	12.5	↘	↘	↘
	Pursat	Central	1,800	-	5.9	0.0	-	↘	↘
	Siem Reap	Psa Leu	1,800	1.9	8.0	12.5	↘	↘	↘
Stung Treng	Stung Treng	1,600	-2.0	-	-8.6	↘	-	↘	
Svay Rieng	Central	-	-	-	-	-	-	-	
Vegetable oil	Banteay Meanchey	Serei Saophoan	5,167	0.0	-6.1	-2.7	↘	↘	↘
	Kampong Cham	Boeung Kok	4,567	-2.8	-8.7	-19.9	↘	↘	↘
	Kampong Chhnang	Central	5,000	0.0	0.0	-5.1	↘	↘	↘
	Kampong Speu	Central	-	-	-	-	-	-	-
	Kampong Thum	Central	4,933	2.1	-2.6	-10.3	↘	↘	↘
	Kandal	Ta Khmao	4,933	-0.7	-2.6	-15.4	↘	↘	↘
	Oddar Meanchey	Samraong	5,494	0.0	-9.1	3.0	↘	↘	↘
	Prey Veng	Central	4,867	-9.9	-12.0	-18.9	↘	↘	↘
	Pursat	Central	5,100	4.8	2.0	-7.3	↘	↘	↘
	Siem Reap	Psa Leu	5,000	0.0	-3.2	-8.5	↘	↘	↘
Stung Treng	Stung Treng	5,733	3.0	-	14.7	↘	-	-	
Svay Rieng	Central	-	-	-	-	-	-	-	
Smoked fish (Trei Rie)	Banteay Meanchey	Serei Saophoan	-	-	-	-	-	-	-
	Kampong Cham	Boeung Kok	-	-	-	-	-	-	-
	Kampong Chhnang	Central	12,333	-	-	-	-	-	-
	Kampong Speu	Central	-	-	-	-	-	-	-
	Kampong Thum	Central	21,333	-19.8	-43.1	-7.2	↘	↘	↘
	Kandal	Ta Khmao	26,000	-	-	-	-	-	-
	Oddar Meanchey	Samraong	-	-	-	-	-	-	-
	Prey Veng	Central	-	-	-	-	-	-	-
	Pursat	Central	-	-	-	-	-	-	-
	Siem Reap	Psa Leu	-	-	-	-	-	-	-
Stung Treng	Stung Treng	-	-	-	-	-	-	-	
Svay Rieng	Central	-	-	-	-	-	-	-	

Food Item	Province	Market	price (Riel/kg)	price change (%)			direction of change		
				1 month	3 months	1 year	1 month	3 months	1 year
Fresh fish (Trei Pra)	Banteay Meanchey	Serei Saophoan	6,500	0.0	0.0	-	↘	↘	-
	Kampong Cham	Boeung Kok	6,000	-5.3	-2.7	-	↘	↘	-
	Kampong Chhnang	Central	6,500	0.0	0.0	11.4	↘	↘	↘
	Kampong Speu	Central	6,500	8.3	5.4	14.7	↗	↘	↘
	Kampong Thum	Central	6,000	-14.3	0.0	-	↘	↘	-
	Kandal	Ta Khmao	6,750	-	1.3	12.5	-	↘	↘
	Oddar Meanchey	Samraong	5,000	0.0	0.0	-3.2	↘	↘	↘
	Prey Veng	Central	8,000	44.6	33.3	-	↗	↗	-
	Pursat	Central	6,000	0.0	-7.7	-	↘	↘	-
	Siem Reap	Psa Leu	5,000	-3.2	-11.8	-9.1	↘	↘	↘
Stung Treng	Stung Treng	7,833	-32.9	-	-	↘	-	-	
Svay Rieng	Central	-	-	-	-	-	-	-	
Pork with fat (Sach Bei Choan)	Banteay Meanchey	Serei Saophoan	18,000	0.0	0.0	20.0	↘	↘	↗
	Kampong Cham	Boeung Kok	16,000	-5.0	-9.4	6.7	↘	↘	↘
	Kampong Chhnang	Central	16,000	-5.9	-5.9	11.6	↘	↘	↘
	Kampong Speu	Central	15,000	-6.3	-6.3	9.8	↘	↘	↘
	Kampong Thum	Central	15,000	7.1	-6.3	18.4	↗	↘	↗
	Kandal	Ta Khmao	17,333	4.0	-3.7	10.6	↘	↘	↘
	Oddar Meanchey	Samraong	15,667	0.0	-4.1	17.5	↘	↘	↗
	Prey Veng	Central	16,000	-2.0	-2.0	17.1	↘	↘	↗
	Pursat	Central	15,000	-8.2	-11.8	7.1	↘	↘	↘
	Siem Reap	Psa Leu	14,667	0.0	-2.2	22.2	↘	↘	↗
Stung Treng	Stung Treng	15,000	0.0	-	15.4	↘	-	↗	
Svay Rieng	Central	-	-	-	-	-	-	-	
Duck egg	Banteay Meanchey	Serei Saophoan	500	0.0	0.0	-14.3	↘	↘	↘
	Kampong Cham	Boeung Kok	500	-9.1	-9.1	0.0	↘	↘	↘
	Kampong Chhnang	Central	500	0.7	7.1	-15.3	↘	↘	↘
	Kampong Speu	Central	517	1.3	-1.9	-15.8	↘	↘	↘
	Kampong Thum	Central	500	-	20.0	-	-	↗	-
	Kandal	Ta Khmao	493	-	13.8	-17.8	-	↗	↘
	Oddar Meanchey	Samraong	533	1.3	0.0	-5.9	↘	↘	↘
	Prey Veng	Central	460	6.2	6.2	-14.8	↗	↘	↘
	Pursat	Central	467	0.0	-6.7	-20.0	↘	↘	↘
	Siem Reap	Psa Leu	543	0.0	0.0	-11.9	↘	↘	↘
Stung Treng	Stung Treng	533	6.7	-	-12.1	↗	-	↘	
Svay Rieng	Central	-	-	-	-	-	-	-	

↗ Price increase above normal fluctuation
↘ Normal price fluctuation
↘ Price decrease below normal fluctuation
- Commodity not available in reporting month

Price fluctuation is considered normal if change within:
 5% for month, 10% for 3 months, 15% for 1 year