



# ព្រឹត្តិបត្រថ្លៃអាហារ និងប្រាក់ឈ្នួលពលកម្មនៅកម្ពុជា

## CAMBODIA FOOD PRICE AND WAGE BULLETIN



Agricultural Marketing  
Office, DPS, MAFF

April 2015, Issue 72



### HIGHLIGHTS

- Food purchasing power of households increased by 1% and 2.1% in rural and urban areas respectively month-on-month;
- Retail price of lowest quality rice decreased by 0.3% and 0.2% in rural and urban areas respectively on a month-on-month basis;
- Wholesale price of mixed rice decreased by 0.5% month-on-month and 8% year-on-year;
- In March, inflation rate was 1.1% and overall food prices increased by 4.2% year-on-year;
- Thai A1 Super white rice increased by 0.9% while Vietnamese white rice decreased 1.4% month-on-month and
- International Food Price Index decreased by 1.6% on a month-on-month basis.

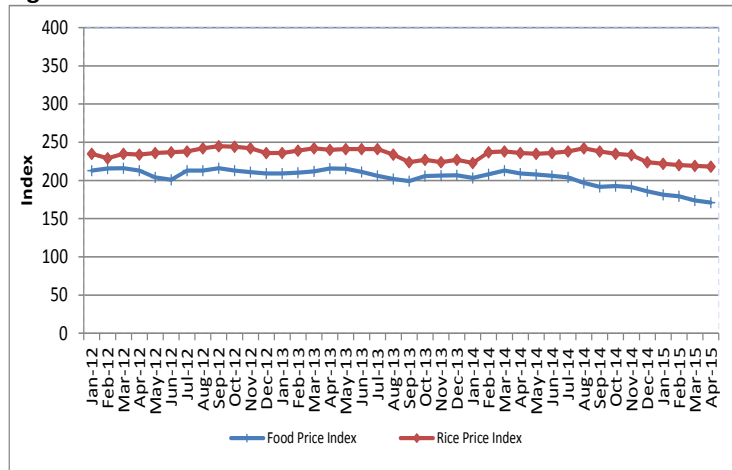
### Overview

This Bulletin is a joint publication<sup>1</sup> by the Agricultural Marketing Office (Department of Planning and Statistics) of the Ministry of Agriculture, Forestry and Fisheries (AMO MAFF) and the United Nations World Food Programme (WFP). It monitors the price of food commodities as well as wage rates for unskilled labor on a monthly basis. It also aims to detect changes and identify trends in the food purchasing power of vulnerable households.

### International Food and Rice Prices

The FAO Food Price Index<sup>2</sup> measures the international price level of a basket of key food commodities. The index averaged 171 points in April 2015, a decrease of 1.6% on a month-on-month basis due to mainly a decline in prices of dairy. The International Rice Price Index averaged 218 points, a slight decrease of 0.5% on a month-on-month basis.

Figure 1: FAO Food Price Index and Rice Price Index



Source: <http://www.fao.org/worldfoodsituation/foodpricesindex/en/>

<sup>1</sup> This publication has been produced jointly since September 2011.

<sup>2</sup> The FAO Food Price Index consists of the average of commodity group price indices (i.e. meat, dairy, cereals, oils/fats, and sugar) weighted with the average export shares of each of the groups for 2002-2004.

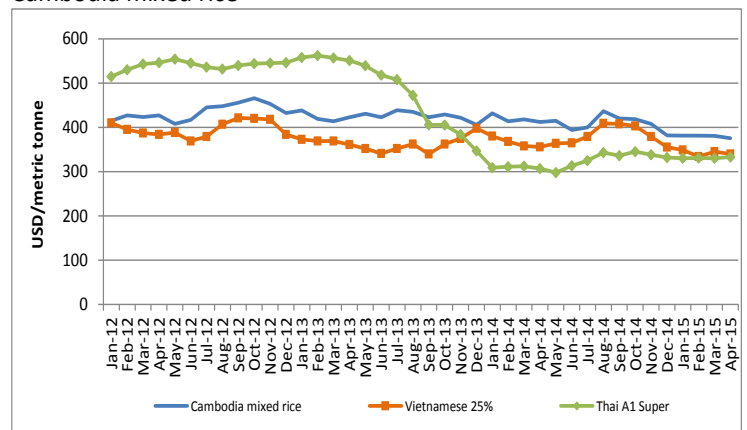
### CONTENT

Overview.....	1
International Food and Rice Prices.....	1
Regional Rice Wholesale Prices.....	1
Cambodia Consumer Price Index (CPI).....	2
Local Food Commodity Prices.....	2
Price Monitoring and Forecasting.....	2
Unskilled Wage.....	3
Terms of Trade.....	3
Appendix 1: Sentinel Surveillance Market Sites.....	4
Appendix 2: Retail Price of Food Commodities by Market.....	5

### Regional Rice Wholesale Prices

In April 2015, the f.o.b. export prices<sup>3</sup> of Thai A1 Super white rice were 333 USD/mt and Vietnamese white rice (25% broken) were 340 USD/mt (Figure 2).

Figure 2: Export price of Thai and Vietnamese white rice and Cambodia mixed rice<sup>4</sup>



Source: <http://www.fao.org/es/esc/prices/PricesServlet.jsp?lang=en>

<sup>3</sup> Free on board (f.o.b.) price includes all charges up to the placing of goods on board a ship at the port of departure specified by the buyer.

<sup>4</sup> Mixed rice is considered a low-quality type of rice. The price in US\$ per metric tonne above was converted from the price in Riel per Kg.

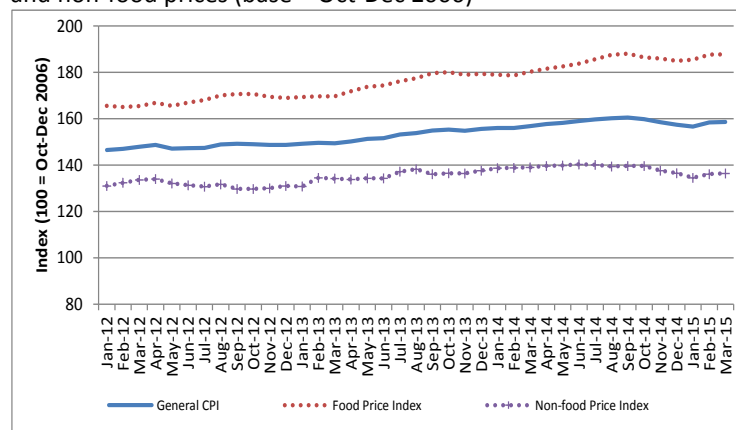
The price of Thai A1 Super white rice increased 0.9% month-on-month and was 8.5% higher year-on-year. On the contrary, the price of Vietnamese white rice decreased by 1.4% month-on-month, and 4.5% on a year-on-year basis. The estimated price of Cambodian mixed rice in April 2015 was 1.5% lower than that of the previous month (381 USD/mt).

### Cambodia Consumer Price Index (CPI)

The general Consumer Price Index (CPI)<sup>5</sup> measures the cost of a consumption basket composed of 259 items. Each item is weighted based on their importance in an average household's expenditure<sup>6</sup>.

In March<sup>7</sup> 2015, the general CPI averaged 158.6 points, increased 0.1% month-on-month. The inflation rate, as measured by the year-on-year increase in the CPI, was 1.1%. Food Price Index (FPI) measures the cost of the food items (comprise 43.2%) in the general CPI's consumption basket, was 187.8 point in March 2015. The FPI increased by 0.1% month-on-month and increased by 4.2% on a year-on-year basis (Figure 3). Non-food price index in March 2015 increased by 0.2% month-on-month, but was 1.9% lower than the same period last year.

**Figure 3:** Relative change in general consumer prices, food prices and non-food prices (base = Oct-Dec 2006)

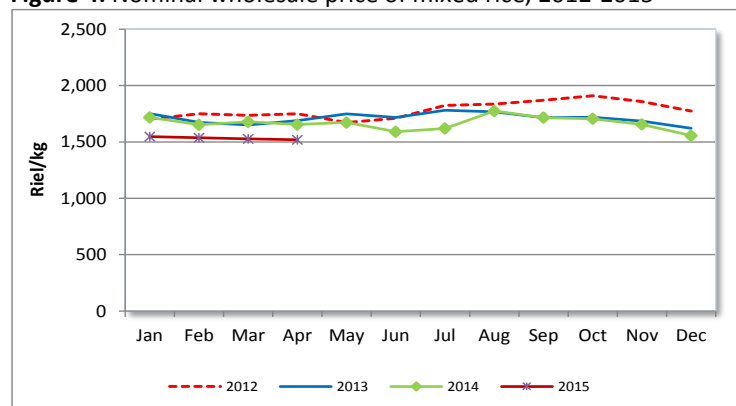


Source: National Institute of Statistics

### Local Food Commodity Prices

Average wholesale price of mixed rice<sup>8</sup> was 1,520 riel/kg in April 2015, a month-on-month decrease of 0.5%. In nominal terms, prices decreased by 8% on a year-on-year basis (Figure 4). In real terms, the wholesale price of mixed rice was 9.1% lower year-on-year.

**Figure 4:** Nominal wholesale price of mixed rice, 2012-2015



Source: AMO MAFF, <http://www.agriculturalmarketinformation.org.kh>

<sup>5</sup> The CPI is collected and reported by the National Institute of Statistics (NIS).

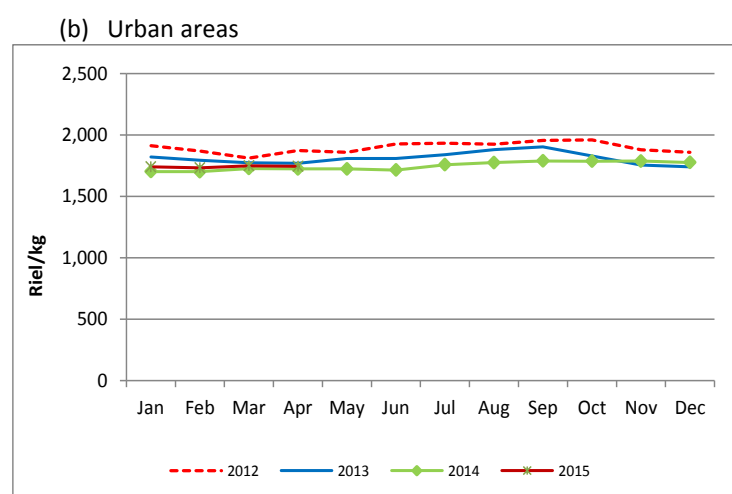
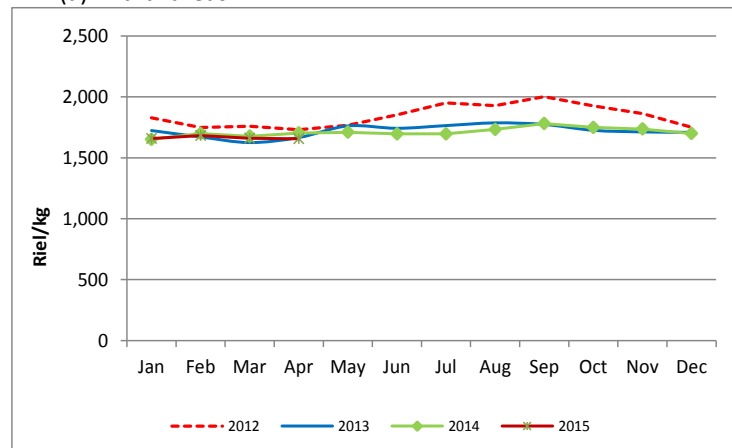
<sup>6</sup> Relative item expenditure weights are derived from the 2004 Cambodia Socio-Economic Survey and adjusted to October-December 2006 price levels.

<sup>7</sup> The April CPI data was not yet available at the time of producing this bulletin.

<sup>8</sup> The wholesale price of mixed rice is collected and reported by the Agricultural Marketing Office of the Ministry of Agriculture, Forestry and Fisheries.

In April 2015, the average nominal retail price of the lowest quality rice<sup>9</sup> in rural and urban areas was 1,657 riel/kg and 1,746 riel/kg, respectively. The prices decreased by 0.3% and 0.2% in rural and urban areas month-on-month respectively (Figure 5).

**Figure 5 (a) (b):** Nominal retail price of lowest quality rice, 2012-15



Source: WFP

On a year-on-year basis, in April 2015, nominal retail rice prices in rural areas decreased by 2.8%, while in urban areas the price increased 1.3%. In real terms, the retail price of rice in rural areas decreased by 3.9% but in urban areas increased by 0.2%.

Retail prices of other food commodities (i.e. second quality rice, vegetable oil, smoked fish, fresh fish, pork, and duck eggs) in each of the 10 rural and 11 urban markets are presented in Appendix 2.

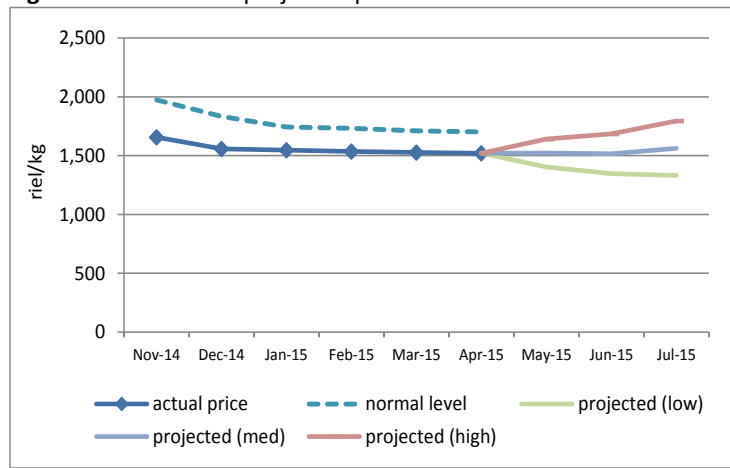
### Price Monitoring and Forecasting

FAO's price monitoring tool compares recent actual wholesale prices from AMO MAFF with "normal" price levels. The normal price level takes into account historical price levels and adjusts for inflation and seasonal factors. A discrepancy between current actual prices and "normal" prices indicates that current prices are higher or lower than what would be expected. In April 2015, the actual wholesale price of mixed rice was 1,520 riel/kg, 10.7% lower than the expected its normal historical price.

Prices for the next three months were also projected, based on the current price, current inflation rate and seasonal factors. The high and low bands are also set so that actual prices will fall within the range 80% of the time. The prices for the next three months were projected to remain stable (Figure 6).

<sup>9</sup> Mixed rice, IR rice and Banla Pdao rice

**Figure 6:** Normal and projected prices of wholesale rice

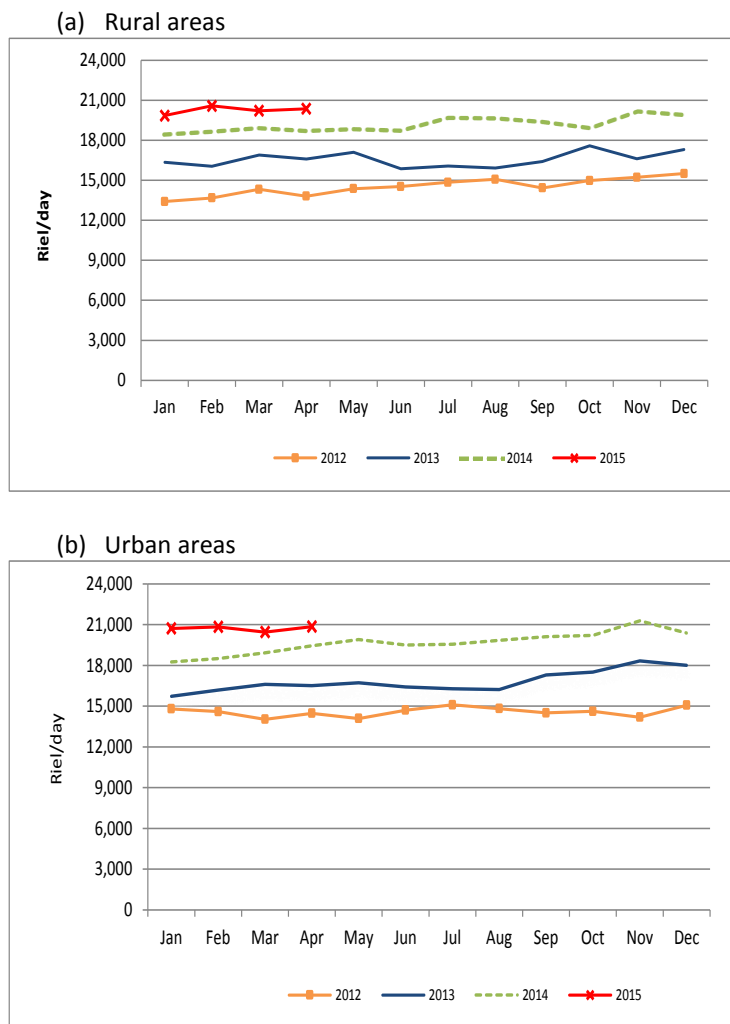


Source: AMO, WFP, FAO

**Unskilled Wage**

Daily wages of unskilled workers engaged in rice and non-rice farming and construction work are monitored by WFP on a monthly basis. In April 2015, the average wage of unskilled labor in rural and urban areas was 20,358 riel/day and 20,850 riel/day, respectively. On a month-on-month basis, the wage rate increased by 0.7% and 2% in rural and urban areas respectively (Figure 7).

**Figure 7(a) (b):** Daily wage of unskilled labor



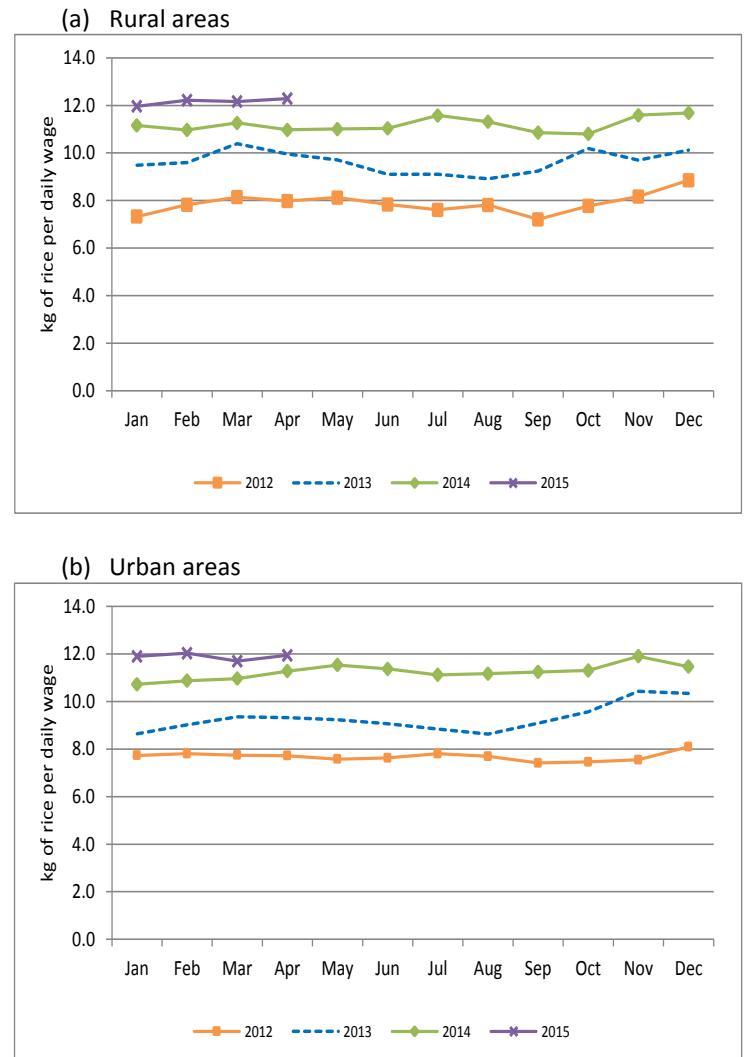
Source: WFP Cambodia

**Terms of Trade**

Terms of trade (ToT) is used to assess household purchasing power by taking the ratio of two different components, namely the daily wage rates of unskilled laborers and the retail price of lowest quality rice in the market. This gives an indication of the amount of rice that an unskilled wage laborer can purchase with a daily wage.

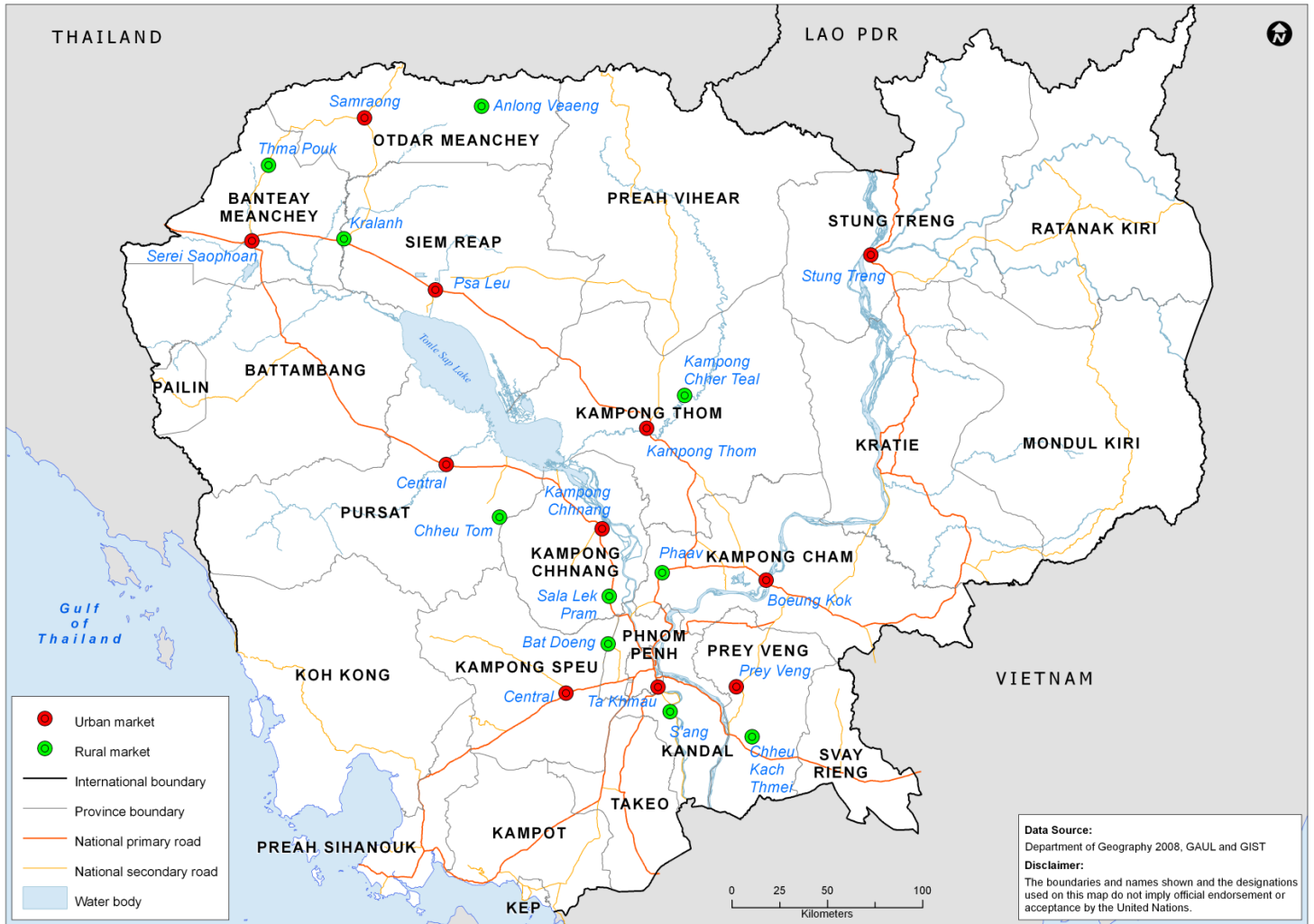
In April 2015, the ToT in rural areas was 12.3 kg/day and in urban areas was 11.9 kg/day. The ToT in rural and urban areas increased by 1% and 2.1% month-on-month respectively (Figure 8). The increase in ToT in both the urban and rural areas was due to an increase in unskilled wage rate and a decrease in price of rice.

**Figure 8(a) (b):** Terms of Trade of unskilled labor and rice



WFP Cambodia

**Appendix 1: Location of sentinel market sites in urban and rural areas in Cambodia**



**Contacts**

**Agricultural Marketing Office**

Department of Planning and Statistics, Ministry of Agriculture, Forestry and Fisheries  
 Mr. Meach Yady: [meachyady@gmail.com](mailto:meachyady@gmail.com)  
<http://www.agriculturalmarketinformation.org.kh>

**United Nations World Food Programme**

Vulnerability Analysis and Mapping (VAM) Unit  
 Mr. Jonathan Rivers: [jonathan.rivers@wfp.org](mailto:jonathan.rivers@wfp.org)  
 Mr. Yav Long: [Yav.Long@wfp.org](mailto:Yav.Long@wfp.org)  
 Mr. Chanvibol Choeur: [Chanvibol.Choeur@wfp.org](mailto:Chanvibol.Choeur@wfp.org)  
<http://www.wfp.org/countries/cambodia>

Appendix 2(a) (b): Retail price of food commodities by market

(a) Rural markets

Food Item	Province	Market	price (Riel/kg)	price change (%)			direction of change		
				1 month	3 months	1 year	1 month	3 months	1 year
Second quality rice	Banteay Meanchey	Thma Puok	-	-	-	-	-	-	-
	Kampong Cham	Pha'av	1,800	1.9	-	5.9	↗	-	↗
	Kampong Chhnang	Sala Lek Pram	2,367	18.3	18.3	29.1	↗	↗	↗
	Kampong Speu	Bat Doeng	2,000	-	2.6	-	-	↗	-
	Kampong Thum	Kampong Chheuteal	1,800	1.9	5.9	3.8	↗	↗	↗
	Kandal	S'ang	1,967	0.0	1.7	3.5	↗	↗	↗
	Oddar Meanchey	Anlong Veng	2,200	0.0	4.8	0.0	↗	↗	↗
	Prey Veng	Chheu Kach Thmei	-	-	-	-	-	-	-
	Pursat	Chheu Tom	-	-	-	-	-	-	-
	Siem Reap	Kralanh	-	-	-	-	-	-	-
Stung Treng	n/a	-	-	-	-	-	-	-	
Svay Rieng	Kampong Trach	-	-	-	-	-	-	-	
Lowest quality rice	Banteay Meanchey	Thma Puok	2,000	0.0	0.0	0.0	↗	↗	↗
	Kampong Cham	Pha'av	1,550	3.3	-4.1	6.9	↗	↗	↗
	Kampong Chhnang	Sala Lek Pram	1,800	5.9	-1.8	0.0	↗	↗	↗
	Kampong Speu	Bat Doeng	1,800	0.0	-2.7	-2.7	↗	↗	↗
	Kampong Thum	Kampong Chheuteal	1,500	-	-	-	-	-	-
	Kandal	S'ang	1,767	0.0	1.9	1.9	↗	↗	↗
	Oddar Meanchey	Anlong Veng	1,533	-4.2	-6.1	-8.0	↗	↗	↗
	Prey Veng	Chheu Kach Thmei	1,550	3.3	5.7	8.1	↗	↗	↗
	Pursat	Chheu Tom	1,500	-9.1	7.1	-8.2	↘	↗	↗
	Siem Reap	Kralanh	1,567	9.3	11.9	-11.3	↗	↗	↗
Stung Treng	n/a	-	-	-	-	-	-	-	
Svay Rieng	Kampong Trach	-	-	-	-	-	-	-	
Vegetable oil	Banteay Meanchey	Thma Puok	6,000	0.0	0.0	-3.6	↗	↗	↗
	Kampong Cham	Pha'av	4,633	-2.8	11.2	-13.7	↗	↗	↘
	Kampong Chhnang	Sala Lek Pram	4,467	-4.3	-7.6	-18.8	↗	↘	↘
	Kampong Speu	Bat Doeng	4,500	-3.6	-6.9	-10.0	↗	↗	↘
	Kampong Thum	Kampong Chheuteal	4,500	-3.6	-2.2	-15.6	↗	↗	↘
	Kandal	S'ang	4,267	-0.8	-3.8	-17.9	↗	↘	↘
	Oddar Meanchey	Anlong Veng	5,000	9.9	-11.9	-24.2	↗	↘	↘
	Prey Veng	Chheu Kach Thmei	4,567	3.8	-0.7	-9.9	↗	↗	↘
	Pursat	Chheu Tom	4,667	0.0	0.0	-15.7	↗	↗	↘
	Siem Reap	Kralanh	5,167	3.3	-6.1	-6.1	↗	↗	↘
Stung Treng	n/a	-	-	-	-	-	-	-	
Svay Rieng	Kampong Trach	-	-	-	-	-	-	-	
Smoked fish (Trei Riel)	Banteay Meanchey	Thma Puok	26,000	-	-	-	-	-	-
	Kampong Cham	Pha'av	18,000	-10.0	-	-	↘	-	-
	Kampong Chhnang	Sala Lek Pram	-	-	-	-	-	-	-
	Kampong Speu	Bat Doeng	30,000	0.0	10.4	28.8	↗	↗	↗
	Kampong Thum	Kampong Chheuteal	20,000	5.3	17.6	13.6	↗	↗	↘
	Kandal	S'ang	-	-	-	-	-	-	-
	Oddar Meanchey	Anlong Veng	-	-	-	-	-	-	-
	Prey Veng	Chheu Kach Thmei	24,500	13.4	-	42.0	↗	-	↗
	Pursat	Chheu Tom	-	-	-	-	-	-	-
	Siem Reap	Kralanh	-	-	-	-	-	-	-
Stung Treng	n/a	-	-	-	-	-	-	-	
Svay Rieng	Kampong Trach	-	-	-	-	-	-	-	

Food Item	Province	Market	price (Riel/kg)	price change (%)			direction of change		
				1 month	3 months	1 year	1 month	3 months	1 year
Fresh fish (Trei Pra)	Banteay Meanchey	Thma Puok	-	-	-	-	-	-	-
	Kampong Cham	Pha'av	6,500	-7.1	-	0.0	↘	-	↗
	Kampong Chhnang	Sala Lek Pram	6,000	4.3	-4.0	0.0	↗	↗	↗
	Kampong Speu	Bat Doeng	6,000	0.0	0.0	0.0	↗	↗	↗
	Kampong Thum	Kampong Chheuteal	6,833	-2.4	5.1	-5.7	↗	↗	↗
	Kandal	S'ang	6,500	-3.7	-	4.0	↗	-	↗
	Oddar Meanchey	Anlong Veng	5,000	0.0	0.0	0.0	↗	↗	↗
	Prey Veng	Chheu Kach Thmei	5,833	-16.7	0.0	-2.8	↘	↗	↗
	Pursat	Chheu Tom	7,000	0.0	2.4	16.7	↗	↗	↗
	Siem Reap	Kralanh	6,500	30.0	30.0	25.8	↗	↗	↗
Stung Treng	n/a	-	-	-	-	-	-	-	
Svay Rieng	Kampong Trach	-	-	-	-	-	-	-	
Pork with fat (Sach Bei Choan)	Banteay Meanchey	Thma Puok	15,000	0.0	-6.3	-	↗	↗	-
	Kampong Cham	Pha'av	15,000	-2.2	7.1	7.1	↗	↗	↗
	Kampong Chhnang	Sala Lek Pram	13,333	-7.0	-11.1	-	↘	↘	-
	Kampong Speu	Bat Doeng	14,000	-2.3	-2.3	-10.6	↗	↗	↗
	Kampong Thum	Kampong Chheuteal	14,000	0.0	0.0	-6.7	↗	↗	↗
	Kandal	S'ang	16,333	1.0	8.9	-2.0	↗	↗	↗
	Oddar Meanchey	Anlong Veng	14,000	0.0	10.5	7.7	↗	↗	↗
	Prey Veng	Chheu Kach Thmei	15,000	0.0	4.7	7.1	↗	↗	↗
	Pursat	Chheu Tom	15,000	0.0	-11.8	-16.7	↗	↘	↘
	Siem Reap	Kralanh	12,000	0.0	-2.7	-7.7	↗	↗	↗
Stung Treng	n/a	-	-	-	-	-	-	-	
Svay Rieng	Kampong Trach	-	-	-	-	-	-	-	
Duck egg	Banteay Meanchey	Thma Puok	550	0.0	0.0	-8.3	↗	↗	↗
	Kampong Cham	Pha'av	500	1.4	15.4	0.0	↗	↗	↗
	Kampong Chhnang	Sala Lek Pram	500	0.0	1.4	0.0	↗	↗	↗
	Kampong Speu	Bat Doeng	513	0.0	1.3	2.7	↗	↗	↗
	Kampong Thum	Kampong Chheuteal	500	0.0	0.0	0.0	↗	↗	↗
	Kandal	S'ang	467	-3.4	-9.1	2.9	↗	↗	↗
	Oddar Meanchey	Anlong Veng	517	3.3	3.3	-8.8	↗	↗	↗
	Prey Veng	Chheu Kach Thmei	493	-1.3	7.2	8.0	↗	↗	↗
	Pursat	Chheu Tom	473	5.2	5.2	-0.7	↗	↗	↗
	Siem Reap	Kralanh	520	4.0	4.0	-8.2	↗	↗	↗
Stung Treng	n/a	-	-	-	-	-	-	-	
Svay Rieng	Kampong Trach	-	-	-	-	-	-	-	

↗ Price increase above normal fluctuation  
 ↗ Normal price fluctuation  
 ↘ Price decrease below normal fluctuation  
 - Commodity not available in reporting month

Price fluctuation is considered normal if change within:  
 5% for month, 10% for 3 months, 15% for 1 year

**(b) Urban markets**

Food Item	Province	Market	price (Riel/kg)	price change (%)			direction of change		
				1 month	3 months	1 year	1 month	3 months	1 year
Second quality rice	Banteay Meanchey	Serei Saophoan	2,200	-4.3	-	-	↗	-	-
	Kampong Cham	Boeung Kok	1,800	0.0	10.2	-15.6	↗	↕	↘
	Kampong Chhnang	Central	1,967	-1.7	-1.7	5.4	↗	↗	↗
	Kampong Speu	Central	2,000	2.6	1.7	11.1	↗	↗	↗
	Kampong Thum	Central	1,767	1.9	10.4	3.9	↗	↕	↗
	Kandal	Ta Khmao	2,000	-3.2	0.0	-3.2	↗	↗	↗
	Oddar Meanchey	Samraong	-	-	-	-	-	-	-
	Prey Veng	Central	-	-	-	-	-	-	-
	Pursat	Central	1,867	0.0	-13.8	-3.4	↗	↘	↗
	Siem Reap	Psa Leu	2,167	4.8	4.8	-4.4	↗	↗	↗
Stung Treng	Stung Treng	1,700	-	-	-	-	-	-	
Svay Rieng	Central	-	-	-	-	-	-	-	
Lowest quality rice	Banteay Meanchey	Serei Saophoan	1,900	-5.0	-5.0	-5.0	↗	↗	↗
	Kampong Cham	Boeung Kok	1,567	2.2	8.0	11.9	↗	↗	↗
	Kampong Chhnang	Central	1,800	1.9	5.9	5.9	↗	↗	↗
	Kampong Speu	Central	1,800	-2.7	0.0	-10.0	↗	↗	↗
	Kampong Thum	Central	1,500	0.0	0.0	0.0	↗	↗	↗
	Kandal	Ta Khmao	1,800	-3.6	-1.8	-1.8	↗	↗	↗
	Oddar Meanchey	Samraong	2,000	11.1	0.0	7.1	↕	↗	↗
	Prey Veng	Central	1,800	0.0	8.0	5.9	↗	↗	↗
	Pursat	Central	1,667	0.0	-9.1	4.2	↗	↗	↗
	Siem Reap	Psa Leu	1,767	3.9	8.2	8.2	↗	↗	↗
Stung Treng	Stung Treng	1,600	-	-	-	-	-	-	
Svay Rieng	Central	-	-	-	-	-	-	-	
Vegetable oil	Banteay Meanchey	Serei Saophoan	5,800	0.0	0.0	-4.0	↗	↗	↗
	Kampong Cham	Boeung Kok	4,600	0.0	0.0	-8.0	↗	↗	↗
	Kampong Chhnang	Central	4,267	-7.2	-7.2	-15.8	↘	↗	↘
	Kampong Speu	Central	4,500	-3.6	5.5	-10.0	↗	↗	↗
	Kampong Thum	Central	4,600	-7.4	-4.2	-10.4	↘	↗	↗
	Kandal	Ta Khmao	4,633	-4.1	-6.1	-12.6	↗	↗	↗
	Oddar Meanchey	Samraong	4,398	-3.3	-24.9	-27.2	↗	↘	↘
	Prey Veng	Central	4,833	0.0	5.1	-4.6	↗	↗	↗
	Pursat	Central	5,167	14.0	8.4	-3.7	↕	↗	↘
	Siem Reap	Psa Leu	4,500	-2.9	0.0	-21.8	↗	↗	↘
Stung Treng	Stung Treng	6,000	5.9	-	-	↕	-	-	
Svay Rieng	Central	-	-	-	-	-	-	-	
Smoked fish (Trei Riel)	Banteay Meanchey	Serei Saophoan	26,000	-	-	-	-	-	-
	Kampong Cham	Boeung Kok	25,000	11.1	29.2	-3.0	↕	↕	↗
	Kampong Chhnang	Central	-	-	-	-	-	-	-
	Kampong Speu	Central	30,000	0.0	-	12.5	↗	-	↗
	Kampong Thum	Central	23,500	17.5	28.8	9.0	↕	↕	↗
	Kandal	Ta Khmao	-	-	-	-	-	-	-
	Oddar Meanchey	Samraong	-	-	-	-	-	-	-
	Prey Veng	Central	23,400	2.6	43.3	-	↗	↕	-
	Pursat	Central	-	-	-	-	-	-	-
	Siem Reap	Psa Leu	-	-	-	-	-	-	-
Stung Treng	Stung Treng	26,333	31.7	-	-	↕	-	-	
Svay Rieng	Central	-	-	-	-	-	-	-	

Food Item	Province	Market	price (Riel/kg)	price change (%)			direction of change		
				1 month	3 months	1 year	1 month	3 months	1 year
Fresh fish (Trei Pra)	Banteay Meanchey	Serei Saophoan	6,000	0.0	0.0	-	↗	↗	-
	Kampong Cham	Boeung Kok	-	-	-	-	-	-	-
	Kampong Chhnang	Central	6,500	-	8.3	5.4	-	↗	↗
	Kampong Speu	Central	6,500	0.0	0.0	-	↗	↗	-
	Kampong Thum	Central	-	-	-	-	-	-	-
	Kandal	Ta Khmao	6,667	-7.0	-4.8	-4.8	↘	↗	↗
	Oddar Meanchey	Samraong	5,000	0.0	0.0	0.0	↗	↗	↗
	Prey Veng	Central	6,667	2.6	14.3	21.2	↗	↕	↕
	Pursat	Central	-	-	-	-	-	-	-
	Siem Reap	Psa Leu	6,000	2.9	-10.0	20.0	↗	↘	↕
Stung Treng	Stung Treng	7,333	0.0	-	-	↗	-	-	
Svay Rieng	Central	-	-	-	-	-	-	-	
Pork with fat (Sach Bei Choan)	Banteay Meanchey	Serei Saophoan	16,000	0.0	-5.9	-9.4	↗	↗	↗
	Kampong Cham	Boeung Kok	15,500	-1.1	-1.1	-13.1	↗	↗	↗
	Kampong Chhnang	Central	15,000	-2.2	-2.2	-11.8	↗	↗	↗
	Kampong Speu	Central	14,667	-2.2	-2.2	-8.3	↗	↗	↗
	Kampong Thum	Central	15,333	17.9	9.5	2.2	↕	↗	↗
	Kandal	Ta Khmao	17,333	6.1	2.0	-3.7	↕	↗	↗
	Oddar Meanchey	Samraong	15,000	9.8	2.3	0.0	↕	↗	↗
	Prey Veng	Central	16,333	2.1	45.4	-9.3	↗	↕	↗
	Pursat	Central	14,000	5.0	0.0	-12.5	↗	↗	↗
	Siem Reap	Psa Leu	13,000	0.0	-2.5	-13.3	↗	↗	↗
Stung Treng	Stung Treng	15,000	2.3	-	-	↗	-	-	
Svay Rieng	Central	-	-	-	-	-	-	-	
Duck egg	Banteay Meanchey	Serei Saophoan	500	0.0	-7.4	-4.8	↗	↗	↗
	Kampong Cham	Boeung Kok	500	0.0	0.0	4.9	↗	↗	↗
	Kampong Chhnang	Central	493	-1.3	-1.3	5.7	↗	↗	↗
	Kampong Speu	Central	510	2.0	4.8	-4.4	↗	↗	↗
	Kampong Thum	Central	500	0.0	0.0	0.0	↗	↗	↗
	Kandal	Ta Khmao	493	0.0	-2.6	-1.3	↗	↗	↗
	Oddar Meanchey	Samraong	550	6.5	10.0	-8.3	↕	↗	↗
	Prey Veng	Central	493	-3.3	5.7	13.8	↗	↗	↗
	Pursat	Central	450	-10.0	-2.9	-3.6	↘	↗	↗
	Siem Reap	Psa Leu	503	-1.3	-1.9	-7.4	↗	↗	↗
Stung Treng	Stung Treng	500	-	-	-	-	-	-	
Svay Rieng	Central	-	-	-	-	-	-	-	

- ↕ Price increase above normal fluctuation
- ↗ Normal price fluctuation
- ↘ Price decrease below normal fluctuation
- Commodity not available in reporting month

Price fluctuation is considered normal if change within:  
5% for month, 10% for 3 months, 15% for 1 year