

## Geographic impact

A magnitude 7.8 earthquake occurred at 77km NW of Kathmandu at a depth of 15 km below ground.

Powerful aftershocks greater than magnitude 6 have been felt in the zones of Bagmati, Lamjung and Gandaki.

Geographical profile

epicentre in Lamjung district

12 districts heavily affected

hilly and mountainous terrain

Profile of the affected population

1.2 million households affected

3.5 million severely affected

1.6 million people needing priority assistance

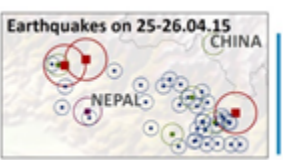
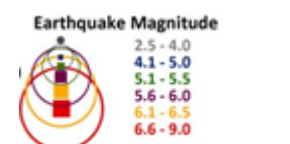
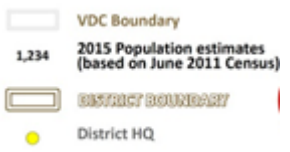
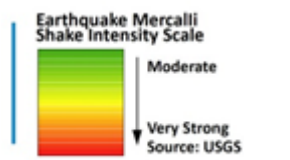
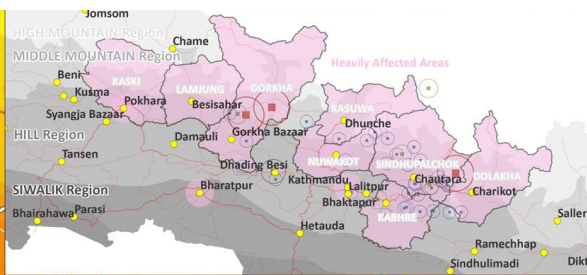
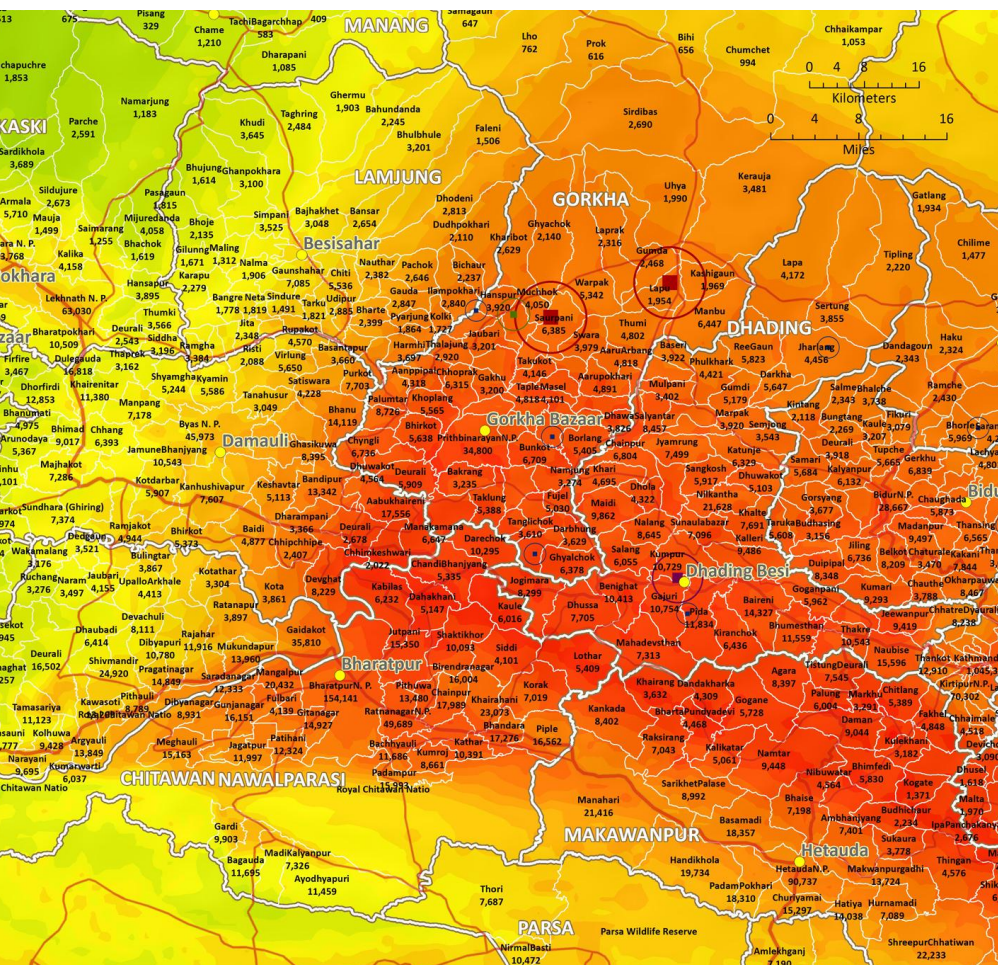
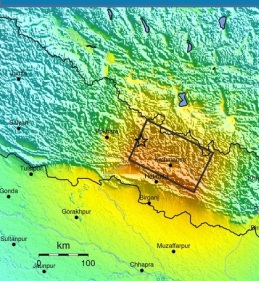
Livelihood profile

subsistence agriculture is a key livelihood

livestock rearing is important in hills and mountains

casual labour is important in urban areas

migration is critical in hill areas



# OVERVIEW



## Resilience profile

**Resilience:** Households in the rural areas - especially in hills and mountains - are among the least resilient, due to high poverty rates, and limited access to roads and markets. Urban areas are more resilient given higher connectivity and market access. Rehabilitation of critical infrastructure will be a priority in order to restore normalcy.

Food accounts for over 65% of household expenditures, for over half of rural households. This makes them particularly vulnerable to price increases.

**Social protection (most relevant):** The government's *Poverty Alleviation Fund* safety net targets the poorest households, through rural community infrastructure and income generation projects. The *Agriculture Disaster Relief Programme*, also government led, provides assistance through seeds and fertilizer support for disaster affected farmers. Some livestock insurance schemes are also active. Other programmes include school meals, pensions, and widow and disability allowances.



## Food security and nutrition

**Diet diversity:** In rural areas, close to 90% of households derive over 65% of their caloric intake from staples (cereals and tubers), reflecting low access to nutritious and balanced diet. After staples, the main sources of energy are milk and oil, followed by pulses and vegetables. Dietary diversity is particularly low in remote, mountainous areas. Diet diversity is relatively good in urban areas.

**Food sources:** In rural areas, about half of the food (in terms of caloric intake) comes from own production. Aside from staples, half of which are home produced, households also produce milk, vegetables and pulses themselves. In Kathmandu and other urban areas, households buy almost all of their food. In both urban and rural areas, meat and oil is mainly purchased.

**Nutrition:** Half the children in rural areas, and a quarter of children in Kathmandu, are stunted. Wasting rates are around 6%, in both rural and urban affected areas.



## Livelihood profile

**Livelihoods:** The dominant livelihood activity in affected rural areas is subsistence farming (cropping and livestock rearing), followed by remittances and casual labour. Seasonal migration, primarily to India, is also an important livelihood strategy, especially in the Hill areas, where about half of the households have at least one member migrating. In urban areas, livelihoods are more diversified, and include government and factory employment, tourism, as well as casual labor. Casual labourers will likely be employed in the short term to remove debris, and so will likely restore their livelihoods shortly.

**Agriculture:** The main winter crops (wheat and barely) have recently been harvested, but damage to stocks are highly likely. Planting for maize was ongoing when the earthquake struck, and planting for rice and millet was due to start next month. It is therefore likely that maize, rice and millet production this year will be severely affected.



## Markets and Cash & Vouchers

**Markets:** Markets in both urban and rural areas are thought to have been severely disrupted. Many of the affected rural districts have very limited market access, even in normal times. The main regional markets supplying the affected areas are Bharatpur (likely to have been severely affected) and Bhairahawa (possibly less affected), which both serve as key trade hubs with India. Bharatpur is particularly important, as it supplies the urban consumer market hub in Pokhara - which itself services rural markets in surrounding affected districts.

**Prices:** Price hikes in both urban and rural areas are expected. Even in normal conditions, markets in rural areas are poorly integrated, with food prices largely determined by transportation costs. Prices in rural mountain districts, in particular, can be up to three times more expensive than in source markets. In addition, past experience has shown that prices can quickly double following road closures.

**Cash & Vouchers:** Given the above, it is recommended to focus the immediate response on **in-kind assistance**. The appropriateness of transitioning to cash in some areas will be determined through further assessments.



## Logistics and communications

**Coordination:** The Government of Nepal has activated the Logistics Cluster, which WFP is co-leading. Immediate priorities will be supporting search and rescue teams; transporting lifesaving medical equipment, items and personnel; and transporting emergency food, shelter and other non-food items.

**Air transport:** There are 47 airstrips countrywide, but only the one at Kathmandu airport can accommodate wide-bodied fixed-wing aircrafts. In view of the anticipated heavy congestion at the Kathmandu airport, WFP is working with the Government and the Humanitarian Coordination Team on a prioritisation mechanism for incoming flights/delivery of relief items. Assessments are also ongoing to identify other potential airstrips within the country. Jet A1 fuel (aircraft) is imported from India, so ensuring fuel pipeline is essential.

In the initial days, humanitarian operations will draw on the foreign military presence. The deployment of UNHAS will also be required, particularly helicopters to access remote mountainous areas,

**Land and sea transport:** Truck availability and capacity is normally good in Nepal. Access within the Kathmandu Valley appears to be fine, although accessing mountainous areas within the valley is reported to be impossible due to extensive damage. To ease the traffic flow into Kathmandu airport, WFP is exploring the use of road transport from India (e.g. Calcutta and Birganj). However, possible delays due to customs clearance at the border, as well as onwards transport within Nepal, might prove very challenging.

**Warehouses:** The recently completed WFP-government humanitarian staging area near Kathmandu airport is operational. In country, WFP has 32 mobile storage units in-country ready to deploy and establish as hubs in the affected areas.

**IT and communications:** VHF radio communication is working well. Although Nepal Telecom and Ncell mobile networks are working in most areas of Kathmandu, networks are congested and making calls is difficult. There is no power in the city area, meaning cellphone and computer batteries may soon run out. Internet through local service providers is working. There is very little information on mobile networks and power in rural areas.

## ? ASSUMPTIONS

**Geographic impact:** based on the USGS shakemaps and Mercalli intensity scale.

**Affected population:** all population according to projected 2011 census data residing in the areas assumed strongly to violently impacted. Population living in assumed moderately and lightly impacted areas were not included.

**People in need of food assistance:** determined by overlaying geographic impact with quality of housing indicator. Houses made of mud bonded bricks or unbaked bricks were assumed less resistant than cement and wood/bamboo housing.



## REFERENCES & LINKS

- Excel spreadsheet on estimated affected population and households by VDC's and priority areas.
- OPWeb <http://opweb.wfp.org/>
- OCHA COD/FOD registry <http://www.humanitarianresponse.info/applications/data>
- WFP Geonode <http://geonode.wfp.org>
- Copernicus <http://www.copernicus.eu>
- NeKSAP - Food Security Information System in Nepal <http://www.neksap.org.np/>



## TRAVELLERS' INFORMATION

The average altitude of the affected areas ranges from 1,400 m to 2,500m.

The weather is cold, with temperatures forecast to be around 12 degrees Centigrade at night and a maximum of 27 degrees during daytime. During daytime it can be expected to be sunny. **Heavy rains are expected over the coming days**, which will complicate the operation.

Not available:

- Accomodation
- Food and drinking water
- Shops /restaurants
- Clothing and footwear
- Heating
- Electricity
- Mobile phone network
- Health care



## CONTACTS

For more information, contact:

NEPAL:

**Kurt Burja**, VAM Officer, *Nepal*  
**Man Kshetri**, GIS Officer, *Nepal*

BANGKOK:

**Siemon Hollema**, Senior Regional Programme Officer (VAM), *Regional Bureau for Asia*  
**Ruangdech Pongprom**, Programme Officer, *Regional Bureau for Asia*  
**Amy Chong**, GIS Officer, *Regional Bureau for Asia*  
**Ellen Kiosterud**, Statistical Analyst, *Regional Bureau for Asia*  
**Darryl Miller**, Food Security Analyst, *Regional Bureau for Asia*  
**Anna Law**, Food Security Analyst, *Regional Bureau for Asia*  
**Krishna Krishnamurthy**, Regional Climate Risk Analyst, *Regional Bureau for Asia*

ROME:

**Filippo Pongelli**, GIS Officer (Emergencies), *Rome Office*  
**Francesco Stompanato**, GIS Officer (Emergencies), *Rome Office*  
**Rashid Kashif**,

# STATISTICAL PROFILE

Region	District	Total population 2015	Households (2011)	Food poverty prevalence	Underweight	Wasting	Stunting	Diarrhoea	Share of households with weak houses.	Share of houses without toilet	Share households with improved drinking water source	Poverty rates
Central	Dolakha	198,358	45,658	35%	32%	7%	51%	11%	92%	30%	78%	26%
Central	Sindhupalchok	169,559	34,615	37%	31%	9%	48%	12%	72%	36%	78%	25%
Central	Kabhre	402,104	80,651	22%	25%	10%	38%	11%	84%	27%	79%	14%
Central	Lalitpur	490,393	109,505	14%	19%	8%	31%	13%	30%	4%	70%	8%
Central	Bhaktapur	320,105	68,557	12%	20%	8%	31%	13%	39%	3%	82%	13%
Central	Kathmandu	1,821,040	435,544	20%	15%	6%	28%	15%	16%	1%	70%	8%
Central	Nuwakot	295,532	59,194	25%	26%	10%	39%	10%	92%	41%	87%	20%
Central	Rasuwa	45,151	9,741	41%	32%	9%	47%	10%	87%	43%	88%	32%
Central	Dhading	358,242	73,842	26%	23%	9%	42%	11%	85%	30%	85%	19%
Western	Gorkha	288,208	66,458	22%	25%	8%	42%	12%	87%	27%	63%	20%
Western	Lamjung	178,055	42,048	19%	21%	7%	39%	12%	76%	20%	88%	17%
Western	Kaski	515,411	125,459	9%	15%	8%	31%	13%	32%	1%	92%	4%