



Highlights:

- Food prices in east Aleppo city significantly decreased after humanitarian access and better food availability in the markets.
- In Deir-ez-Zor city, accessibility to sufficient food becomes a challenge.
- In January 2017, the nominal retail prices of rice, wheat flour, bulgur and bread in monitored markets showed downward trends.
- Wholesale price of wheat grain increased by 52 percent, bulgur by 33 percent and white rice by 38 percent year-on-year.
- Remarkable decrease in average nominal price of fuel compared to last month (20 percent for diesel and 29 percent for a cylinder of butane gas).

For further information please contact :

Ahmad Shah : Ahmadshah.Shahi@wfp.org

Dima Alhumsj : Dima.Alhumsj@wfp.org

A: Standard Food Basket

In January 2017, the national average cost of a standard food basket¹ (group of essential commodities) was SYP 36,025, a decrease of seven percent compared to last month, but still higher by three percent compared to six months ago and 44 percent compared to last year cost.

Market data indicates a decrease in food basket cost in many markets across the country. This is in line with the downward trend in fuel price, access restrictions on Wadi Barada being lifted as well as the positive impact of recent humanitarian access to east Aleppo city.

Looking at the pattern of food basket cost across all main markets, the lowest cost was observed in Dar'a governorate at SYP 26,925 while Deir-ez-Zor governorate recorded the highest cost with SYP 97,400 (three times higher than Damascus market).

In Deir-ez-Zor city, the accessibility to sufficient food became a challenge due to the increase fighting in the area. This also resulted in airdrops. This caused an overall increase in the nominal prices of food commodities.

In east Aleppo city the food basket cost declined to SYP 30,435, representing a decrease of 84 percent compared to December 2016.

Chart 1: Min. vs. Max. Cost of Food Basket (in SYP)

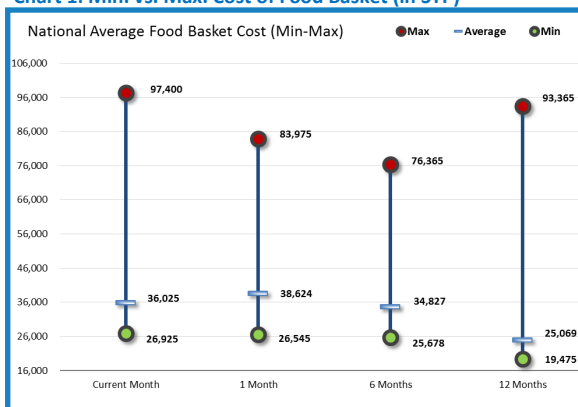
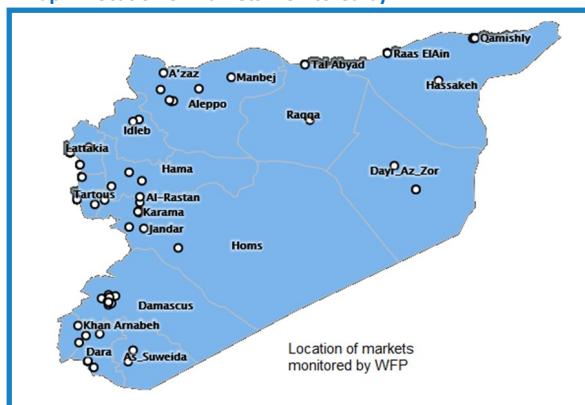


Figure 1: Food Basket Cost and Changes (in SYP)

Governorate	Price January 2017	Price 1 month change	Price 6 months changes	Price 12 months changes
Aleppo	SYP 30,799	-58%	7%	49%
Damascus	SYP 30,663	0%	5%	54%
Dar'a	SYP 26,925	1%	5%	18%
Deir-ez-Zor	SYP 97,400	16%	28%	4%
Hama	SYP 32,532	-1%	9%	52%
Al-Hasakeh	SYP 34,140	-8%	-18%	33%
Homs	SYP 29,322	0%	8%	50%
Lattakia	SYP 30,644	-3%	6%	57%
Ar-Raqqa	SYP 33,644	-9%	-24%	23%
Rural Damascus	SYP 33,175	-4%	-13%	-11%
As-Sweida	SYP 32,250	1%	10%	54%
Tartous	SYP 30,363	0%	1%	34%
Quneitra	SYP 28,163	-1%	1%	N/A
Idlib	SYP 34,338	0%	12%	N/A
Average	SYP 36,025	-7%	3%	44%

Map 1: Location of markets monitored by WFP



1. The cost of a standard basket of dry goods providing 1,930 kcal a day for a family of five during a month. The basket includes 37 kg of bread, 19 kg rice, 19 kg lentils, 5 kg of sugar, and 7 kg of vegetable oil.

B: Retail Prices

1- Wheat Flour, Rice and Bulgur:

Following notable decrease in fuel prices and recent improved humanitarian access, significant positive effects on staple food prices were recorded in many markets across country.

During the reporting month, the national average nominal retail price of wheat flour declined by 21 percent compared to December with a price of SYP 270/kg, while rice slightly decreased by two percent and sold at SYP 555/kg. Similarly, bulgur went down by six percent. However, the prices are still higher than July levels by six percent for wheat flour and seven percent for rice and bulgur. Year-on-year, the trend indicate very volatile changes across the year with an increase of five percent for wheat flour and 32 percent for rice.

In January 2017, Deir-ez-Zor governorate markets recorded the highest price for rice among all monitored markets, as one kg was sold at SYP 1,175, which is three times higher than Damascus market prices. The lowest price for rice was observed in As-Sweida at SYP 325/kg.

Similarly wheat flour in Deir-ez-Zor registered a peak price of SYP 595/kg, while the price in Quneitra markets was the lowest at SYP 200/kg. The highest price for bulgur was also observed in Deir-ez-Zor markets at SYP 925/kg, while the lowest price was reported in Dar'a markets at SYP 200/kg.

In besieged Deir-ez-Zor city, the price for one kg of rice was recorded at SYP 1,425/kg, which is 43 percent higher compared to last month, 29 percent compared to six months ago, but still lower by 64 percent when compared to the month before airdrops were initiated. In eastern Aleppo city, one kg of rice was sold at SYP 550 in January presenting a decrease of 63 percent compared to last month. The price for a kg of wheat flour declined to SYP 260/kg, which is less than December level by a staggering 93 percent clearly illustrating the importance of humanitarian assistance.

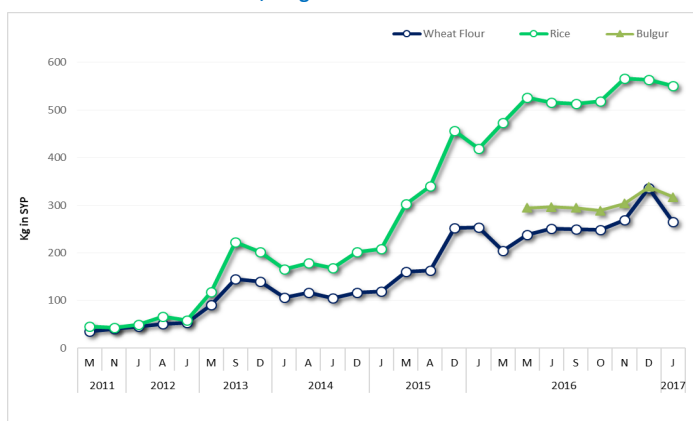
2- Bread:

In January 2017, the average nominal retail prices for public (subsidized) bread and commercial (shop) bread were SYP 79/bundle and SYP 141/bundle, respectively. Compared to December 2016, the price of public and shop bread decreased by 21 percent and 25 percent, respectively. The notable decreases for both bread types were mainly due to the better fuel availability/bakeries functionality beside improved accessibility to bread in Aleppo, Deir-ez-Zor city and some locations in Rural Damascus.

Between July 2016 and January 2017, the average retail price of public bread declined by seven percent while that of shop bread went up by nine percent.

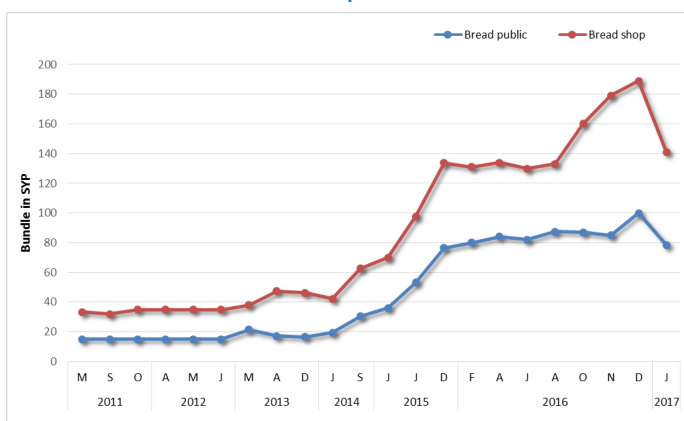
Looking at the pattern for commercial bread across all main markets during January, Idleb market registered the highest price at SYP 290/bundle, which can be arguably attributed to a continuous influx of IDPs to the governorate. Tartous market recorded the lowest price at SYP 65/bundle. Furthermore, better accessibility to bread was reported from Deir-ez-Zor city where a bundle of bread (to each household) was distributed every day via SARC as a part of humanitarian assistance.

Chart 2: Retail Prices of Rice, Bulgur and Wheat Flour in SYP



Source: WFP Field Offices

Chart 3: Retail Prices of Public and Shop Bread in SYP



3– Diesel and cylinder of butane gas

During the reporting month, the average price of a liter of diesel was SYP 329 and a cylinder of butane gas was SYP 4,635. Compared to last month, the average retail prices of diesel significantly decreased by 20 percent and a cylinder of butane gas declined by 29 percent.

Between July 2016 and January 2017, the average retail prices of diesel declined by 15 percent, while that of a cylinder of butane gas remained the same. Compared to the same month last year, diesel and butane gas prices went up slightly by five and three percent, respectively.

In January 2017, the highest price for diesel repetitively recorded in Deir-ez-Zor at SYP 1,340/L , seven fold higher compared to the official price (SYP 180/L).

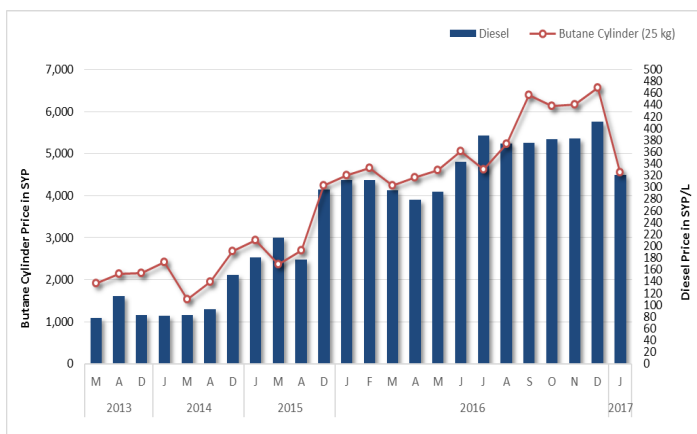
During this month, better fuel availability was reported from many markets including Aleppo and some locations in rural Damascus. This had a remarkable impact on transportation and consequently food commodities prices in numerous markets across the country. However, severe shortage in fuel continues to be an increasing problem in many of the besieged and hard to reach areas.

C. Wholesale Prices of Main Cereal in Damascus Market

During the reporting month, wholesale prices for the main food commodities were relatively similar to December with a slight change in the cost of rice. As illustrated in chart 5, wheat grain price was SYP 8,000/25 kg, bulgur at SYP 7,150/25 kg and white rice at SYP 12,800/25 kg.

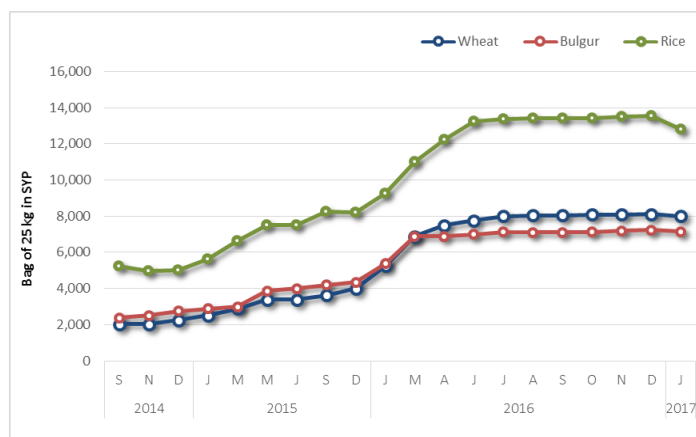
Compared to December 2016, the wholesale prices of bulgur and wheat remained almost unchanged, while the price of rice went down by five percent. Between July 2016 and January 2017, the wholesale prices of rice decreased by four percent, while prices for bulgur and wheat remained unchanged. Year-on-year, the wholesale price of wheat grain increased by 52 percent, bulgur by 33 percent and white rice by 38 percent.

Chart 4: Retail Prices of Diesel and Butane Cylinder in SYP



Source: WFP Field Offices

Chart 5: Wholesale Prices for Wheat, Bulgur and Rice in SYP



D. Food Supply to Markets

During reporting period, the supply routes in all monitored markets of accessible areas including Tartous, As-Sweida, Homs and Damascus were open and functioning normal, markets were accessible and most of essential food commodities were available.

In Al-Hasakeh, Aleppo and some locations in rural Damascus, supply routes functionality was reported to be better compared to last month. Consequently, lower food prices were observed in markets in-line with better availability.

In east Aleppo city, the humanitarian access had positive impact in releasing the pressure on markets, and main supplies prices recorded a significant decrease, compared to last month.

In contrast, markets in besieged Deir-ez-Zor were severely disrupted by escalated offensive and many households were unable to access the markets easily. This, alongside with the decreased frequency of food assistance airdrops had a negative impact on prices/availability of staple food commodities due to increased demand.

E. Terms of Trade (TOT):²

TOT between wage labour and wheat flour

The purchasing power (measured by terms of trade) of casual labourers remains weak across the country reflecting the low wage rates against wheat flour prices. In January 2017, for a whole day of work casual labourers could only buy 5.1 kg of wheat flour/day, a slight increase by two percent compared to the prior month, unchanged compared to six months ago, and a decrease of 18 percent compared to January 2016.

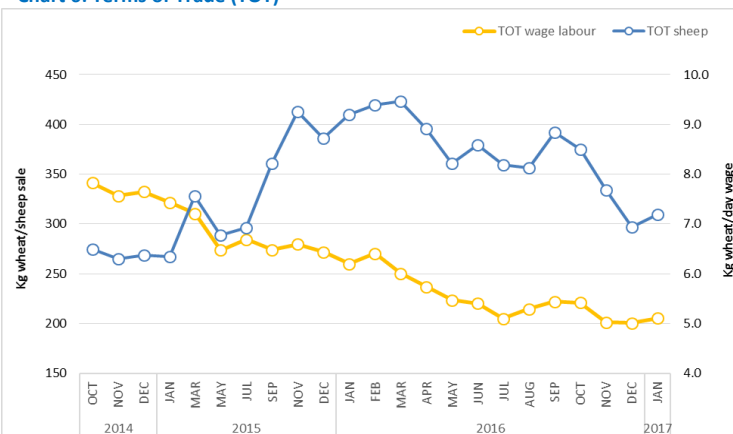
The nominal average daily wage rate during the reporting period was SYP 1,430.

The wage rate varied between different market locations, ranging from SYP 9,00 in Al-Hasakeh to SYP 1,900 in Lattakia.

TOT between sheep and wheat flour

During January, the average price of a two-year old male sheep was SYP 86,635/head. This is four percent more compared to last month but still four percent less compared to six months ago.

Chart 6: Terms of Trade (TOT)



Source: WFP Field Offices

The national average TOT between a sheep and wheat flour was 309kg/sheep, which is higher by four percent compared to last month, but less than July levels by 14 percent.

The highest TOT was recorded in Quneitra governorate (512kg/sheep), while the lowest TOT was observed in Ar-Raqqa governorate (250kg/sheep).

F. International Market Prices

The FAO Food Price Index averaged 174 points in January 2017, up by one percent compared to last month's average, and 16 percent when compared to January 2016 level.

The Cereal Price Index averaged 147 points in this month, up by 3.4 percent compared to last month, but lower than January 2016 level by 1.4 percent.

In January 2017, the wheat prices on local markets averaged USD 621.5/MT, which is four times higher than the price of wheat in the international market (USD 153.3/MT).

Data Source: <http://www.fao.org/worldfoodsituation/wfs-home/foodpricesindex/en/> and https://ycharts.com/indicators/us_hard_red_winter_wheat_export_price_gulf_ports

Chart 7: Trends of food and cereals price indices

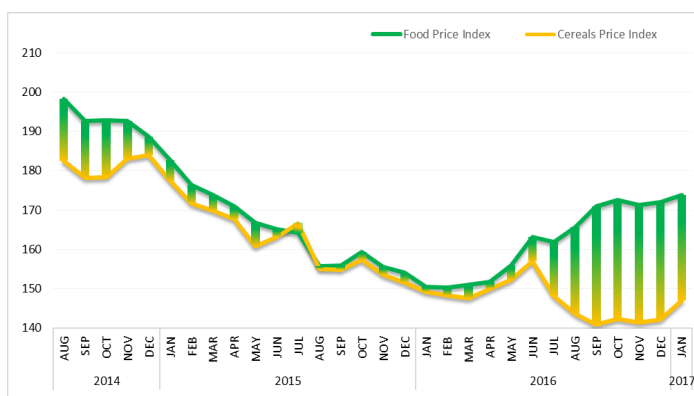
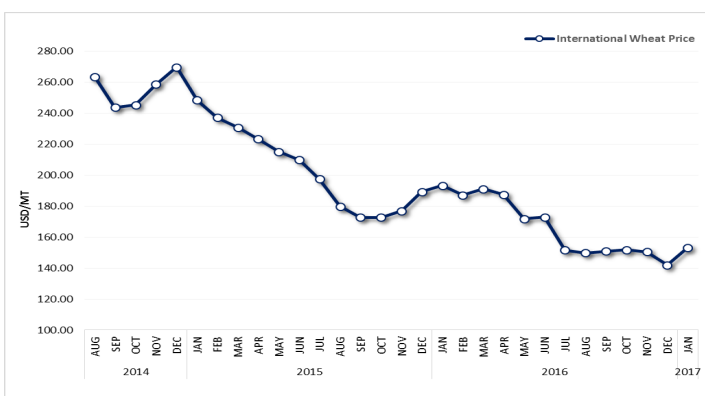


Chart 8: Trends in global wheat prices



2. The TOT are proxy indicators of the purchasing power of households that rely on livestock and/or casual labour as their main source of income for the purchase of cereals from local markets. TOT are important components of food security analysis. Changes in the terms of trade between wages/livestock and staple food commodities are indicative of the trends in purchasing power and the impact on the food security situation of households dependent on food purchases through income from daily wage labour and/or the sale of livestock.

Table 1. Market Price of Main Commodities in Syrian Pounds

Commodity	Governorate	Current Price	Price change (%)	Price change (%)	Average Change	Average Change	Commodity	Governorate	Current Price	Price change (%)	Price change (%)	Average Change	Average Change		
			1M	6 M	1M	6 M					1M	6 M	1M	6 M	
BreadPublic (1.5 kg)	Aleppo	106	(20.7)	11.5	↓	↑	Date (kg)	Aleppo	900	(25.3)	3.1	↓	↔		
	Damascus	50	-	-	↔	↔		Damascus	1,000	2.9	11.3	↔	↑		
	Dar'a	50	-	-	↔	↔		Dar'a	950	-	14.1	↔	↑		
	Deir-ez-Zor	100	-	(19.4)	↔	↓		Deir-ez-Zor	1,825	18.8	350.0	↑	↑		
	Idleb	250	-	42.9	↔	↑		Idleb	450	-	12.5	↔	↑		
	Hama	63	(5.0)	(5.0)	↔	↔		Hama	950	-	13.9	↔	↑		
	Al- Hasakeh	50	-	-	↔	↔		Al- Hasakeh	600	8.3	37.5	↔	↑		
	Homs	50	-	(10.9)	↔	↓		Homs	850	(5.6)	7.0	↔	↔		
	Lattakia	50	-	-	↔	↔		Lattakia	800	-	12.6	↔	↑		
	Quneitra	75	(4.5)	(4.5)	↔	↔		Quneitra	975	5.0	11.1	↔	↑		
	Ar-Raqqa	100	-	(8.3)	↔	↔		Ar-Raqqa	500	(1.9)	39.4	↔	↑		
	Rural Damascus	50	-	(40.0)	↔	↓		Rural Damascus	1,350	-	51.3	↔	↑		
	As-Sweida	50	-	-	↔	↔		As-Sweida	975	5.4	8.3	↔	↔		
	Tartous	50	-	-	↔	↔		Tartous	775	3.1	9.6	↔	↔		
Bread Shops (1.5 kg)	Aleppo	205	(19.3)	102.0	↓	↑	Diesel (L)	Aleppo	278	(22.5)	(20.2)	↓	↓		
	Damascus	150	-	-	↔	↔		Damascus	235	-	7.5	↔	↔		
	Dar'a	150	-	(5.6)	↔	↔		Dar'a	353	-	48.2	↔	↑		
	Deir-ez-Zor	138	(6.3)	(20.8)	↔	↓		Deir-ez-Zor	1,338	(3.9)	(13.1)	↔	↓		
	Idleb	288	-	43.8	↔	↑		Idleb	363	3.6	64.9	↔	↑		
	Hama	107	(6.1)	(15.7)	↔	↓		Hama	305	5.0	28.9	↔	↑		
	Al- Hasakeh	125	11.3	47.9	↑	↑		Al- Hasakeh	85	36.7	53.3	↑	↑		
	Homs	142	(3.5)	13.5	↔	↑		Homs	198	(2.2)	13.5	↔	↑		
	Lattakia	75	-	8.7	↔	↔		Lattakia	190	-	5.6	↔	↔		
	Quneitra	133	-	-	↔	↔		Quneitra	273	(1.4)	4.5	↔	↔		
	Ar-Raqqa	130	-	(23.4)	↔	↓		Ar-Raqqa	176	12.5	30.9	↑	↑		
	Rural Damascus	150	-	(29.2)	↔	↓		Rural Damascus	300	(6.3)	(36.9)	↔	↓		
	As-Sweida	75	-	-	↔	↔		As-Sweida	325	(3.6)	-	↔	↔		
	Tartous	63	-	(6.7)	↔	↔		Tartous	185	-	1.4	↔	↔		
Bulgur (kg)	Aleppo	231	(21.7)	(5.4)	↓	↔	Fish (Sardine, canned)	Aleppo	267	(17.5)	4.4	↓	↔		
	Damascus	293	-	5.0	↔	↔		Damascus	350	-	11.6	↔	↑		
	Dar'a	200	-	-	↔	↔		Dar'a	250	-	-	↔	↔		
	Deir-ez-Zor	925	46.9	17.5	↑	↑		Deir-ez-Zor	831	3.1	(10.7)	↔	↓		
	Idleb	225	-	50.0	↔	↑		Idleb	255	(4.7)	(21.5)	↔	↓		
	Hama	312	0.8	23.6	↔	↑		Hama	247	-	13.7	↔	↑		
	Al- Hasakeh	406	(4.3)	21.4	↔	↑		Al- Hasakeh	313	-	9.3	↔	↔		
	Homs	257	(0.7)	27.9	↔	↑		Homs	252	-	17.8	↔	↑		
	Lattakia	275	(0.6)	12.7	↔	↑		Lattakia	257	6.2	11.4	↔	↑		
	Quneitra	220	(2.5)	20.4	↔	↑		Quneitra	245	-	8.9	↔	↔		
	Ar-Raqqa	300	-	(28.2)	↔	↓		Ar-Raqqa	288	(3.6)	(3.6)	↔	↔		
	Rural Damascus	313	1.7	(15.6)	↔	↓		Rural Damascus	288	-	(28.5)	↔	↓		
	As-Sweida	300	-	9.1	↔	↔		As-Sweida	275	-	-	↔	↔		
	Tartous	300	-	2.9	↔	↔		Tartous	337	3.6	28.6	↔	↑		
Butane Cylinder (10 kg)	Aleppo	4,175	(15.9)	(7.6)	↓	↔	Fish (tuna, canned)	Aleppo	348	(21.8)	(15.6)	↓	↓		
	Damascus	3,000	4.8	20.0	↔	↑		Damascus	463	-	1.2	↔	↔		
	Dar'a	5,350	(1.5)	18.4	↔	↑		Dar'a	400	-	-	↔	↔		
	Deir-ez-Zor	9,000	-	(18.4)	↔	↓		Deir-ez-Zor	1,300	-	26.7	↔	↑		
	Idleb	7,800	(1.3)	41.8	↔	↑		Idleb	300	-	(14.3)	↔	↓		
	Hama	4,433	8.9	48.6	↔	↑		Hama	467	3.6	19.1	↔	↑		
	Al- Hasakeh	2,700	(8.4)	(51.4)	↔	↓		Al- Hasakeh	450	2.9	50.0	↔	↑		
	Homs	2,933	-	21.4	↔	↑		Homs	463	2.3	30.1	↔	↑		
	Lattakia	2,675	(6.1)	(4.5)	↔	↔		Lattakia	350	(3.3)	7.7	↔	↔		
	Quneitra	5,475	2.5	18.8	↔	↑		Quneitra	335	1.4	2.9	↔	↔		
	Ar-Raqqa	7,150	(1.7)	(33.9)	↔	↓		Ar-Raqqa	415	1.1	20.4	↔	↑		
	Rural Damascus	3,750	(9.1)	(45.0)	↔	↓		Rural Damascus	450	-	(10.0)	↔	↔		
	As-Sweida	3,200	3.3	15.4	↔	↑		As-Sweida	425	(2.8)	3.1	↔	↔		
	Tartous	3,250	(6.7)	16.0	↔	↑		Tartous	369	(1.6)	(3.3)	↔	↔		
Cheese (kg)	Aleppo	1,522	(21.0)	(16.4)	↓	↓	Iodised salt (kg)	Aleppo	127	(15.2)	41.8	↓	↑		
	Damascus	1,500	(3.1)	63.2	↔	↑		Damascus	125	-	-	↔	↔		
	Dar'a	1,225	2.6	44.4	↔	↑		Dar'a	175	-	-	↔	↔		
	Deir-ez-Zor	2,200	(2.0)	77.8	↔	↑		Deir-ez-Zor	438	20.5	-	↑	↔		
	Idleb	900	-	-	↔	↔		Idleb	-	-	-	↔	↔		
	Hama	1,583	5.6	23.8	↔	↑		Hama	112	22.2	19.5	↑	↑		
	Al- Hasakeh	1,200	5.0	20.2	↔	↑		Al- Hasakeh	88	-	-	↔	↔		
	Homs	1,267	(2.6)	13.2	↔	↑		Homs	128	12.1	74.4	↑	↑		
	Lattakia	1,350	(1.7)	2.9	↔	↔		Lattakia	53	(4.2)	-	↔	↔		
	Quneitra	1,100	4.5	26.7	↔	↑		Quneitra	105	-	-	↔	↔		
	Ar-Raqqa	1,225	34.5	71.6	↑	↑		Ar-Raqqa	93	0.1	-	↔	↔		
	Rural Damascus	1,450	14.0	26.9	↑	↑		Rural Damascus	138	-	-	↔	↔		
	As-Sweida	1,400	7.7	40.0	↔	↑		As-Sweida	150	-	-	↔	↔		
	Tartous	1,350	5.9	16.3	↔	↑		Tartous	70	(3.6)	-	↔	↔		
Chickpeas (kg)	Aleppo	375	(2.9)	5.7	↔	↔	Lentils (kg)	Aleppo	523	(19.3)	(10.9)	↓	↓		
	Damascus	513	-	(15.4)	↔	↓		Damascus	700	-	3.8	↔	↔		
	Dar'a	350	-	26.7	↔	↑		Dar'a	450	4.3	12.5	↔	↑		
	Deir-ez-Zor	1,113	(7.2)	(2.2)	↔	↔		Deir-ez-Zor	2,063	19.4	17.4	↑	↑		
	Idleb	288	3.6	15.0	↔	↑		Idleb	488	2.6	(2.5)	↔	↔		
	Hama	548	8.4	31.7	↔	↑		Hama	637	0.8	18.4	↔	↑		
	Al- Hasakeh	650	(5.4)	4.2	↔	↔		Al- Hasakeh	594	(6.8)	(24.9)	↔	↓		
	Homs	550	3.0	28.1	↔	↑		Homs	590	(1.4)	19.0	↔	↑		
	Lattakia	612	2.3	4.0	↔	↔		Lattakia	644	(3.4)	7.3	↔	↔		
	Quneitra	488	2.8	9.4	↔	↔		Quneitra	513	-	4.2	↔	↔		
	Ar-Raqqa	613	(1.9)	6.6	↔	↔		Ar-Raqqa	550	(11.3)	(32.2)	↓	↓		
	Rural Damascus	575	5.8	(14.8)	↔	↓		Rural Damascus	725	(4.5)	(4.3)	↔	↔		
	As-Sweida	675	4.2	23.3	↔	↑		As-Sweida	875	6.1	22.8	↔	↑		
	Tartous	525	-	(9.1)	↔	↔		Tartous	600	-	(2.0)	↔	↔		
Key:	↑ ↔	Prices Increase above normal price fluctuation Normal Price Fluctuation													

Commodity Price and Change Data (Q1-Q2 2024)													
Commodity	Governorate	Current Price	Price change (%)	Price change (%)	Average Change	Average Change	Commodity	Governorate	Current Price	Price change (%)	Price change (%)	Average Change	Average Change
			1M	6 M	1M	6 M				1M	6 M	1M	6 M
Meat (beef, kg)	Aleppo	3,413	(6.6)	30.8	↔	↑	Tea (kg)	Aleppo	3,431	(18.7)	6.0	↓	↔
	Damascus	3,350	-	1.6	↔	↔		Damascus	3,375	-	(1.8)	↔	↔
	Dar'a	3,350	-	3.3	↔	↔		Dar'a	18,500	(2.9)	428.6	↔	↑
	Deir-ez-Zor	5,300	22.9	17.3	↑	↑		Deir-ez-Zor	12,450	18.5	19.5	↑	↑
	Idleb	2,800	-	14.3	↔	↑		Idleb	3,350	-	1.6	↔	↔
	Hama	3,750	(3.6)	13.1	↔	↑		Hama	3,833	3.6	10.0	↔	↔
	Al- Hasakeh	2,525	(0.9)	(9.7)	↔	↔		Al- Hasakeh	3,475	0.8	14.7	↔	↑
	Homs	3,700	5.5	27.2	↔	↑		Homs	3,267	(2.4)	39.9	↔	↑
	Lattakia	3,400	2.6	0.7	↔	↔		Lattakia	2,850	6.1	13.1	↔	↑
	Quneitra	3,250	(0.8)	12.3	↔	↑		Quneitra	3,500	-	1.0	↔	↔
	Ar-Raqqa	2,250	(4.5)	(10.0)	↔	↔		Ar-Raqqa	3,350	(7.5)	(11.7)	↔	↓
	Rural Damascus	3,550	-	(3.7)	↔	↔		Rural Damascus	3,650	(2.7)	(6.8)	↔	↔
	As-Sweida	3,400	2.3	(1.4)	↔	↔		As-Sweida	3,250	(7.8)	-	↔	↔
	Tartous	3,475	1.1	3.0	↔	↔		Tartous	2,500	(4.5)	(19.7)	↔	↓
Oil (L)	Aleppo	713	(23.1)	11.2	↓	↑	Tomato paste (kg)	Aleppo	1,268	(10.4)	66.3	↓	↑
	Damascus	750	-	8.5	↔	↔		Damascus	850	1.7	21.4	↔	↑
	Dar'a	725	-	0.2	↔	↔		Dar'a	525	28.2	80.0	↑	↑
	Deir-ez-Zor	2,438	(0.3)	10.7	↔	↑		Deir-ez-Zor	3,100	(6.9)	50.0	↔	↑
	Idleb	650	(1.9)	10.7	↔	↑		Idleb	350	-	16.7	↔	↑
	Hama	775	(2.6)	(10.1)	↔	↓		Hama	1,025	(5.8)	3.0	↔	↔
	Al- Hasakeh	614	(1.5)	(20.3)	↔	↓		Al- Hasakeh	581	(3.1)	(6.3)	↔	↔
	Homs	683	1.2	59.1	↔	↑		Homs	1,075	2.7	23.1	↔	↑
	Lattakia	732	(5.0)	4.3	↔	↔		Lattakia	757	0.9	25.4	↔	↑
	Quneitra	788	-	12.8	↔	↑		Quneitra	425	(2.4)	-	↔	↔
	Ar-Raqqa	813	(4.3)	(16.3)	↔	↓		Ar-Raqqa	613	-	(12.9)	↔	↓
	Rural Damascus	863	(1.5)	5.0	↔	↔		Rural Damascus	900	6.3	40.0	↔	↑
	As-Sweida	800	-	-	↔	↔		As-Sweida	500	-	5.3	↔	↔
	Tartous	725	(1.7)	8.3	↔	↔		Tartous	700	(1.9)	17.6	↔	↑
Parsley (packet)	Aleppo	137	(32.7)	210.6	↓	↑	Tomatoe (kg)	Aleppo	246	(8.8)	73.9	↔	↑
	Damascus	50	-	80.1	↔	↑		Damascus	288	39.6	59.4	↑	↑
	Dar'a	38	-	-	↔	↔		Dar'a	250	-	-	↔	↔
	Deir-ez-Zor	150	-	100.0	↔	↑		Deir-ez-Zor	1,463	(5.7)	62.3	↔	↑
	Idleb	50	-	-	↔	↔		Idleb	500	-	-	↔	↔
	Hama	50	-	7.6	↔	↔		Hama	217	4.8	49.4	↔	↑
	Al- Hasakeh	138	83.3	175.0	↑	↑		Al- Hasakeh	250	(19.9)	108.3	↓	↑
	Homs	38	(40.8)	(11.7)	↓	↓		Homs	290	40.4	130.6	↑	↑
	Lattakia	42	(17.0)	3.8	↓	↔		Lattakia	205	2.5	35.4	↔	↑
	Quneitra	38	(1.7)	150.0	↔	↑		Quneitra	232	49.1	115.7	↑	↑
	Ar-Raqqa	94	10.4	43.8	↑	↑		Ar-Raqqa	415	(7.5)	25.8	↔	↑
	Rural Damascus	62	11.3	53.0	↑	↑		Rural Damascus	344	52.9	27.6	↑	↑
	As-Sweida	75	18.2	132.1	↑	↑		As-Sweida	288	43.8	43.8	↑	↑
	Tartous	45	(8.1)	36.4	↔	↑		Tartous	250	14.2	44.1	↑	↑
Pasta (kg)	Aleppo	469	(5.9)	100.0	↔	↑	Unskilled Labor wage	Aleppo	1,600	16.3	53.3	↑	↑
	Damascus	500	-	-	↔	↔		Damascus	1,500	-	-	↔	↔
	Dar'a	525	10.6	-	↑	↔		Dar'a	1,050	-	11.9	↔	↑
	Deir-ez-Zor	1,700	16.7	-	↑	↔		Deir-ez-Zor	1,150	-	12.5	↔	↑
	Idleb	-	-	-	↔	↔		Idleb	1,700	-	(1.7)	↔	↔
	Hama	427	5.1	17.5	↔	↑		Hama	1,517	2.1	29.2	↔	↑
	Al- Hasakeh	320	(5.0)	-	↔	↔		Al- Hasakeh	900	-	-	↔	↔
	Homs	418	4.2	61.7	↔	↑		Homs	1,133	6.1	57.3	↔	↑
	Lattakia	260	1.3	-	↔	↔		Lattakia	1,900	-	11.8	↔	↑
	Quneitra	263	2.6	-	↔	↔		Quneitra	1,250	-	4.2	↔	↔
	Ar-Raqqa	575	(8.0)	-	↔	↔		Ar-Raqqa	1,600	-	(7.5)	↔	↔
	Rural Damascus	600	(4.2)	-	↔	↔		Rural Damascus	1,500	-	-	↔	↔
	As-Sweida	475	-	-	↔	↔		As-Sweida	1,500	-	15.4	↔	↑
	Tartous	282	3.9	-	↔	↔		Tartous	1,650	-	10.0	↔	↑
Rice (kg)	Aleppo	525	(16.2)	8.0	↓	↔	Wheat Flour (kg)	Aleppo	252	(23.4)	27.1	↓	↑
	Damascus	425	-	6.3	↔	↔		Damascus	285	1.9	5.1	↔	↔
	Dar'a	488	-	-	↔	↔		Dar'a	213	-	-	↔	↔
	Deir-ez-Zor	1,175	25.7	19.2	↑	↑		Deir-ez-Zor	595	-	47.5	↔	↑
	Idleb	475	-	5.6	↔	↔		Idleb	213	-	41.7	↔	↑
	Hama	558	9.3	29.8	↔	↑		Hama	258	16.7	45.5	↑	↑
	Al- Hasakeh	750	(8.1)	(8.8)	↔	↔		Al- Hasakeh	263	-	12.2	↔	↑
	Homs	505	2.8	31.7	↔	↑		Homs	232	6.9	26.0	↔	↑
	Lattakia	500	-	5.8	↔	↔		Lattakia	235	(4.3)	3.0	↔	↔
	Quneitra	425	-	(5.6)	↔	↔		Quneitra	205	-	-	↔	↔
	Ar-Raqqa	600	(7.1)	(18.1)	↔	↓		Ar-Raqqa	200	(38.9)	(35.6)	↓	↓
	Rural Damascus	488	(2.3)	(4.2)	↔	↔		Rural Damascus	288	(10.7)	(33.4)	↓	↓
	As-Sweida	325	(5.8)	8.3	↔	↔		As-Sweida	275	5.0	-	↔	↔
	Tartous	525	-	2.4	↔	↔		Tartous	239	2.9	(0.8)	↔	↔
Sheep 2Y old Male	Aleppo	68,906	3.6	(44.3)	↔	↓	White beans (kg)	Aleppo	453	(14.8)	11.1	↓	↑
	Damascus	84,563	(2.4)	(0.8)	↔	↔		Damascus	475	-	-	↔	↔
	Dar'a	69,500	(0.6)	11.0	↔	↑		Dar'a	400	5.6	38.9	↔	↑
	Deir-ez-Zor	N/A	-	-	↔	↔		Deir-ez-Zor	1,525	0.6	(80.6)	↔	↓
	Idleb	77,500	-	3.3	↔	↔		Idleb	-	-	-	↔	↔
	Hama	84,667	0.7	5.8	↔	↔		Hama	600	3.5	23.1	↔	↑
	Al- Hasakeh	75,000	-	9.4	↔	↔		Al- Hasakeh	800	(0.5)	-	↔	↔
	Homs	82,000	1.3	28.3	↔	↑		Homs	540	-	18.7	↔	↑
	Lattakia	72,650	(3.1)	(14.5)	↔	↓		Lattakia	644	(2.0)	-	↔	↔
	Quneitra	105,000	3.6	33.8	↔	↑		Quneitra	393	1.0	-	↔	↔
	Ar-Raqqa	50,000	(11.5)	(35.2)	↓	↓		Ar-Raqqa	775	(8.8)	-	↔	↔
	Rural Damascus	91,875	(0.7)	3.3	↔	↔		Rural Damascus	535	-	-	↔	↔
	As-Sweida	71,500	-	(14.7)	↔	↓		As-Sweida	525	-	-	↔	↔
	Tartous	68,200	0.8	(20.7)	↔	↓		Tartous	532	1.4	-	↔	↔
Sugar (kg)	Aleppo	395	(29.1)	(10.6)	↓	↓	Yogurt (kg)	Aleppo	417	(26.1)	(21.2)	↓	↓
	Damascus	438	2.9	0.8	↔	↔		Damascus	313	-	56.3	↔	↑
	Dar'a	438	-	14.3	↔	↑		Dar'a	250	-	10.0	↔	↑
	Deir-ez-Zor	3,025	25.0	62.5	↑	↑		Deir-ez-Zor	950	1.4	52.1	↔	↑
	Idleb	450	-	4.7	↔	↔		Idleb	213	-	21.4	↔	↑
	Hama	412	(2.9)	7.9	↔	↔		Hama	520	2.1	24.7	↔	↑
	Al- Hasakeh	493	(8.4)	(25.8)	↔	↓		Al- Hasakeh	200	-	5.6	↔	↔
	Homs	377	1.0	62.9	↔	↑		Homs	275	(0.3)	19.8	↔	↑
	Lattakia	388	(7.5)	5.0	↔	↔		Lattakia	268	1.6	32.2	↔	↑
	Quneitra	413	(2.8)	3.0	↔	↔		Quneitra	235	7.1	31.3	↔	↑
	Ar-Raqqa	481	(10.3)	(25.7)	↓	↓		Ar-Raqqa	238	27.7	46.4	↑	↑
	Rural Damascus	450	(9.1)	(10.0)	↔	↔		Rural Damascus	275	(14.0)	5.5	↓	↔
	As-Sweida	400	(5.3)	(20.0)	↔	↓		As-Sweida	275	-	10.0	↔	↑
	Tartous	413	(2.8)	(2.8)	↔	↔		Tartous	275	2.7	16.1	↔	↑