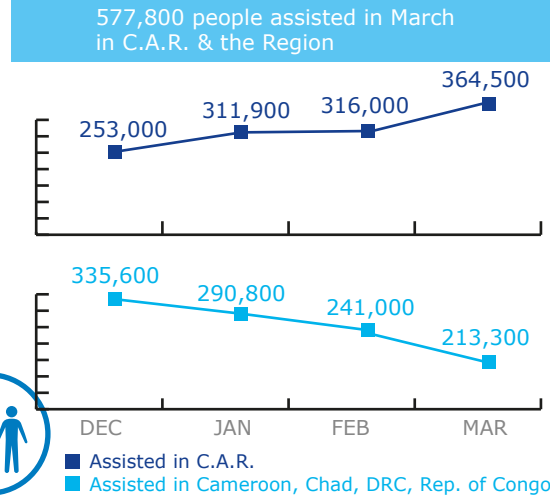
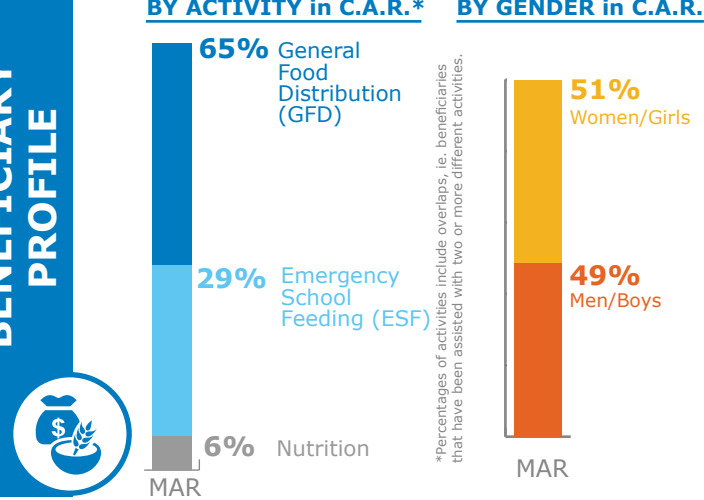


## BENEFICIARIES

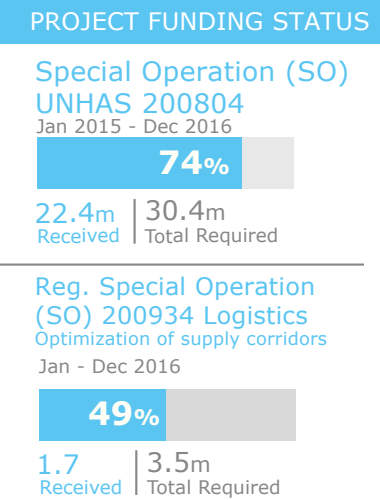
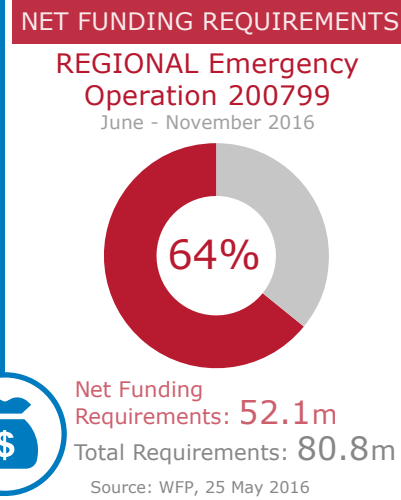
Reg EMOP 200799



## BENEFICIARY PROFILE

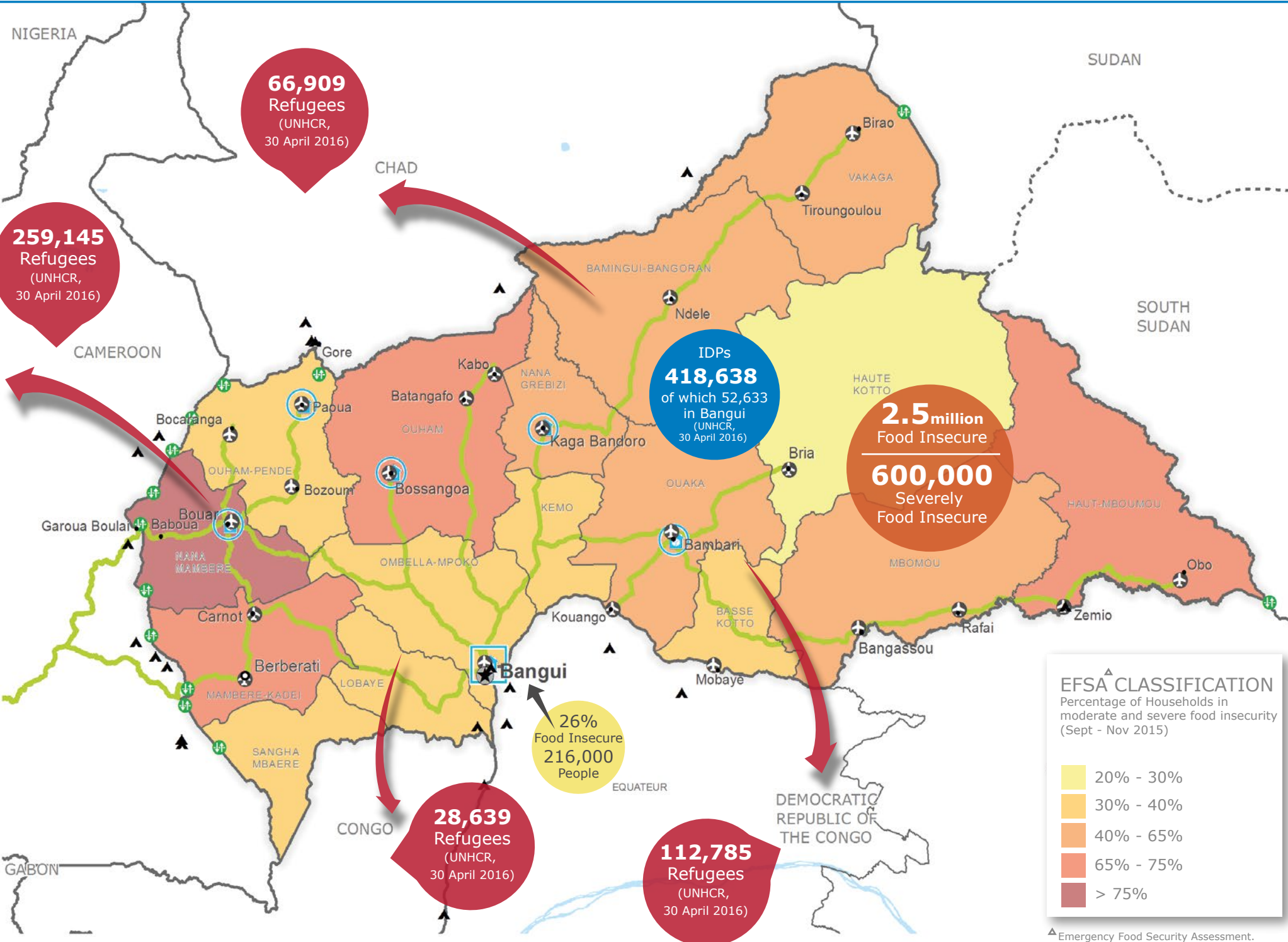


## FUNDING



## OPERATIONAL CHALLENGES

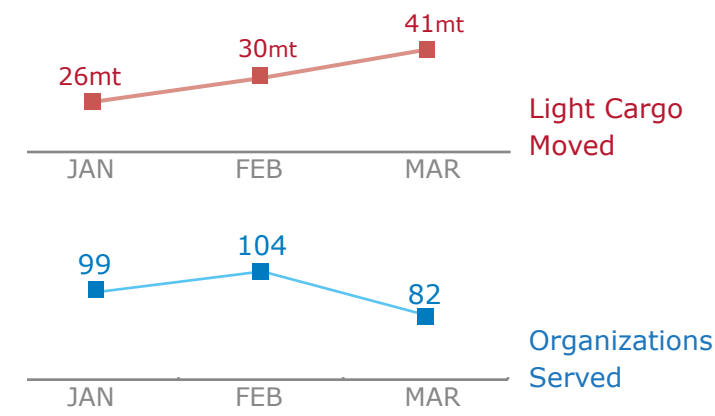
- Insecurity
- Humanitarian Access
- Resources



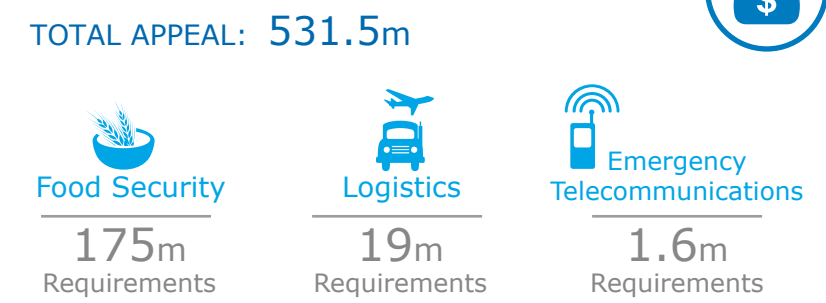
## COMMON SERVICES

### UN Humanitarian Air Service (UNHAS)

Source: WFP, 11 April 2016



## 2016 CAR HUMANITARIAN RESPONSE PLAN REQUIREMENTS



## WFP LEVEL 2 EMERGENCY SINCE 02 JUNE 2015

Check the **COUNTRY BRIEF** and **SITUATION REPORT**  
<http://www.wfp.org/countries/central-african-republic>

Produced by the WFP **Operations Centre (OPSCEN)**  
This dashboard is based on best available information at the time of production. Future updates may vary as new information becomes available.

- Country Office
- Warehouse
- UNHAS Connection
- National Capital
- International Boundary
- Sub Office
- Refugee Camp
- Border Crossing Point
- Major Town
- Province boundary
- Field Office
- Road Supply Route
- Intermediate Town
- River
- Small town
- Surface Waterbody

Sources: WFP, UNGIWG, GAUL, GLCSC, OCHA, UNHCR. The designations employed and the presentation of material in the map(s) do not imply the expression of any opinion on the part of WFP concerning the legal or constitutional status of any country, territory, city or sea, or concerning the delimitation of its frontiers or boundaries. © World Food Programme 2016