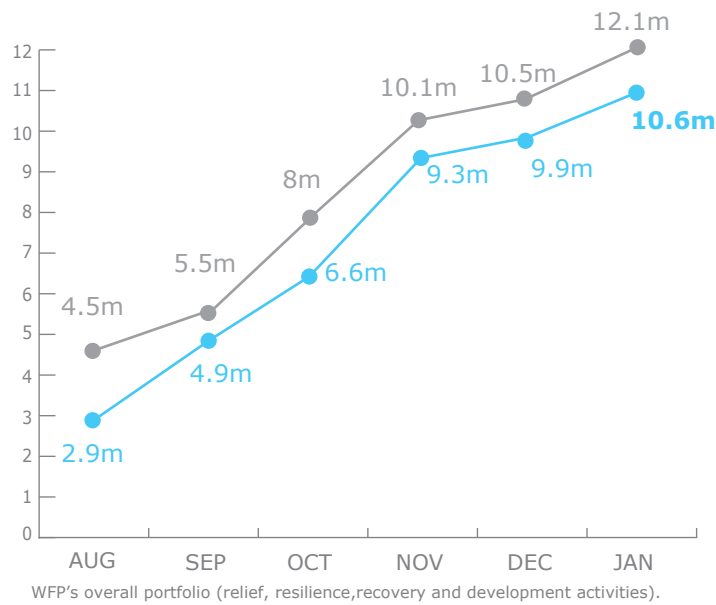


PEOPLE ASSISTED

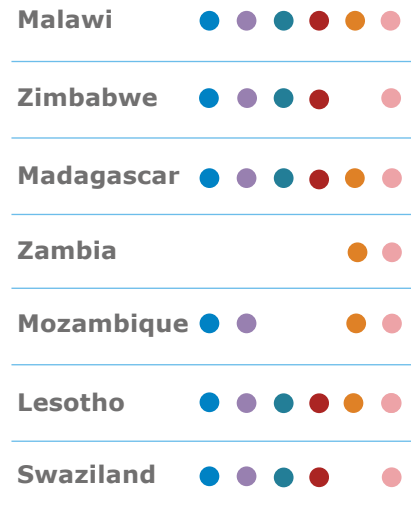


Operational Plan ● Assisted



Source: WFP, 17 February 2017

OPERATIONAL PROFILE



BY ACTIVITY

- General Food Distribution
- Nutrition
- Food for Asset, Cash for asset
- Unconditional Cash Transfers
- School Feeding, Home Grown School Meals
- Capacity and Development

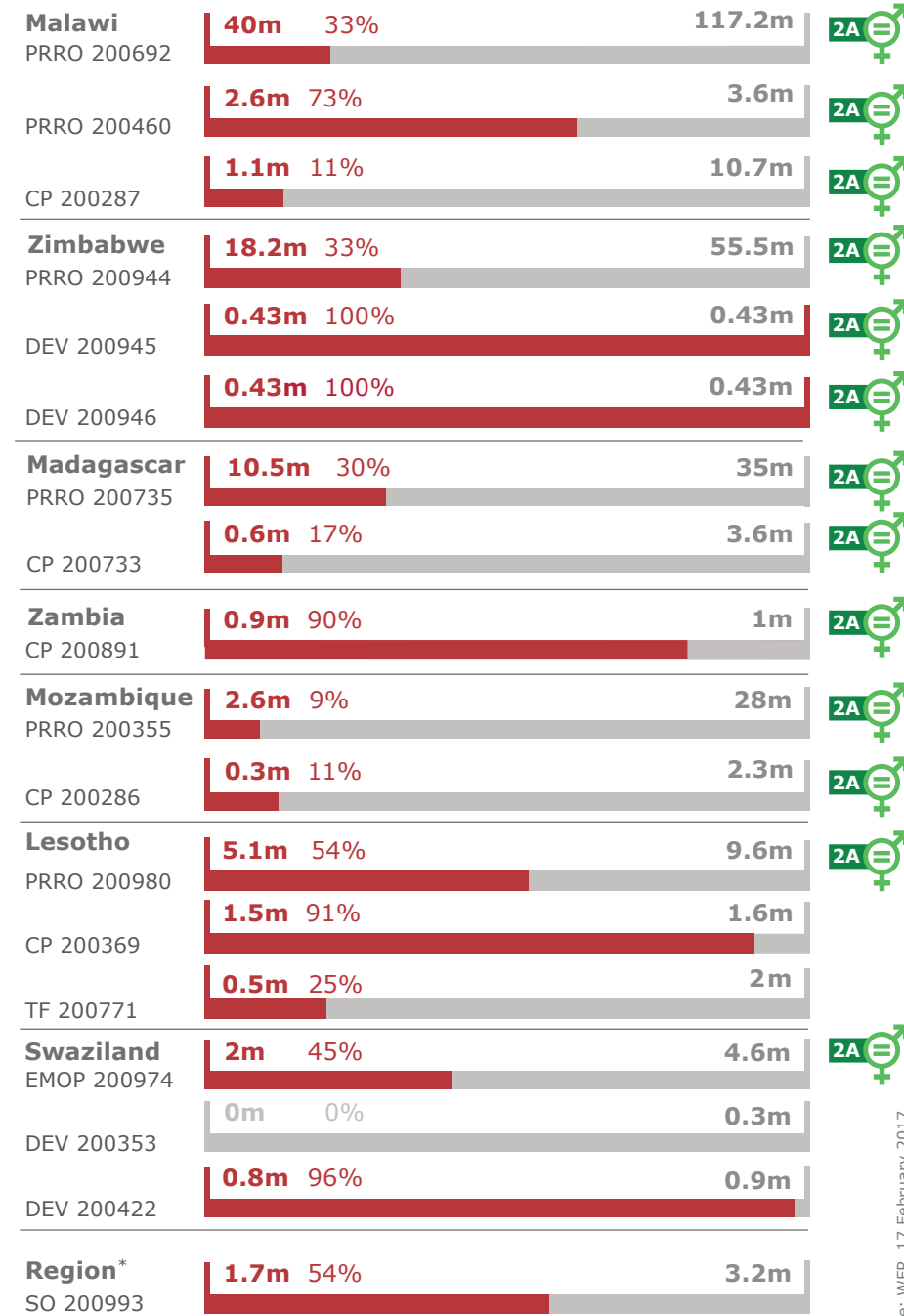
Source: WFP, 17 February 2017

FUNDING

February - April 2017



Shortfall Total Funding Requirements



EMOP: Emergency Operation | CP: Country Program | TF: Trust Fund
 DEV: Development | PRRO: Protracted Relief & Recovery Operation
 ***Regional Special Operation (SO) to augment WFP support to the SADC Secretariat and member states and build up WFP regional bureau capacity in response to the El Niño-related drought. It also aims to support member states in the enhancement of assessments and real-time monitoring.

Source: WFP, September 2016

FOOD PRICE IMPACT



OPERATIONAL CHALLENGES



WFP LEVEL 3 EMERGENCY SINCE 12 JUNE 2016

For more information, see the **SITUATION REPORT** and **COUNTRY BRIEF** www.wfp.org



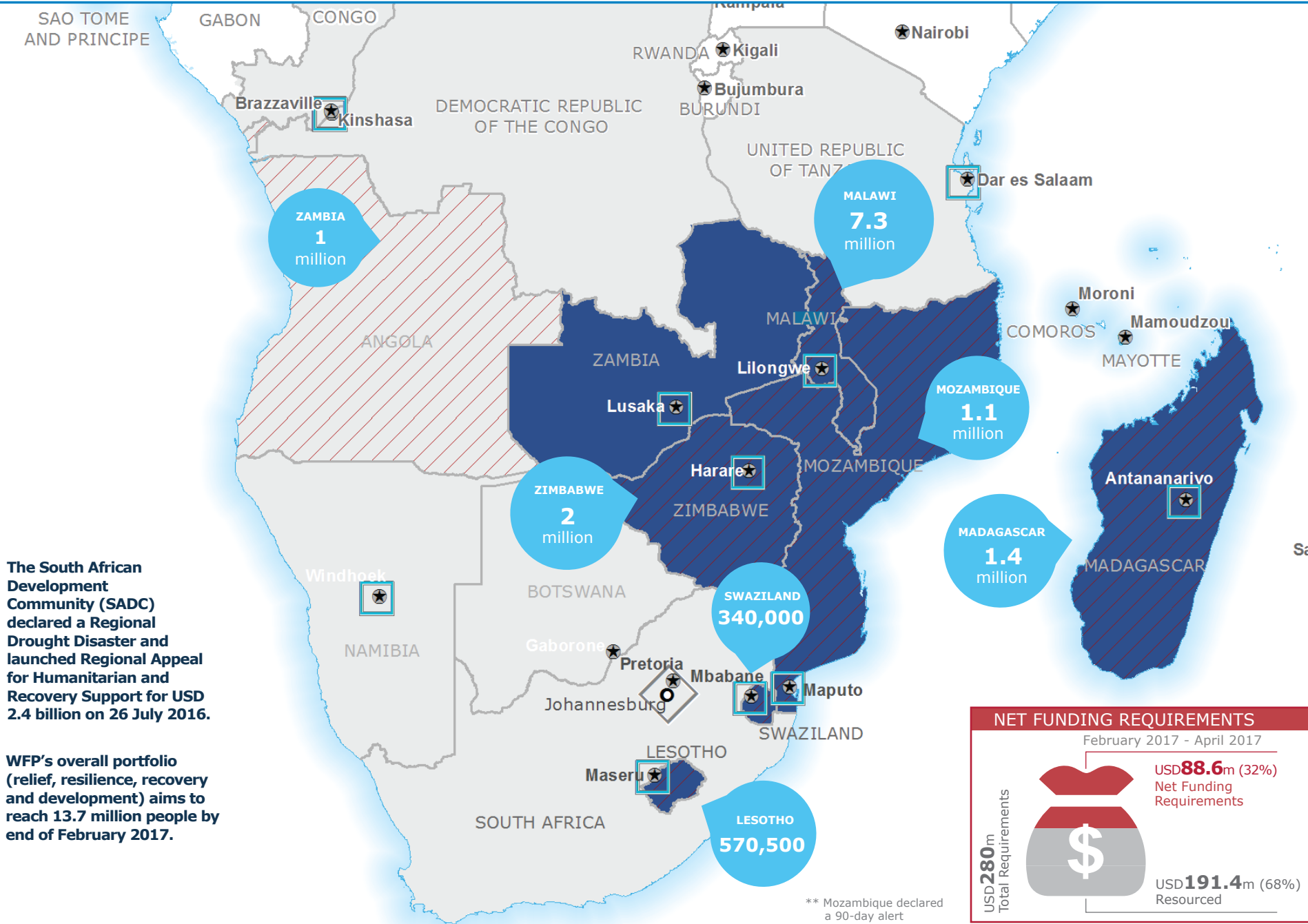
Gender Marker

<http://documents.wfp.org/stellent/groups/public/documents/ep/WFP284303.pdf>

Produced by the WFP **Operations Centre (OPSCEN)** jointly with **Country Office** and **Regional Bureau Johannesburg**

This dashboard is based on best available information at the time of production. Future updates may vary as new information becomes available.

Source: WFP, 17 February 2017



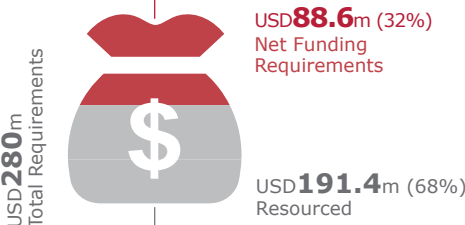
The South African Development Community (SADC) declared a Regional Drought Disaster and launched Regional Appeal for Humanitarian and Recovery Support for USD 2.4 billion on 26 July 2016.

WFP's overall portfolio (relief, resilience, recovery and development) aims to reach 13.7 million people by end of February 2017.

** Mozambique declared a 90-day alert

NET FUNDING REQUIREMENTS

February 2017 - April 2017



Sources: UNGIWG, GAUL, GeoNames, WFP, GFSC
 The designations employed and the presentation of material in the map(s) do not imply the expression of any opinion on the part of WFP concerning the legal or constitutional status of any country, territory, city or sea, or concerning the delimitation of its frontiers or boundaries.
 © World Food Programme 2017

- National Capital
- ◇ Regional Bureau
- WFP L-3 Emergency Countries
- ▨ RIASCO Priority Countries
- International Boundary
- - - Undetermined Boundary
- Major Town
- Country Office
- Supply Route
- River
- Surface Waterbody
- Number of people WFP aims to reach in the country in February 2017 under the overall portfolio (relief, resilience, recovery and development).