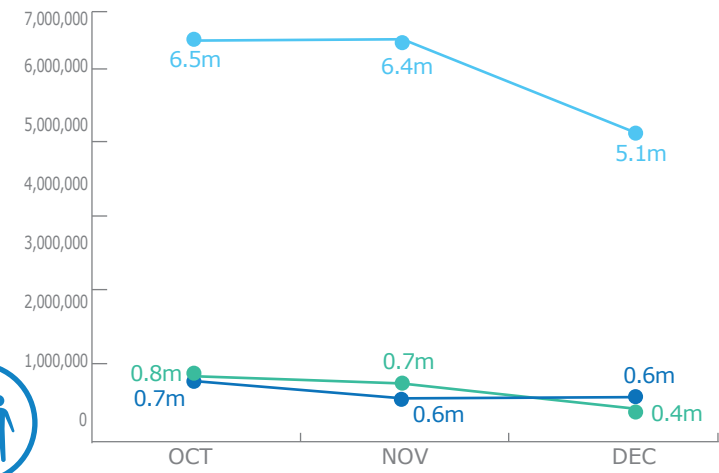


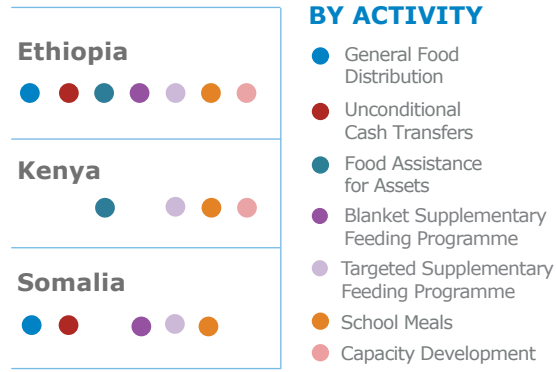
## PEOPLE ASSISTED



● Ethiopia ● Kenya ● Somalia

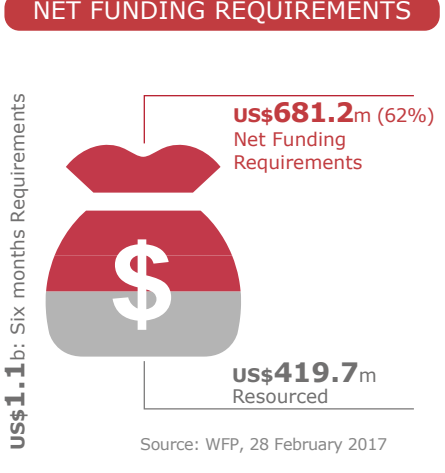


## OPERATIONAL PROFILE



## FUNDING

Feb - July 2017



### FUNDING

February - July 2017

	Net Funding Requirements	Total Requirements
<b>Ethiopia</b>		
PRRO 200712	255.7m 54%	477.7m
PRRO 200700	11.1m 19%	58.9m
DEV 200253	1.5m 76%	2.0m
<b>Kenya</b>		
PRRO 200736	14.7m 35%	42.4m
PRRO 200737	14.4m 28%	51.5m
CP 200680	6.3m 36%	17.5m
<b>Somalia</b>		
PRRO 200844	374.1m 86%	435.6m
SO 200924	3.3m 22%	15.2m

CP: Country Programme | DEV: Development | PRRO: Protracted Relief and Recovery Operation | SO: Special Operation  
Source: WFP, 28 February 2017

### OPERATIONAL CHALLENGES

- Humanitarian Access
- Insecurity
- Resources

### 2017 OVERALL HUMANITARIAN RESPONSE PLANS & CLUSTER REQUIREMENTS

#### ETHIOPIA HUMANITARIAN REQUIREMENTS DOCUMENT 2017

<b>FOOD SECURITY</b>	<b>NUTRITION</b>	<b>TOTAL APPEAL</b>
US\$598m	US\$105.6m	US\$948million

#### SOMALIA OPERATIONAL PLAN FOR FAMINE PREVENTION (JANUARY - JUNE 2017)

<b>FOOD SECURITY</b>	<b>NUTRITION</b>	<b>LOGISTICS</b>	<b>TOTAL APPEAL</b>
US\$350m	US\$200m	US\$6m	US\$825million

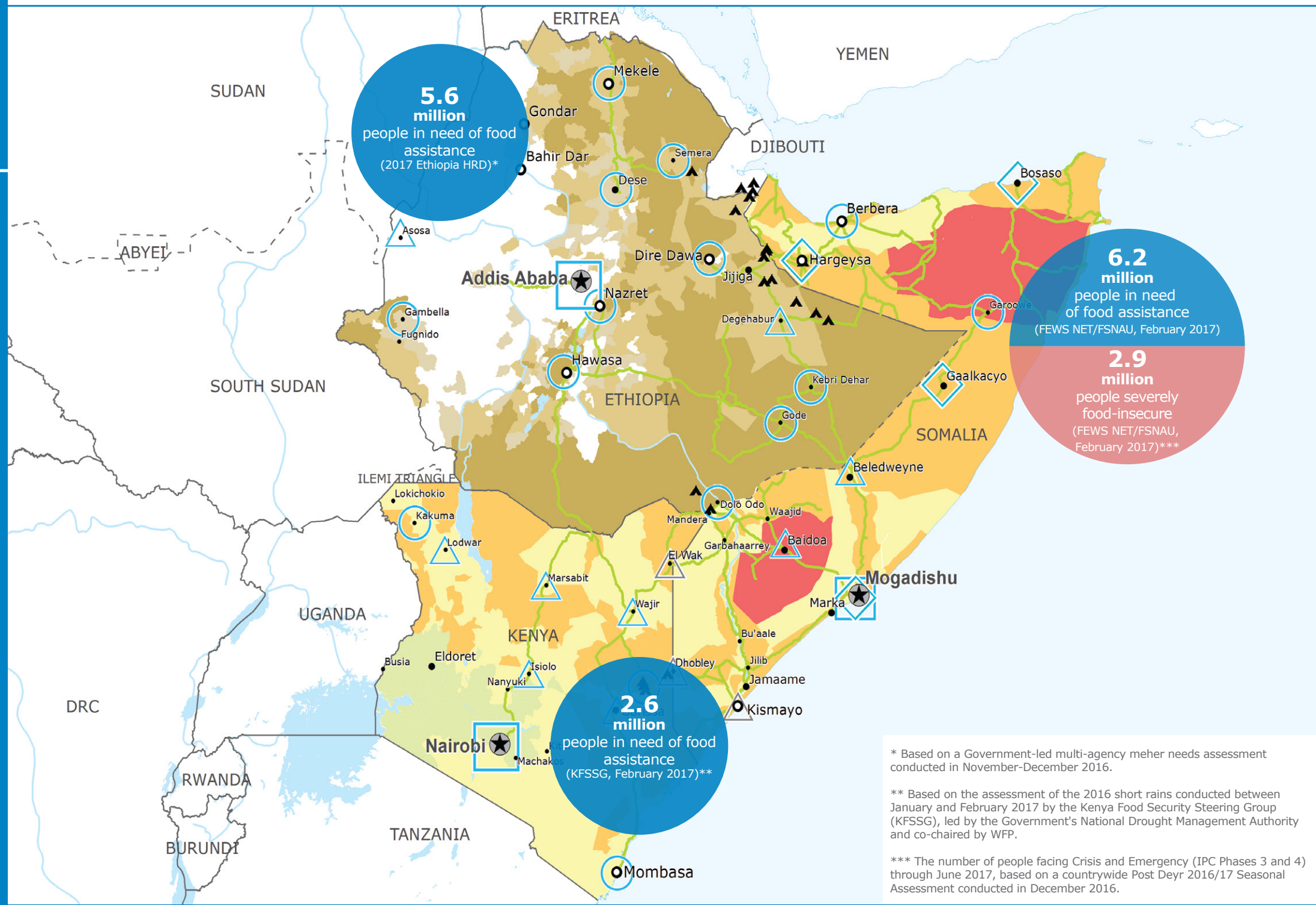
## WFP LEVEL 2 EMERGENCY

SINCE 06 FEBRUARY 2017

For more information, see the **SITUATION REPORT** and **COUNTRY BRIEF** [www.wfp.org](http://www.wfp.org)

**2A Gender Marker**

<http://documents.wfp.org/stellent/groups/public/documents/ep/WFP284303.pdf>



\* Based on a Government-led multi-agency meher needs assessment conducted in November-December 2016.

\*\* Based on the assessment of the 2016 short rains conducted between January and February 2017 by the Kenya Food Security Steering Group (KFSSG), led by the Government's National Drought Management Authority and co-chaired by WFP.

\*\*\* The number of people facing Crisis and Emergency (IPC Phases 3 and 4) through June 2017, based on a countrywide Post Deyr 2016/17 Seasonal Assessment conducted in December 2016.

**Hotspot Woredas (December 2016)**

- Priority 1
- Priority 2
- Priority 3

**IPC Classification\***

- No data
- Minimal
- Stressed
- Crisis
- Emergency
- Famine

**Country Office**

- Country Office
- Area Office

**Sub Office**

- Sub Office
- Field Office
- Presence Office

**National Capital**

- National Capital
- Major Town
- Intermediate Town
- Small Town

**Road Supply Route**

- Road Supply Route
- Refugee Camp
- International Boundary
- Undetermined Boundary

Sources: WFP, UNGIWG, GAUL, GLCSC, UNHCR. The designations employed and the presentation of material in the map(s) do not imply the expression of any opinion on the part of WFP concerning the legal or constitutional status of any country, territory, city or sea, or concerning the delimitation of its frontiers or boundaries. © World Food Programme 2017

This dashboard is based on best available information at the time of production. Future updates may vary as new information becomes available.

