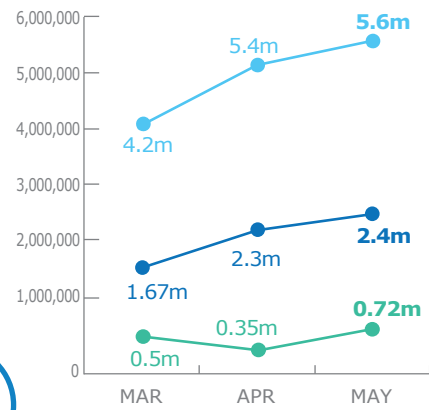
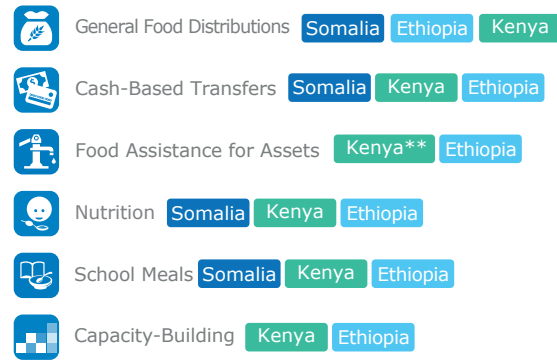


PEOPLE ASSISTED



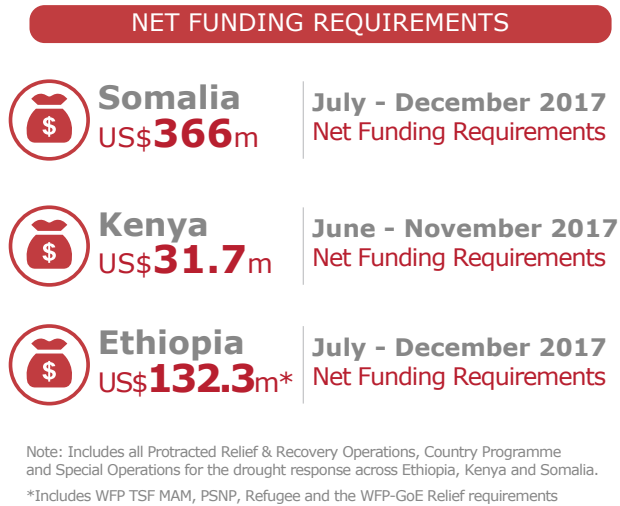
OPERATIONAL PROFILE

RESPONSE ACTIVITIES



**WFP does not provide FFA assistance during the post-harvest months.

FUNDING



Source: WFP, 22 June 2017

2017 HUMANITARIAN RESPONSE PLANS & CLUSTER REQUIREMENTS

SOMALIA HUMANITARIAN RESPONSE PLAN 2017

- FOOD SECURITY: US\$713m
- NUTRITION: US\$276m
- LOGISTICS: US\$15.3m
- OTHERS: US\$505m

TOTAL APPEAL US\$1.5 billion

KENYA FLASH APPEAL 2017

- FOOD SECURITY: US\$39.3m
- NUTRITION: US\$43.2m
- OTHERS: US\$83.2m

TOTAL APPEAL US\$165.7 million

ETHIOPIA HUMANITARIAN REQUIREMENTS DOCUMENT 2017

- FOOD SECURITY: US\$598m
- NUTRITION: US\$105.6m
- OTHERS: US\$244.4m

TOTAL APPEAL US\$948 million

UN Humanitarian Air Service (UNHAS)

SOMALIA AND KENYA

Passengers Transported: 1,812 (FEB), 4,394 (MAR), 3,451 (APR)

Organizations Supported: 74 (FEB), 106 (MAR), 106 (APR)

Source: Logistics Clusters, 19 April 2017

ETHIOPIA

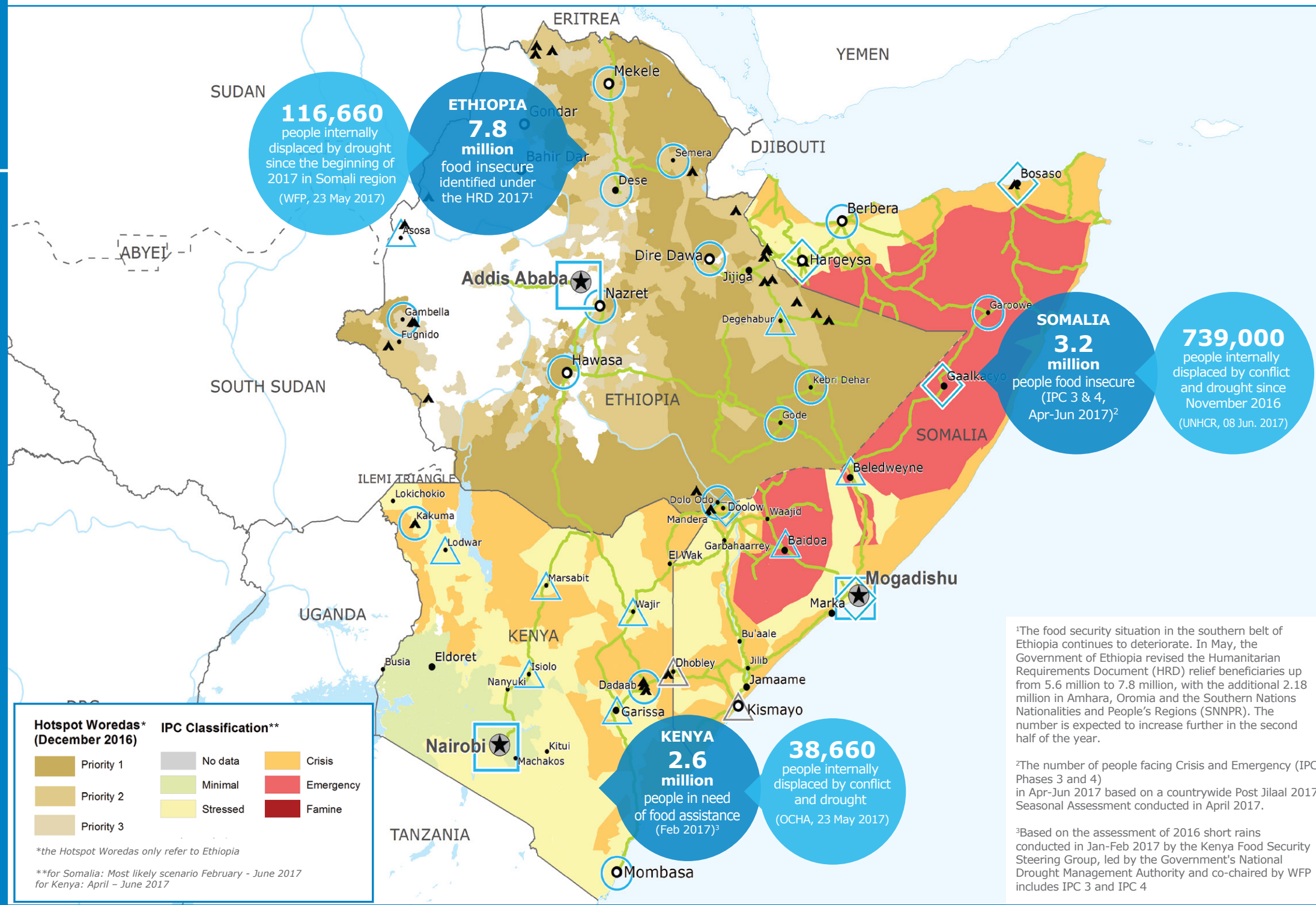
Passengers Transported: 449 (FEB), 487 (MAR), 405 (APR)

Organizations Supported: 27 (FEB), 25 (MAR), 27 (APR)

Source: Logistics Clusters, 19 April 2017

WFP LEVEL 2 EMERGENCY
SINCE 06 FEBRUARY 2017

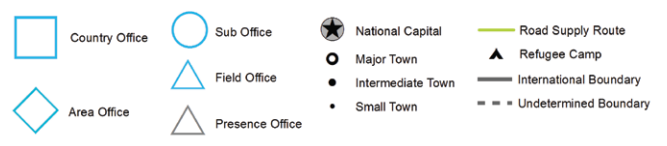
For more information, see the **SITUATION REPORT** and **COUNTRY BRIEF** www.wfp.org



¹The food security situation in the southern belt of Ethiopia continues to deteriorate. In May, the Government of Ethiopia revised the Humanitarian Requirements Document (HRD) relief beneficiaries up from 5.6 million to 7.8 million, with the additional 2.18 million in Amhara, Oromia and the Southern Nations Nationalities and People's Regions (SNNPR). The number is expected to increase further in the second half of the year.

²The number of people facing Crisis and Emergency (IPC Phases 3 and 4) in Apr-Jun 2017 based on a countrywide Post Jilaa 2017 Seasonal Assessment conducted in April 2017.

³Based on the assessment of 2016 short rains conducted in Jan-Feb 2017 by the Kenya Food Security Steering Group, led by the Government's National Drought Management Authority and co-chaired by WFP includes IPC 3 and IPC 4



Sources: WFP, UNGIWG, GAUL, GLCSC, UNHCR
The designations employed and the presentation of material in the map(s) do not imply the expression of any opinion on the part of WFP concerning the legal or constitutional status of any country, territory, city or sea, or concerning the delimitation of its frontiers or boundaries. © World Food Programme 2017

This dashboard is based on best available information at the time of production. Future updates may vary as new information becomes available.