



ZIMBABWE

SECOND ROUND CROP AND LIVESTOCK ASSESSMENT REPORT 2014/15 SEASON

MINISTER OF AGRICULTURE, MECHANISATION AND IRRIGATION DEVELOPMENT, 22 APRIL 2015

TABLE OF CONTENTS

1. EXECUTIVE SUMMARY- CROPS	3
2. CROP PRODUCTION	11
2.1 MAIZE	11
2.2 SORGHUM	20
2.3 PEARL MILLET	24
2.4 FINGER MILLET	28
2.5 SUGARBEANS	32
2.6 GROUNDNUTS	36
2.7 TOBACCO	40
2.8 COTTON	44
2.9 OTHER CROPS	48
3 EXECUTIVE SUMMARY-LIVESTOCK.....	51
4 LIVESTOCK PRODUCTION	52
4.1 LIVESTOCK PRODUCTIVITY	52
4.2 CATTLE SLAUGHTERS AND MEAT PRODUCTION	53
4.3 SMALL LIVESTOCK SLAUGHTER	54
4.4 POULTRY PRODUCTION	58
4.5 GRAZING AND STOCK FEED AVAILABILITY	59
4.6 WATER AVAILABILITY	60
4.7 VELD FIRES	61
5 LIVESTOCK HEALTH SITUATION.....	63
5.1 VACCINATIONS	64
5.2 FOOT AND MOUTH DISEASE	67
5.3 RABIES	68
5.4 NEWCASTLE DISEASE	71
5.5 ANTHRAX	73
5.7 LUMPY SKIN DISEASE	79

1. EXECUTIVE SUMMARY- CROPS

TABLE 1: FOOD CROP PRODUCTION ESTIMATES (MT)

CROP	2014/15	2013/14	%
Maize	742 226	1 456 153	-49
Sorghum	39 746	136 544	-71
Pearl Millet	22 387	76 587	-71
Finger Millet	4 470	11 009	-59
Irish Potatoes	417 480	397 600	5
Sweet Potatoes	218 737	335 335	-35
Groundnuts	88 886	135 138	-34
Roundnuts	36 568	49 429	-26
Sugar Beans	12 601	20 119	-37
Rice	174	417	-58
Cowpeas	13 505	25 053	-46
Cucurbits(<i>Pumpkins, Squash, Marrows, Melons and Butternuts</i>)	35 775	33 750	6
Cabbages and Leaf Vegetables	349 800	330 000	6
Tomato	334 950	283 500	18
Onion	160 650	157 500	2

FIGURE 1: FOOD CROP PRODUCTION ESTIMATES (MT)

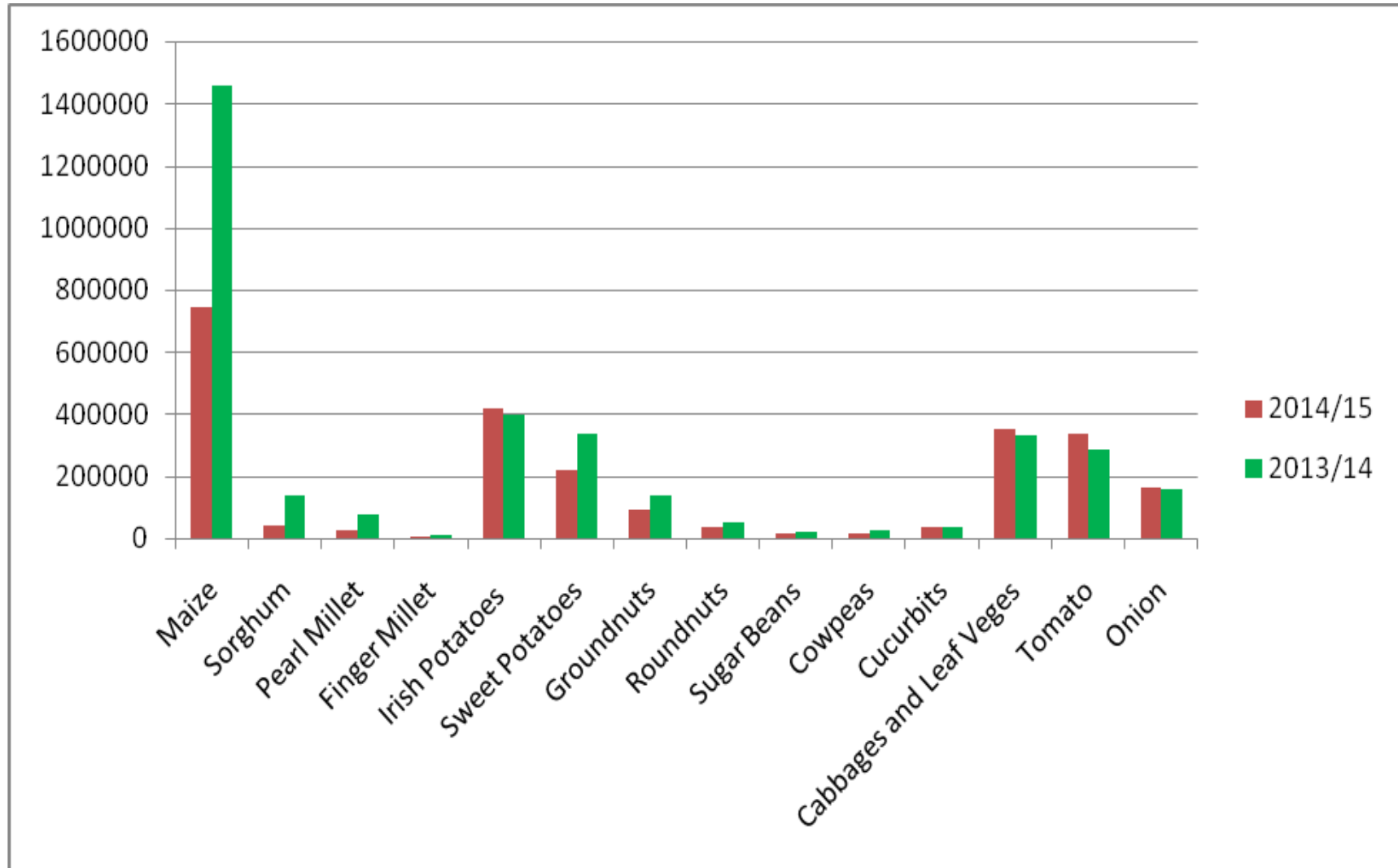


TABLE 2: CEREAL GRAIN, TUBERS, PULSES AND OTHER CROPS PRODUCTION COMPARED TO NATIONAL REQUIREMENTS (MT)

Crop	Requirements (MT)	Available Food Production (MT)	Surplus/Deficits (MT)
¹ Cereal (Maize, sorghum, pearl and finger millet)	1 458 688	808 829	-649 859
³ Irish Potato	265 216	417 480	152 264
³ Sweet Potatoes	278 477	218 737	-59 740
³ Groundnut	92 826	91 398	-1 428
³ Roundnut	119 347	37 805	-81 542
³ Sugarbean	92 826	12 772	-80 054
³ Cowpeas	79 565	13 519	-66 046
³ Cucurbits (Pumpkins, Squash and Marrows, Melons and Watermelons)	26 522	35 775	9 253
Total	2 413 467	1 636 615	-777 152

¹The above requirements are for human consumption. Cereal requirements for livestock are estimated at **350 000Mt.**

²Cereal requirement is computed from a consumptions rate of 110kg/year and a national population (2012 Census factoring in growth rate) of 13 260 802.

³Other crops requirement is based on 2100Kcal requirement per person per day and calculated from the ZimVac Household Economy Approach Baseline Survey 2009/10 for 25 Livelihood Zones across Zimbabwe. Irish potato 20kg/person/year, Groundnuts 7kg/person/year, Roundnuts 9kg/person/year, Sweet potato 21kg/person/year, Sugarbeans 7kg/person/year, Cowpeas 6kg/person/year, Cucurbits 2kg/person/year

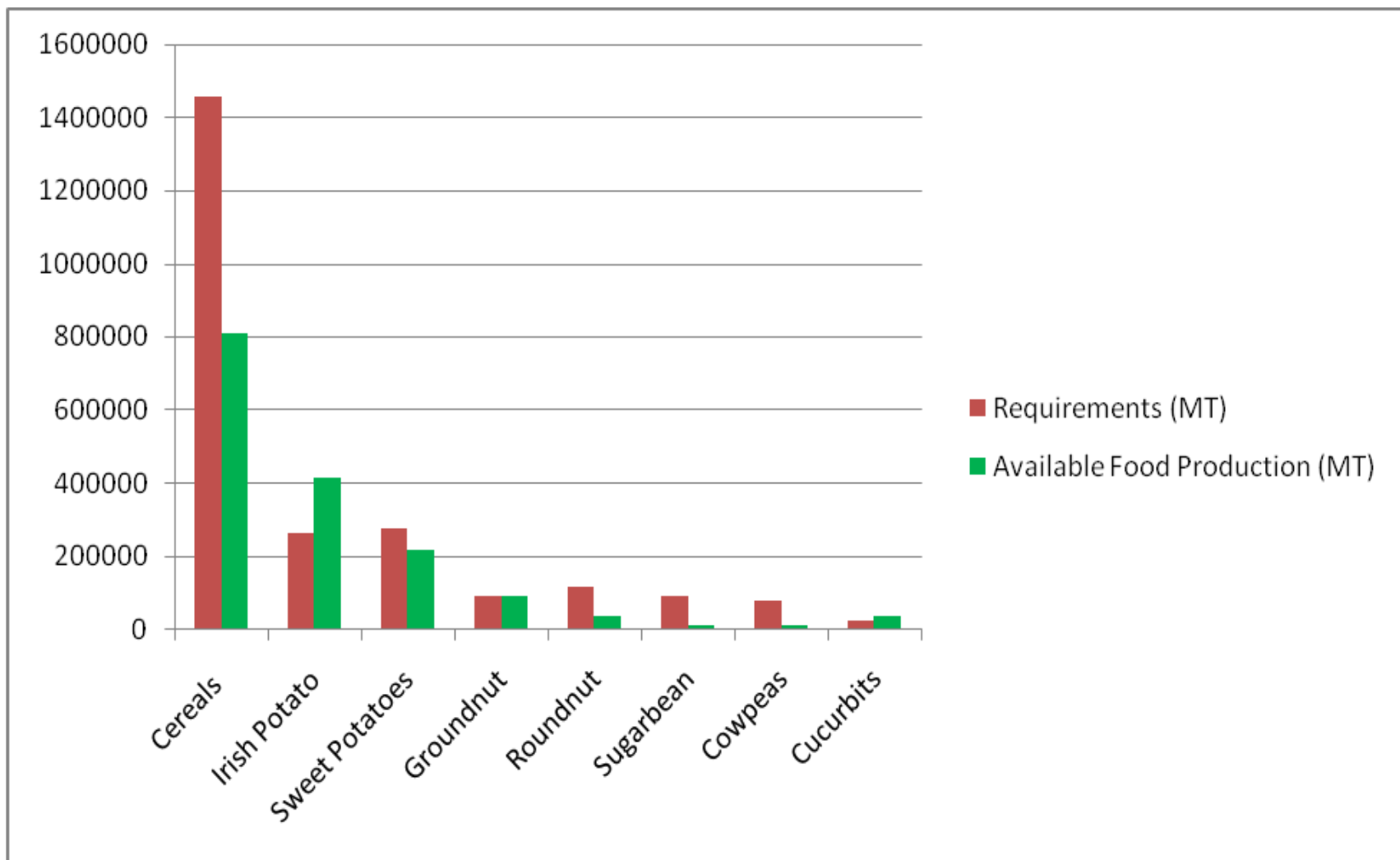
FIGURE 2: CEREAL GRAIN, TUBERS, PULSES AND OTHER CROPS PRODUCTION COMPARED TO NATIONAL REQUIREMENTS

TABLE 3: CEREAL SURPLUS/DEFICIENCY BY PROVINCE

Province	Population	Production(Mt)					Mt	
		Maize	Sorghum	Pearl millet	Finger millet	Total	Requirement	Surplus/deficit
Manicaland	1 793 827	89 384	5 618	5 050	1 266	101 318	197 321	-96 003
Mashonaland Central	1 169 764	190 117	13 841	777	171	204 906	128 674	76 232
Mashonaland East	1 377 470	102 978	3 329	513	513	107 333	151 522	-44 189
Mashonaland West	1 499 654	215 827	3 045	17	69	218 958	164 962	53 996
Masvingo	1 522 497	27 946	3 477	3 285	1 320	36 028	167 475	-131 447
Matabeleland North	751 331	23 532	3 735	9 011	4	36 282	82 646	-46 364
Matabeleland South	691 915	12 080	1 330	1 575	135	15 120	76 111	-60 991
Midlands	1 655 087	80 362	5 371	2 159	992	88 884	182 060	-93 176
Harare	2 147 510						236 226	-236 226
Bulawayo	651 747						71 692	-71 692
Total	13 260 802	742 226	39 746	22 387	4 470	808 829	1 458 689	-649 860

TABLE 4: CEREAL SUFFICIENCY (MONTHS) FOR DISTRICTS

Province	1-6 Months	7-12 Months	12- 18 Months	More than 18 months
Mashonaland West	Chegutu, Kariba Mhondoro- Ngezi		Sanyati	Hurungwe, Makonde Zvimba
Mashonaland Central		Mt Darwin Mbire	Muzarabani Shamva	Bindura, Guruve, Mazowe, Rushinga
Mashonaland East	Mudzi Murehwa Mutoko	Chikomba Hwedza Marondera, UMP	Goromonzi Seke	
Manicaland	Buhera Chipinge Mutare	Chimanimani Makoni, Mutasa Nyanga		
Midlands	Gweru, Kwekwe, Mberengwa, Zvishavane	Gokwe North Gokwe South Shurugwi	Chirumhanzu	
Masvingo	Bikita, Chiredzi, Chivi, Gutu Masvingo, Mwenezi, Zaka			
Matabeleland North	Binga, Hwange Lupane, Nkayi Tsholotsho	Bubi Umguza		
Matabeleland South	Beitbridge, Bulilima Mangwe, Gwanda Matobo, Umzingwane	Insiza		

FIG 3: CEREAL (MAIZE AND SMALL GRAINS) SUFFICIENCY FOR RURAL WARDS

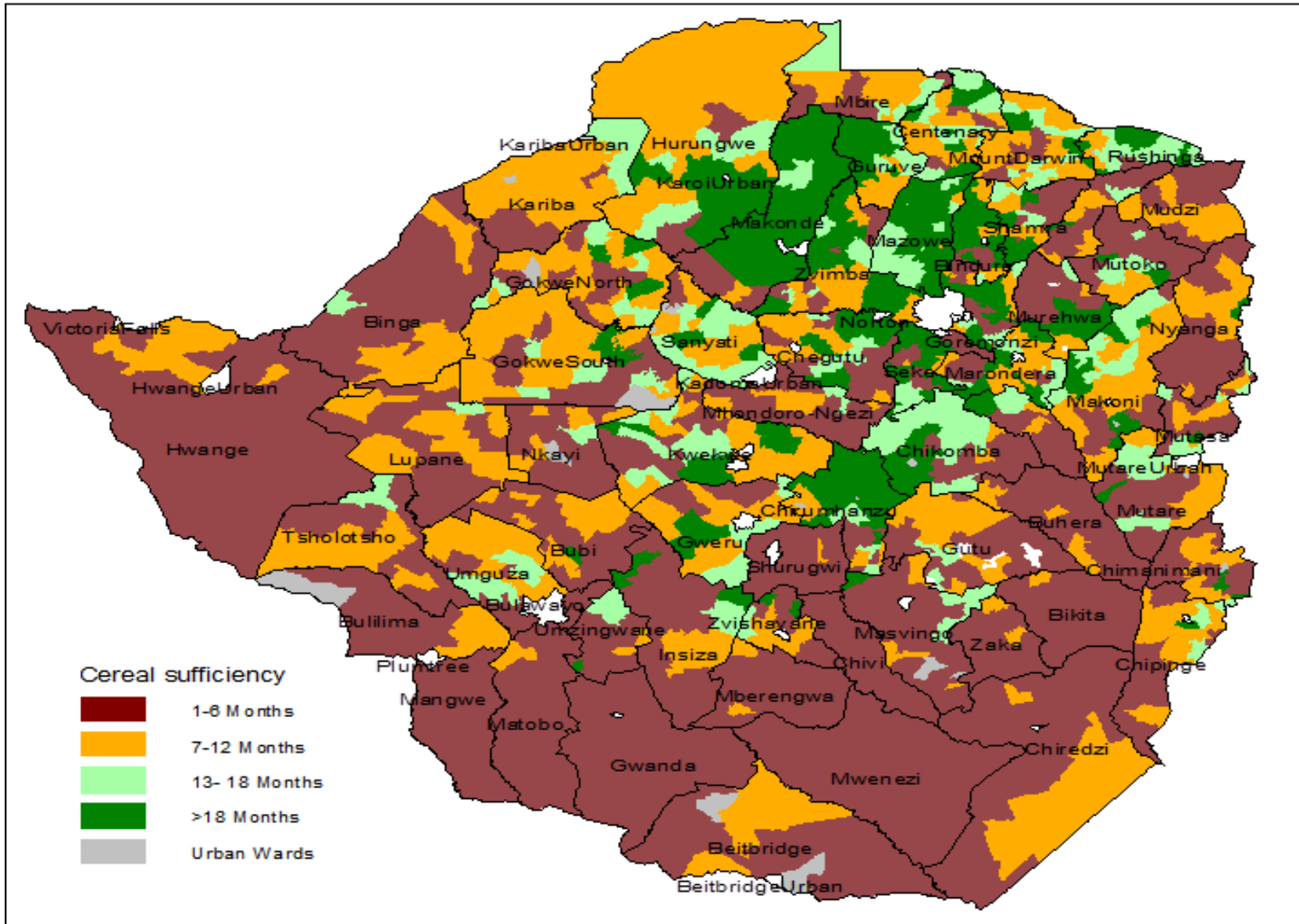


TABLE 5: PRODUCTION ESTIMATES FOR CASH CROPS (MT)

CROP	2014/15	2013/14	%
Tobacco	158 847	216 000	-26
Cotton	67 649	114 724	-41
Soya bean	57 850	84 661	-32
Banana	218 368	234 753	-7
Citrus	176 146	216 020	-18
Apples	4 068	10 099	-60
Mango	104 274	182 570	-43
Macadamia	5 494	7 000	-22
Tea	10 016	24 486	-59
Coffee	1 125	1 961	-43
Sugarcane	5 386 693	5 333 360	1

2. CROP PRODUCTION

2.1 MAIZE

TABLE 6: MAIZE PRODUCTION (MT) BY PROVINCE

PROVINCE	2014/15	2013/14	%
Mashonaland West	215 827	340 114	-37
Mashonaland Central	190 117	245 516	-23
Mashonaland East	102 978	178 165	-42
Manicaland	89 384	176 294	-49
Midlands	80 362	239 244	-66
Masvingo	27 946	116 673	-76
Matabeleland North	23 532	82 536	-84
Matabeleland South	12 080	77 616	-71
Total	742 226	1 456 153	-49

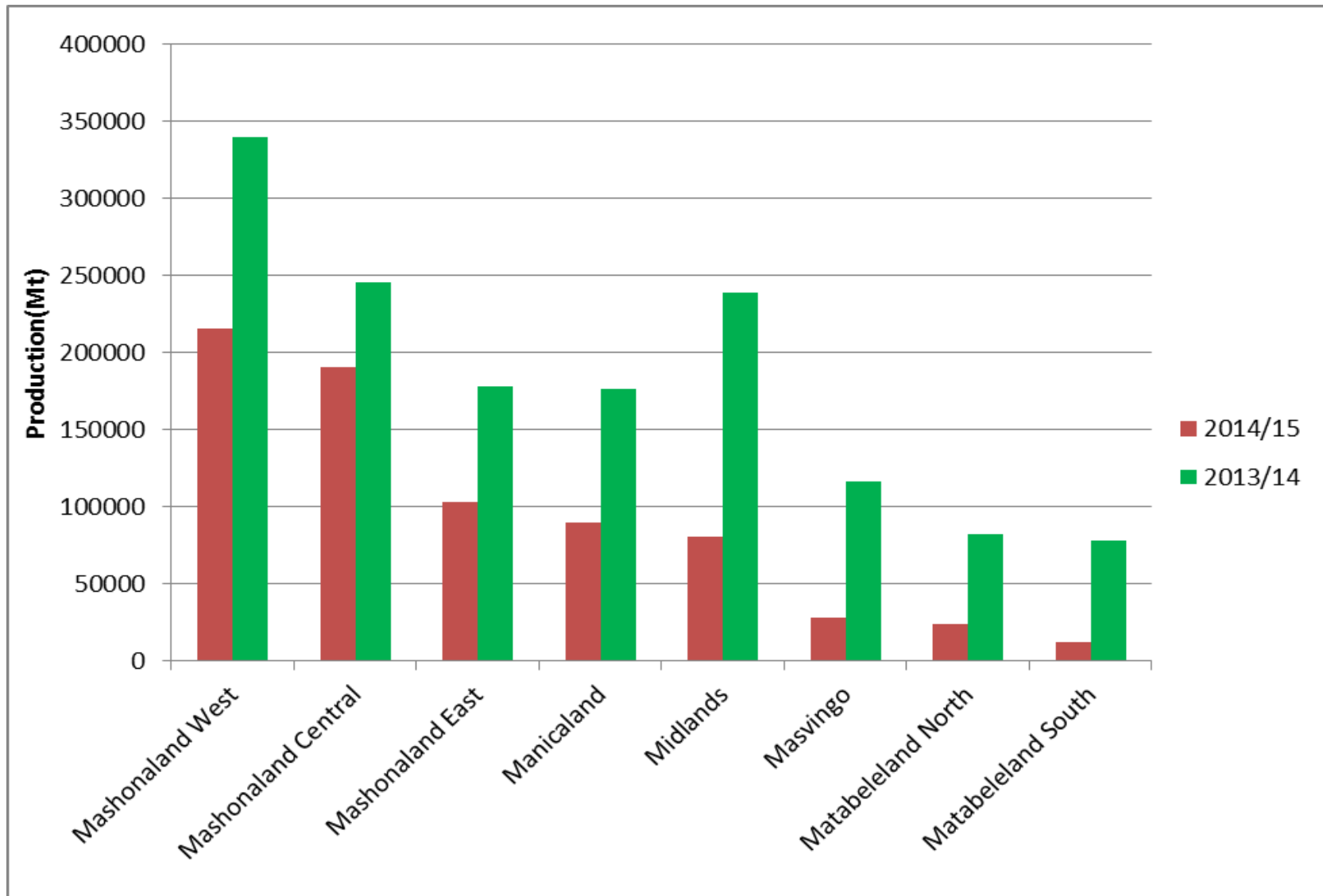
FIGURE 4: MAIZE PRODUCTION (MT) BY PROVINCE

TABLE 7: MAIZE YIELD (MT/HA) BY PROVINCE

PROVINCE	2014/15	2013/14	%
Mashonaland West	0.93	1.28	-27
Mashonaland Central	1.05	1.27	-17
Mashonaland East	0.55	0.80	-31
Manicaland	0.43	0.80	-46
Midlands	0.27	0.68	-60
Masvingo	0.14	0.54	-74
Matabeleland North	0.18	0.60	-70
Matabeleland South	0.11	0.61	-82
Average	0.48	0.85	-44

TABLE 8: MAIZE AREA (HA) BY PROVINCE

PROVINCE	2014/15	2013/14	%
Mashonaland West	230 880	265 714	-13
Mashonaland Central	180 652	193 320	-7
Mashonaland East	186 058	211 972	-12
Manicaland	209 392	217 648	-4
Midlands	295 450	351 829	-16
Masvingo	193 680	216 062	-10
Matabeleland North	128 430	137 245	-6
Matabeleland South	109 968	127 239	-14
Total	1 534 510	1 721 029	-11

TABLE 9: SECTORAL CONTRIBUTION TO MAIZE PRODUCTION (MT)

Sector	Production (Mt)		%	Contribution (%)	
	2014/15	2013/14		2014/15	2013/14
CA	279 300	636 274	-56	38	45
OR	57 167	131 137	-56	8	9
SSCA	15 786	47 103	-66	2	3
A1	158 703	322 663	-51	21	22
A2	222 254	285 667	-22	30	20
Peri-urban	9 016	18 644	-52	1	1
Total	742 226	1 441 488	-49		

Figure 5a: MAIZE PRODUCTION BY SECTOR 2014/15

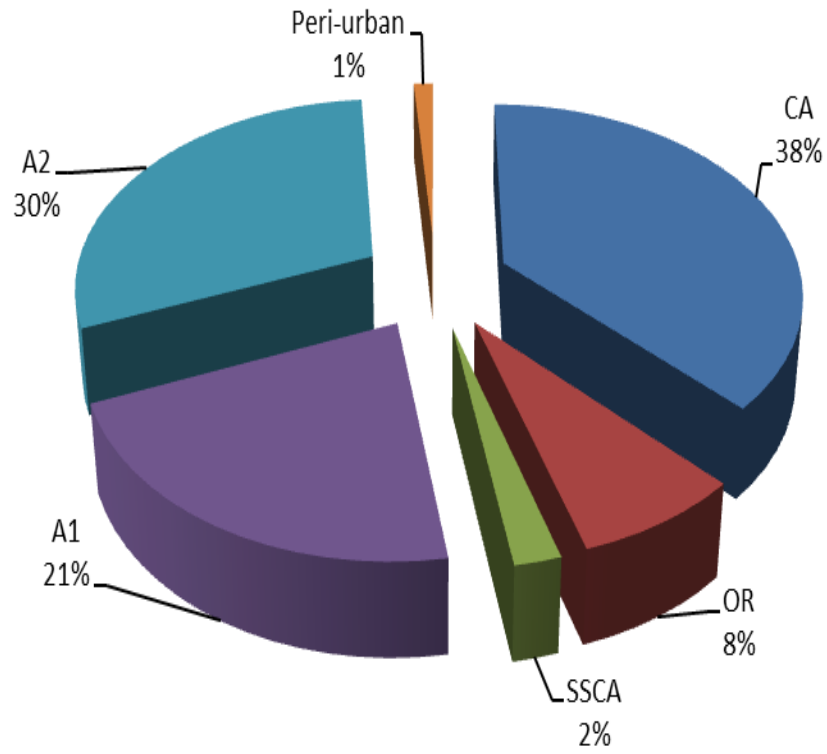


Figure 5b: MAIZE PRODUCTION BY SECTOR 2013/14

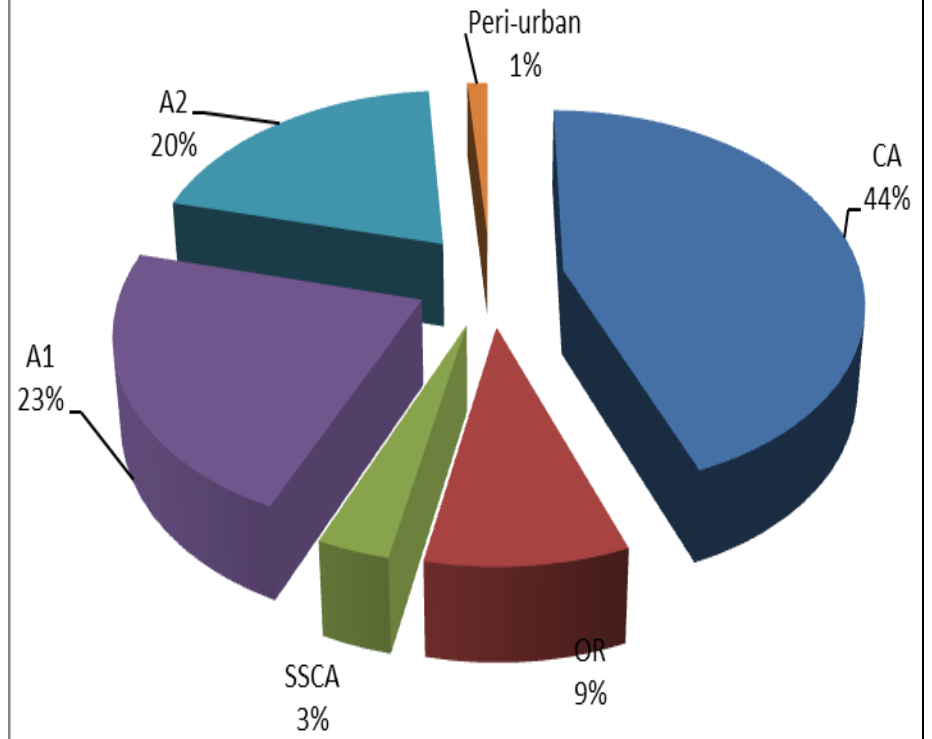


TABLE 10: AVERAGE MAIZE YIELDS BY FARMING SECTOR (MT/HA)

Sector	2014/15	2013/14	%
CA	0.30	0.59	-49
OR	0.39	0.82	-52
SSCFA	0.41	0.99	-59
A1	0.54	1.11	-51
A2	2.06	2.55	-19
Peri-Urban	0.54	1.14	-53

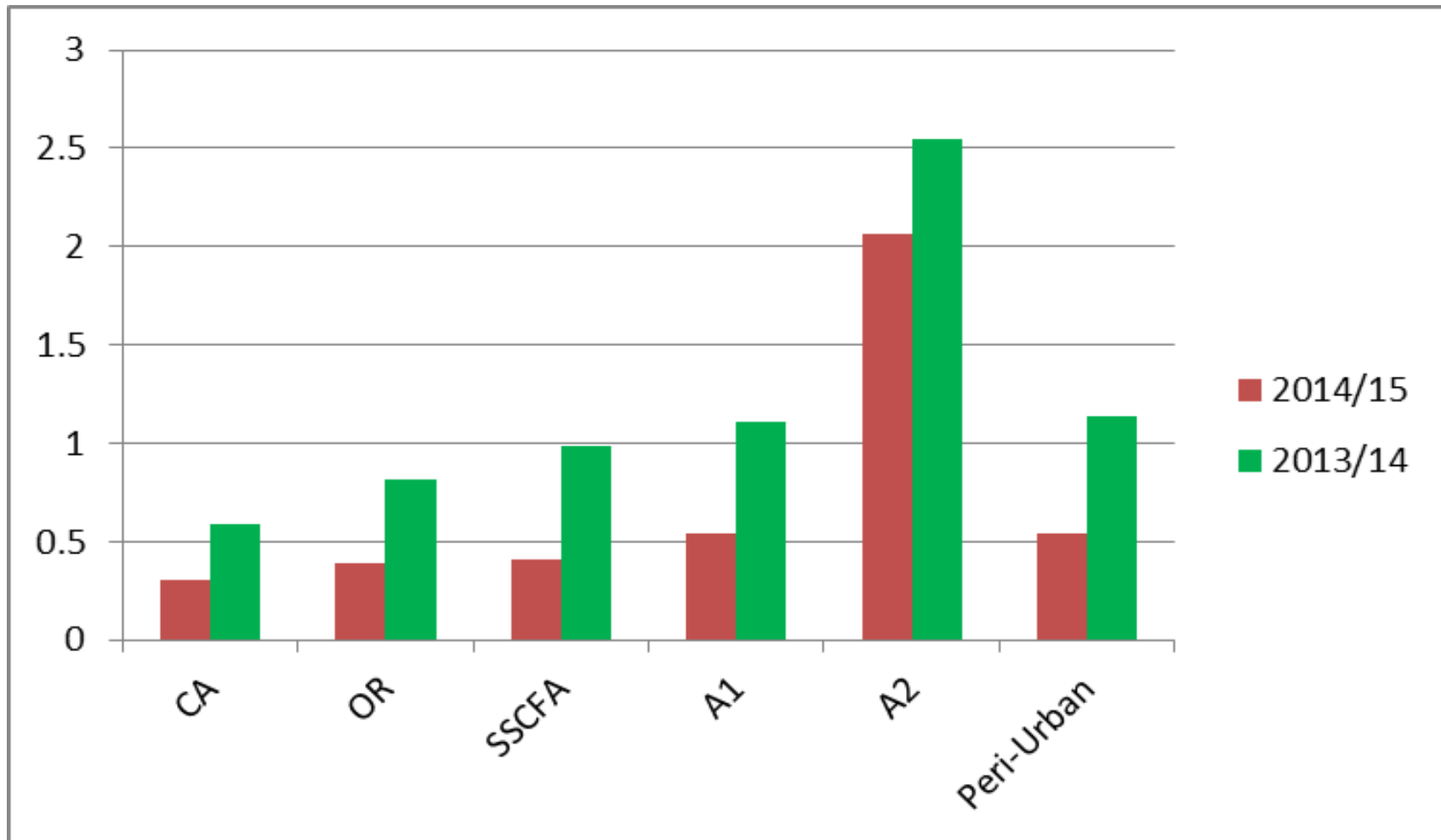
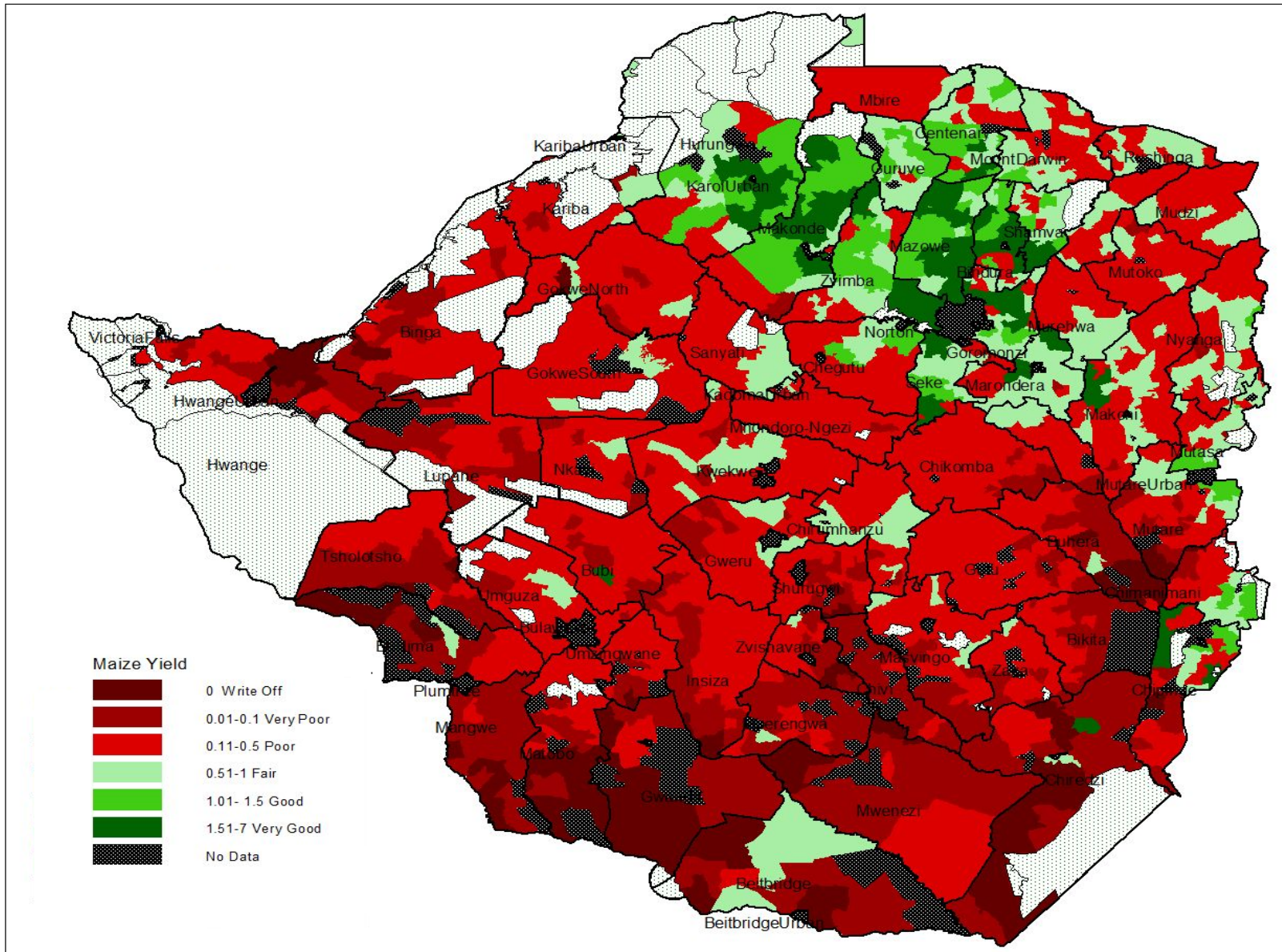
FIGURE 6: AVERAGE MAIZE YIELDS BY FARMING SECTOR (MT/HA)

FIGURE 7: NATIONAL MAIZE AVERAGE YIELDS



2.2 SORGHUM

TABLE 11: SORGHUM PRODUCTION (MT) BY PROVINCE

PROVINCE	2014/15	2013/14	%
Mashonaland West	3 045	4 287	-29
Mashonaland Central	13 841	18 500	-25
Mashonaland East	3 329	6 211	-46
Manicaland	5 618	36 111	-84
Midlands	5 371	18 001	-70
Masvingo	3 477	24 205	-86
Matabeleland North	3 735	11 936	-69
Matabeleland South	1 330	17 293	-92
Total	39 746	136 544	-71

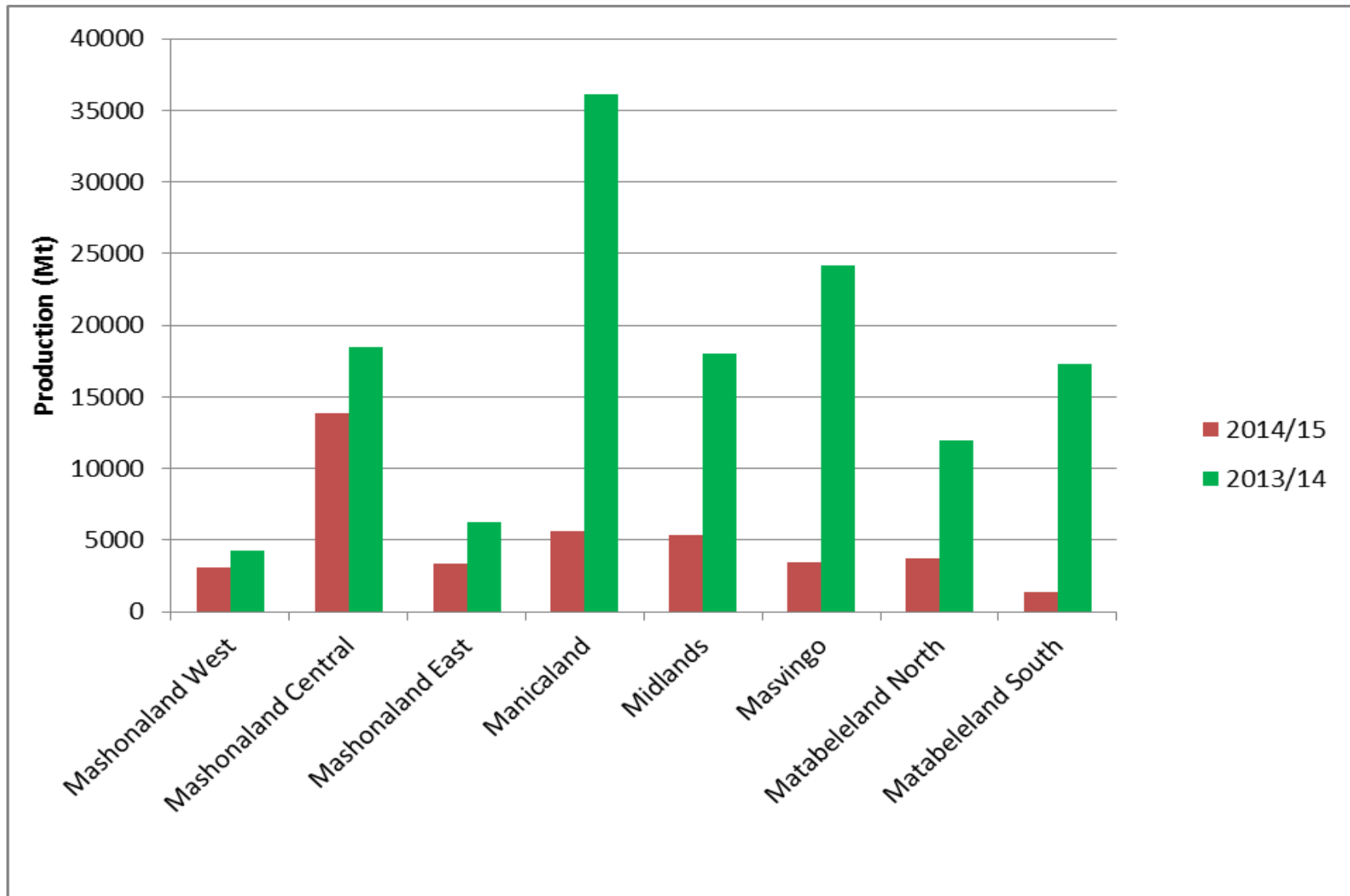
FIGURE 8: SORGHUM PRODUCTION (MT) BY PROVINCE

TABLE 12: SORGHUM YIELD (MT/HA) BY PROVINCE

PROVINCE	2014/15	2013/14	%
Mashonaland West	0.51	0.55	-7
Mashonaland Central	0.51	0.66	-23
Mashonaland East	0.33	0.41	-20
Manicaland	0.14	0.60	-77
Midlands	0.22	0.51	-57
Masvingo	0.07	0.33	-79
Matabeleland North	0.18	0.43	-58
Matabeleland South	0.05	0.43	-88
Average	0.2	0.47	-57

TABLE 13: SORGHUM AREA (HA) BY PROVINCE

PROVINCE	2014/15	2013/14	%
Mashonaland West	5 958	7 794	-24
Mashonaland Central	27 344	28 031	-2
Mashonaland East	10 013	15 148	-34
Manicaland	39 276	60 185	-35
Midlands	24 673	35 296	-30
Masvingo	47 766	73 349	-35
Matabeleland North	20 810	27 758	-25
Matabeleland South	26 097	40 216	-35
Total	201 937	287 777	-30

2.3 PEARL MILLET

TABLE 14: PEARL MILLET PRODUCTION (MT) BY PROVINCE

PROVINCE	2014/15	2013/14	%
Mashonaland West	17	56	-70
Mashonaland Central	777	1 516	-49
Mashonaland East	513	1 053	-51
Manicaland	5 050	18 024	-72
Midlands	2 159	5 452	-60
Masvingo	3 285	16 555	-80
Matabeleland North	9 011	17 669	-49
Matabeleland South	1 575	16 263	-90
Total	22 387	76 588	-71

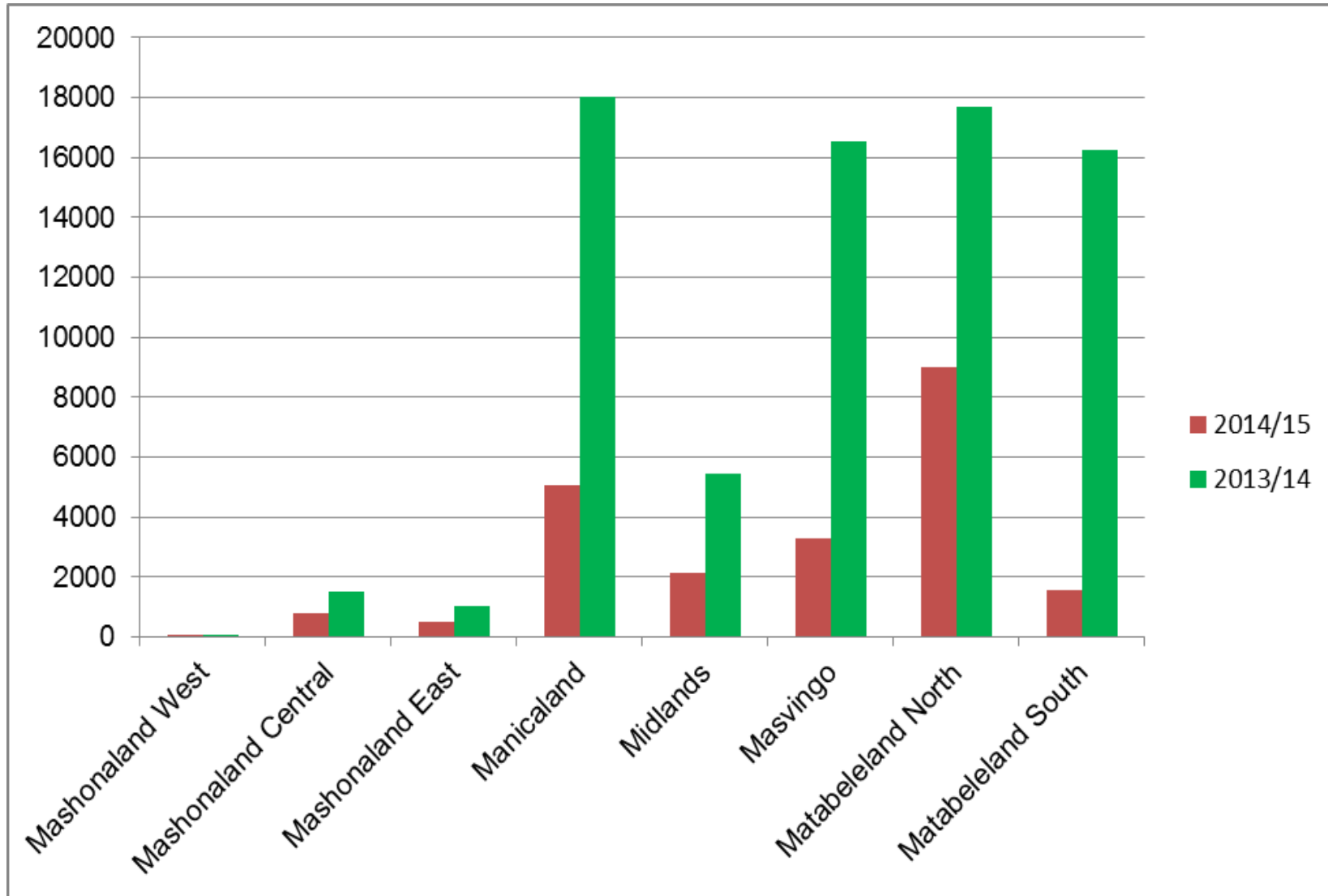
FIGURE 9: PEARL MILLET PRODUCTION BY PROVINCE

TABLE 15: PEARL MILLET YIELD (MT/HA) BY PROVINCE

PROVINCE	2014/15	2013/14	%
Mashonaland West	0.1	0.25	-60
Mashonaland Central	0.32	0.47	-32
Mashonaland East	0.21	0.24	-13
Manicaland	0.15	0.48	-69
Midlands	0.21	0.43	-51
Masvingo	0.12	0.37	-68
Matabeleland North	0.18	0.35	-49
Matabeleland South	0.06	0.42	-86
Average	0.14	0.40	-65

TABLE 16: PEARL MILLET AREA (HA) BY PROVINCE

PROVINCE	2014/15	2013/14	%
Mashonaland West	179	222	-19
Mashonaland Central	2 395	3 225	-26
Mashonaland East	2 405	4 386	-45
Manicaland	34 623	37 549	-8
Midlands	10 095	12 679	-20
Masvingo	28 449	44 744	-36
Matabeleland North	50 226	50 482	-1
Matabeleland South	26 945	38 722	-30
Total	155 317	192 009	-19

2.4 FINGER MILLET

TABLE 17: FINGER MILLET PRODUCTION (MT) BY PROVINCE

PROVINCE	2014/15	2013/14	%
Mashonaland West	69	131	-47
Mashonaland Central	171	167	2
Mashonaland East	513	1 298	-60
Manicaland	1 266	2 534	-50
Midlands	992	1 977	-50
Masvingo	1 320	4 701	-72
Matabeleland North	4	13	-69
Matabeleland South	135	188	-28
Total	4 470	11 009	-59

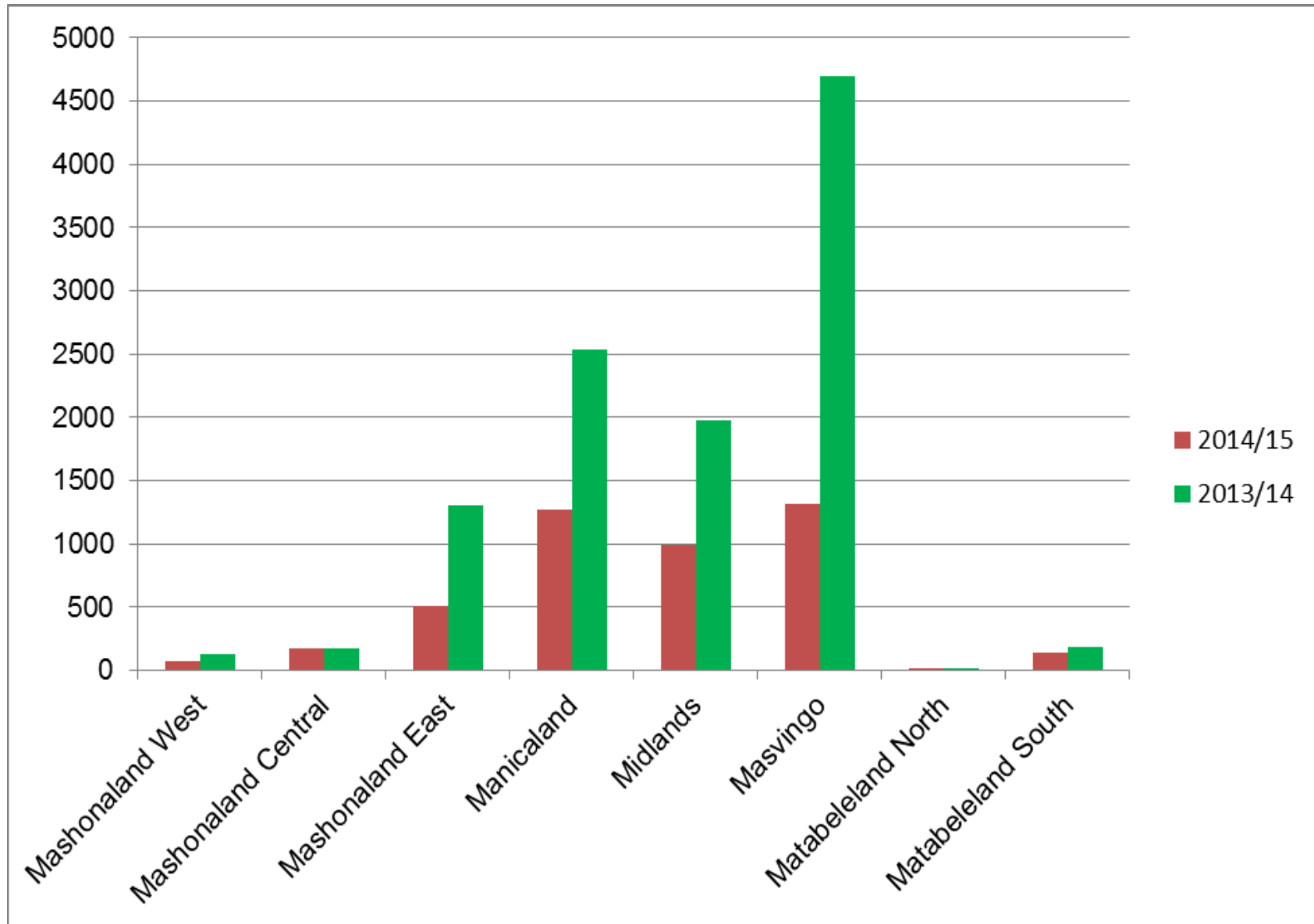
FIGURE 10: FINGER MILLET PRODUCTION (MT) BY PROVINCE

TABLE 18: FINGER MILLET YIELD (MT/HA) BY PROVINCE

PROVINCE	2014/15	2013/14	%
Mashonaland West	0.16	0.27	-41
Mashonaland Central	0.22	0.36	-39
Mashonaland East	0.18	0.33	-45
Manicaland	0.2	0.40	-50
Midlands	0.19	0.37	-40
Masvingo	0.15	0.37	-59
Matabeleland North	0.1	0.47	-79
Matabeleland South	0.2	0.64	-69
Average	0.18	0.37	-51

TABLE 19: FINGER MILLET AREA (HA) BY PROVINCE

PROVINCE	2014/15	2013/14	%
Mashonaland West	445	487	-9
Mashonaland Central	783	464	69
Mashonaland East	2 930	3 932	-25
Manicaland	6 257	6 336	-1
Midlands	5 123	5 344	-4
Masvingo	9 028	12 705	-29
Matabeleland North	43	28	54
Matabeleland South	683	294	132
Total	25 292	29 590	-15

2.5 SUGARBEANS

TABLE 20: SUGARBEANS PRODUCTION (MT) BY PROVINCE

PROVINCE	2014/15	2013/14	%
Mashonaland West	2 433	2 925	-17
Mashonaland Central	3 539	5 362	-34
Mashonaland East	2 391	3 214	-26
Manicaland	3 326	4 887	-32
Midlands	608	1 533	-60
Masvingo	301	1 603	-81
Matabeleland North	21	158	-87
Matabeleland South	154	437	-65
Total	12 772	20 119	-37

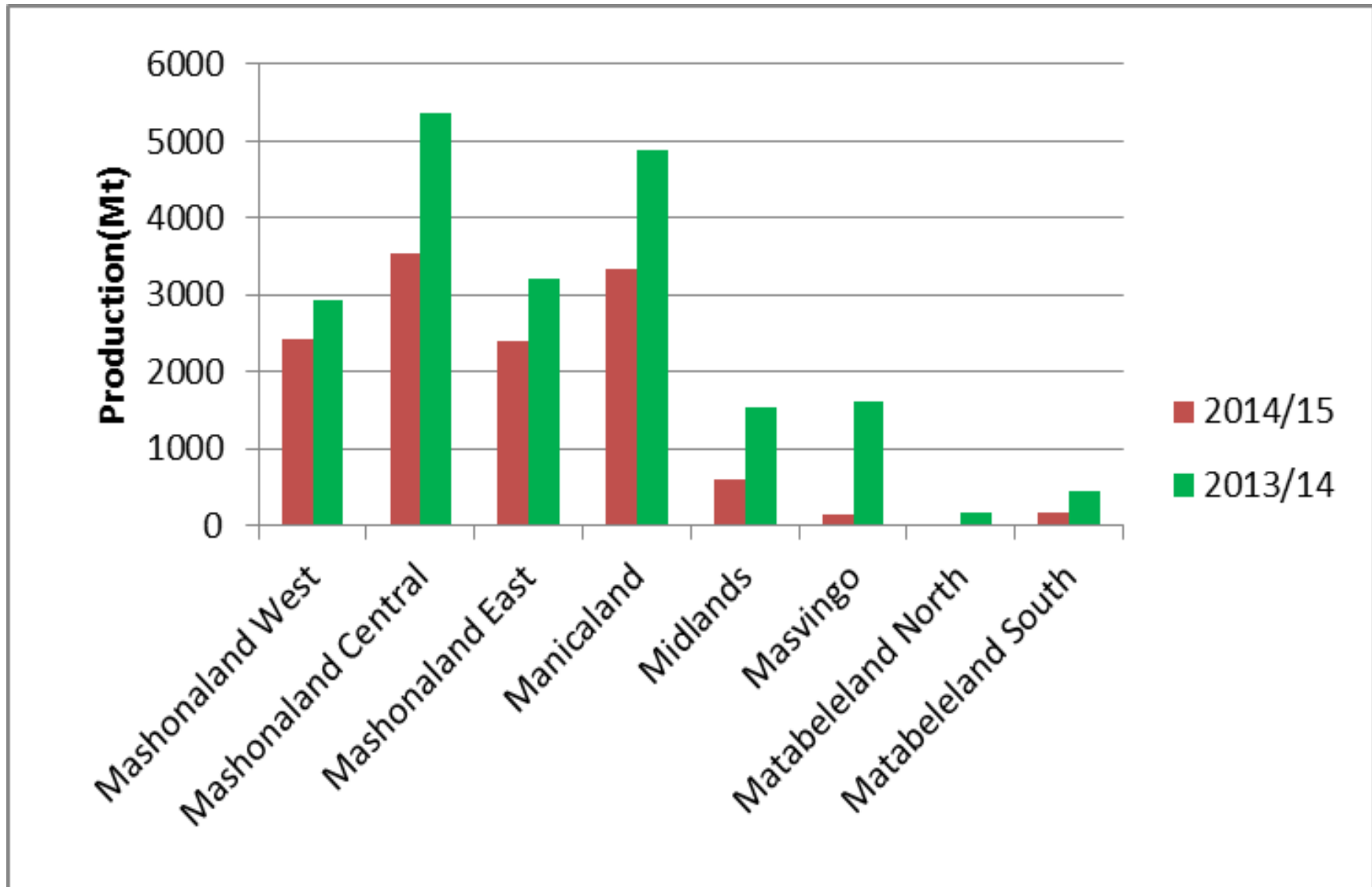
FIGURE 11: SUGARBEANS PRODUCTION (MT) BY PROVINCE

TABLE 21: SUGARBEANS YIELD (MT/HA) BY PROVINCE

PROVINCE	2014/15	2013/14	%
Mashonaland West	0.42	0.49	-14
Mashonaland Central	0.52	0.63	-17
Mashonaland East	0.39	0.44	-11
Manicaland	0.53	0.49	8
Midlands	0.32	0.45	-29
Masvingo	0.25	0.62	-60
Matabeleland North	0.10	0.60	-83
Matabeleland South	0.23	0.37	-38
Average	0.44	0.51	-14

TABLE 22: SUGARBEANS AREA (HA) BY PROVINCE

PROVINCE	2014/15	2013/14	%
Mashonaland West	5 829	5 981	-3
Mashonaland Central	6 858	8 545	-20
Mashonaland East	6 060	7 332	-17
Manicaland	6 315	9 976	-37
Midlands	1 892	3 396	-44
Masvingo	1 202	2 579	-53
Matabeleland North	209	265	-21
Matabeleland South	669	1 183	-43
Total	29 047	39 257	-26

2.6 GROUNDNUTS

TABLE 23: GROUNDNUTS PRODUCTION (MT) BY PROVINCE

Province	2014/15	2013/14	%
Mashonaland West	8 512	10 306	-17
Mashonaland Central	18 851	17 831	6
Mashonaland East	14 921	21 814	-32
Manicaland	25 352	26 108	-3
Midlands	12 766	33 997	-62
Masvingo	8 151	17 537	-54
Matabeleland North	1 720	2 436	-29
Matabeleland South	1 124	5 109	-78
Total	91 397	135 138	-32

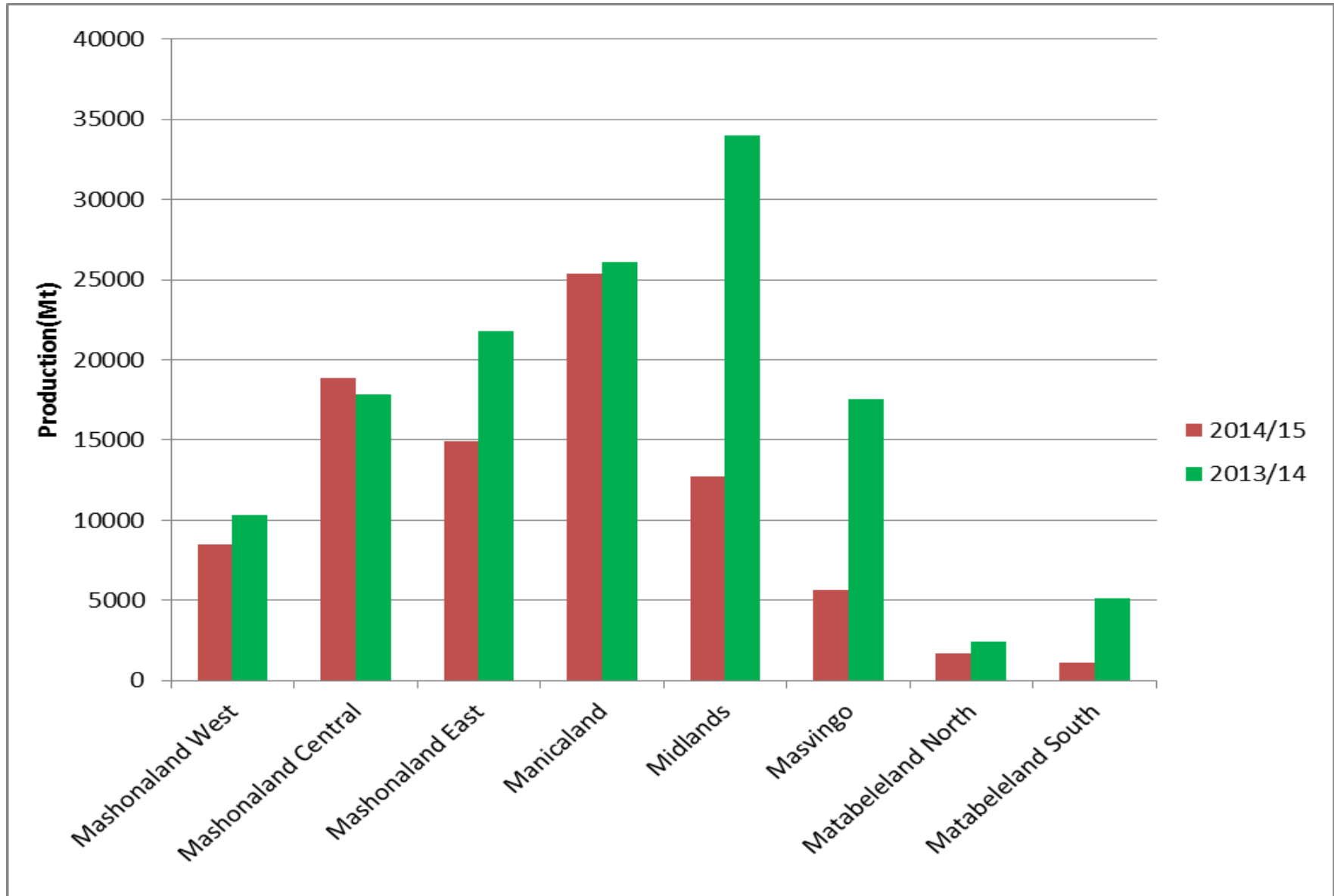
FIGURE 12: GROUNDNUTS PRODUCTION (MT) BY PROVINCE

TABLE 24: GROUNDNUTS YIELD (MT/HA) BY PROVINCE

Province	2014/15	2013/14	%
Mashonaland West	0.38	0.44	-14
Mashonaland Central	0.56	0.55	2
Mashonaland East	0.37	0.47	-21
Manicaland	0.37	0.54	-31
Midlands	0.25	0.68	-63
Masvingo	0.17	0.38	-55
Matabeleland North	0.25	0.38	-34
Matabeleland South	0.08	0.5	-84
Average	0.32	0.51	-37

TABLE 25: GROUNDNUTS AREA (HA) BY PROVINCE

PROVINCE	2014/15	2013/14	%
Mashonaland West	22 320	23 261	-4
Mashonaland Central	33 614	32 645	3
Mashonaland East	39 863	46 817	-15
Manicaland	69 048	48 444	43
Midlands	50 913	50 204	1
Masvingo	48 666	46 143	6
Matabeleland North	6 843	6 341	8
Matabeleland South	13 596	10 192	33
Total	284 863	264 047	8

2.7 TOBACCO

TABLE 26: TOBACCO PRODUCTION (MT) BY PROVINCE

PROVINCE	2014/15	2013/14	%
Mashonaland West	54 758	64 358	-15
Mashonaland Central	41 689	59 921	-30
Mashonaland East	31 770	54 144	-41
Manicaland	29 900	36 496	-18
Midlands	587	742	-21
Masvingo	132	214	-38
Matabeleland North	2	45	-96
Matabeleland South	9	80	-89
Total	158 847	216 000	-26

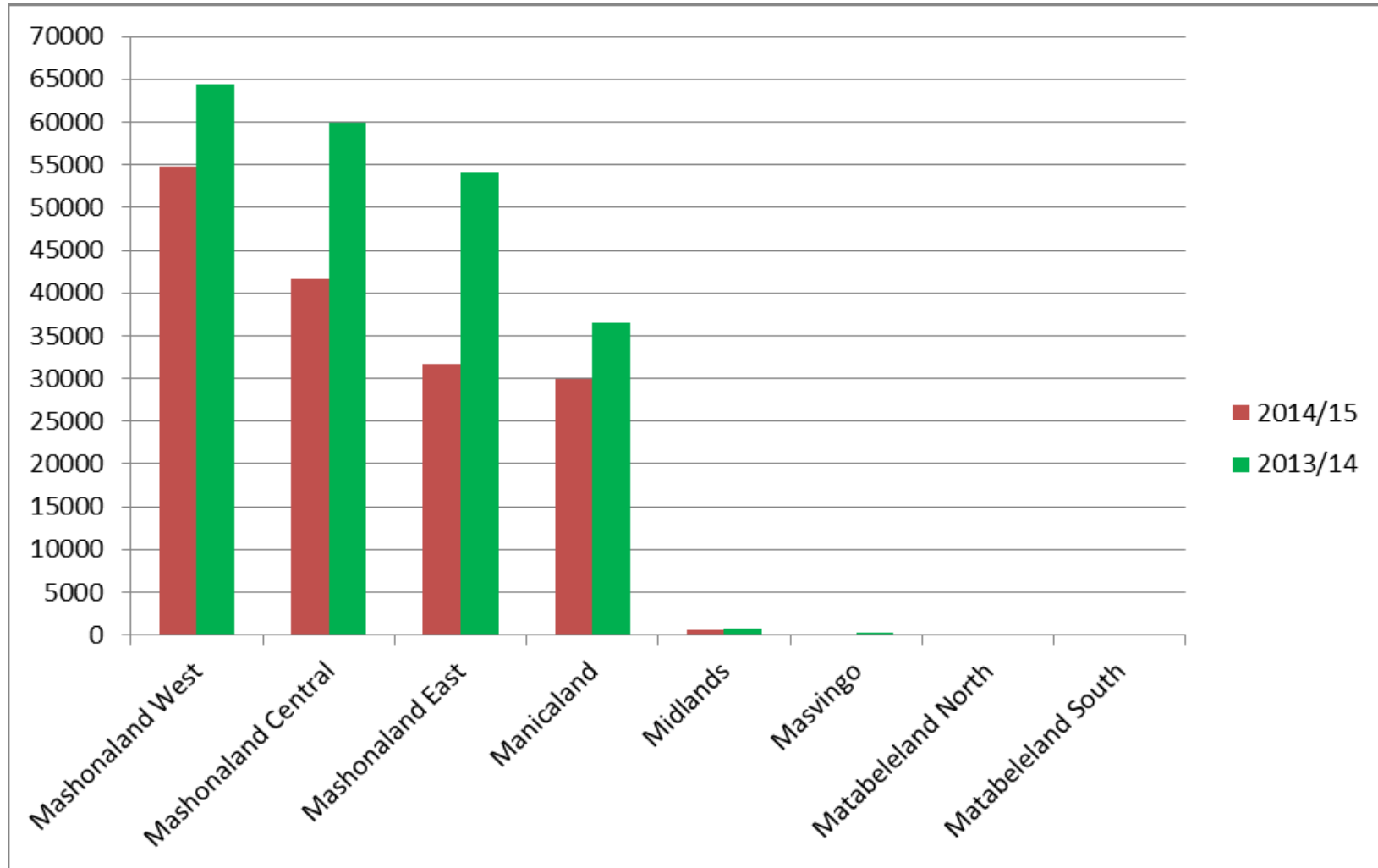
FIGURE 13: TOBACCO PRODUCTION (MT) BY PROVINCE

TABLE 27: TOBACCO YIELD (MT/HA) BY PROVINCE

PROVINCE	2014/15	2013/14	%
Mashonaland West	1.4	1.80	-22
Mashonaland Central	1.5	2.00	-25
Mashonaland East	1.6	1.80	-11
Manicaland	1.5	1.60	-6
Midlands	1.1	0.80	38
Masvingo	0.6	0.60	0
Matabeleland North	2	2.00	0
Matabeleland South	0.4	3.00	-87
Average	1.3	1.80	-28

TABLE 28: TOBACCO AREA (HA) BY PROVINCE

PROVINCE	2014/15	2013/14	%
Mashonaland West	39 959	32 008	25
Mashonaland Central	27 742	26 821	3
Mashonaland East	20 107	26 928	-25
Manicaland	19 457	20 420	-5
Midlands	531	830	-36
Masvingo	207	320	-35
Matabeleland North	1	20	-95
Matabeleland South	27	24	13
Total	108 031	107 371	1

2.8 COTTON

TABLE 29: COTTON PRODUCTION (MT) BY PROVINCE

PROVINCE	2014/15	2013/14	%
Mashonaland West	2 725	9 759	-72
Mashonaland Central	21 201	23 353	-9
Mashonaland East	62	470	-87
Manicaland	2 014	10 122	-80
Midlands	34 172	48 633	-30
Masvingo	4 951	19 348	-74
Matabeleland North	4 951	3 028	-17
Matabeleland South	0	11	-100
Total	67 649	114 724	-41

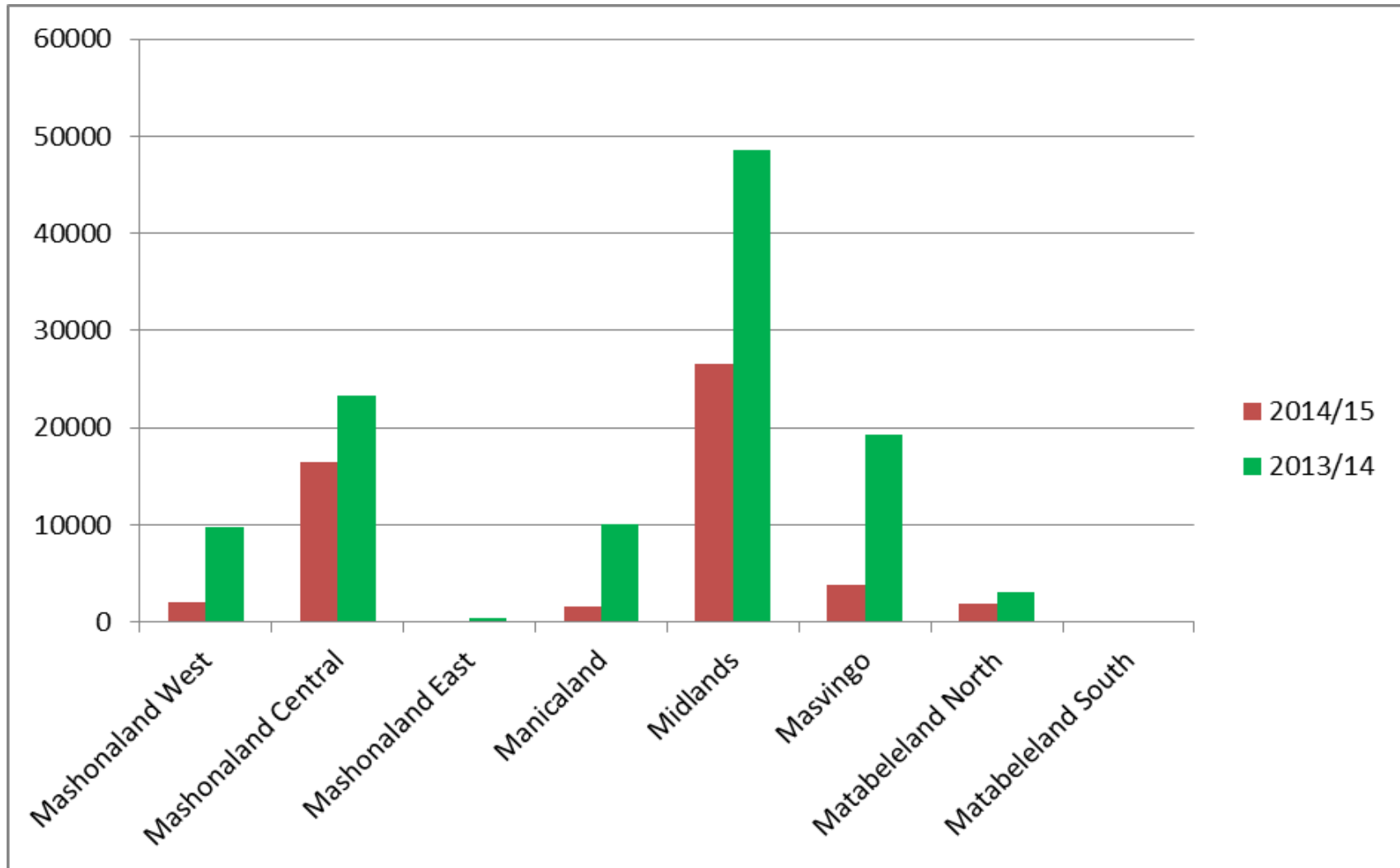
FIGURE 14: COTTON PRODUCTION (MT) BY PROVINCE

TABLE 30: COTTON YIELD (MT/HA) BY PROVINCE

PROVINCE	2014/15	2013/14	%
Mashonaland West	0.48	0.60	-20
Mashonaland Central	0.51	0.50	2
Mashonaland East	0.39	0.50	-22
Manicaland	0.24	0.60	-60
Midlands	0.35	0.60	-42
Masvingo	0.18	0.60	-70
Matabeleland North	0.34	0.40	-15
Matabeleland South	0	0.40	-100
Total	0.36	0.57	-37

TABLE 31: COTTON AREA (HA) BY PROVINCE

PROVINCE	2014/15	2013/14	%
Mashonaland West	4 417	16 264	-73
Mashonaland Central	32 338	46 706	-31
Mashonaland East	123	941	-87
Manicaland	6 531	16 870	-61
Midlands	75 949	81 055	-6
Masvingo	21 396	32 246	-34
Matabeleland North	5 773	7 570	-24
Matabeleland South	16	27	-41
Total	146 543	201 679	-27

2.9 OTHER CROPS

TABLE 32: PRODUCTION OF OTHER CROPS (MT)

CROP	2014/15	2013/14	%
Irish Potatoes	417 480	397 600	5
Sweet Potatoes	218 737	335 335	-35
Soya bean	57 850	84 661	-31
Roundnuts	37 805	49 429	-24
Cowpeas	13 519	25 053	-46
Cucurbits(Pumpkins, Squash, Marrows, Melons and Butternuts)	35 775	33 750	6
Banana	218 368	234 753	-7
Citrus	176 146	216 020	-18
Apples	4 068	10 099	-60
Mango	104 274	182 570	-43
Macadamia	5 494	7 000	-22
Tea	10 016	24 486	-59
Coffee	1 125	1 961	-43
Sugar cane	5 386 693	5 333 360	1

TABLE 33: YIELD OF OTHER CROPS (MT/HA)

CROP	2014/15	2013/14	%
Irish Potatoes	34	35	-3
Sweet Potatoes	8.65	13.40	-35
Soya bean	1.20	1.29	-7
Roundnuts	0.35	0.44	-20
Cowpeas	0.26	0.39	-33
Cucurbits(Pumpkins, Squash, Marrows, Melons and Butternuts)	7	6.7	4
Banana	32	50	-37
Citrus	29	35	-17
Apples	18	45	-60
Mango	27	49	-45
Macadamia	1.5	2	-25
Tea	1.6	3	-47
Coffee	1.5	2.9	-48
Sugar cane	80	80	0

TABLE 34: OTHER CROPS AREA (HA)

CROP	2014/15	2013/14	%
Irish Potatoes	12 269	11 360	8
Sweet Potatoes	25 275	25 025	1
Soya bean	48 261	67 571	-29
Roundnuts	108 349	112 338	-4
Cowpeas	52 332	64 213	-19
Cucurbits(Pumpkins, Squash, Marrows, Melons and Butternuts)	5 110	5 037	1
Banana	6 824	4 643	47
Citrus	6 074	6 172	-2
Apples	226	224	-1
Mango	3 862	3 722	4
Macadamia	3 663	3 500	5
Tea	6 260	8 162	-23
Coffee	750	654	15
Sugar cane	67 334	66 667	1

3 EXECUTIVE SUMMARY-LIVESTOCK

TABLE 35: LIVESTOCK NUMBERS BY SPECIES BY PROVINCE

Province	Cattle		Sheep		Goats		Pigs	
	2014/15	2013/14	2014/15	2013/14	2014/15	2013/14	2014/15	2013/14
Mash West	684 328	773 569	108 479	130 021	116 565	111 003	89 541	85 278
Mash Central	506 892	509 289	32 255	38 977	274 414	268 877	69 079	65 790
Mash East	618 072	566 893	27 806	30 006	199 899	196 661	39 477	37 597
Manicaland	660 899	629 901	78 697	100 462	802 379	891 532	51 317	50 809
Midlands	727 767	712 693	93 510	93 796	524 755	499 703	28 249	26 904
Masvingo	1007165	1 039 666	16 589	17 904	398 115	368 722	25 435	25 623
Mat North	656 898	610 708	28 513	34 176	1 117 266	1 030 708	16 120	17 687
Mat South	615 359	525 387	70 778	76 265	616 135	574 068	26 031	32 539
Total	5 477 338	5 368 105	456 627	521 607	4 049 528	3 941 274	345 249	342 227

4 LIVESTOCK PRODUCTION

4.1 LIVESTOCK PRODUCTIVITY

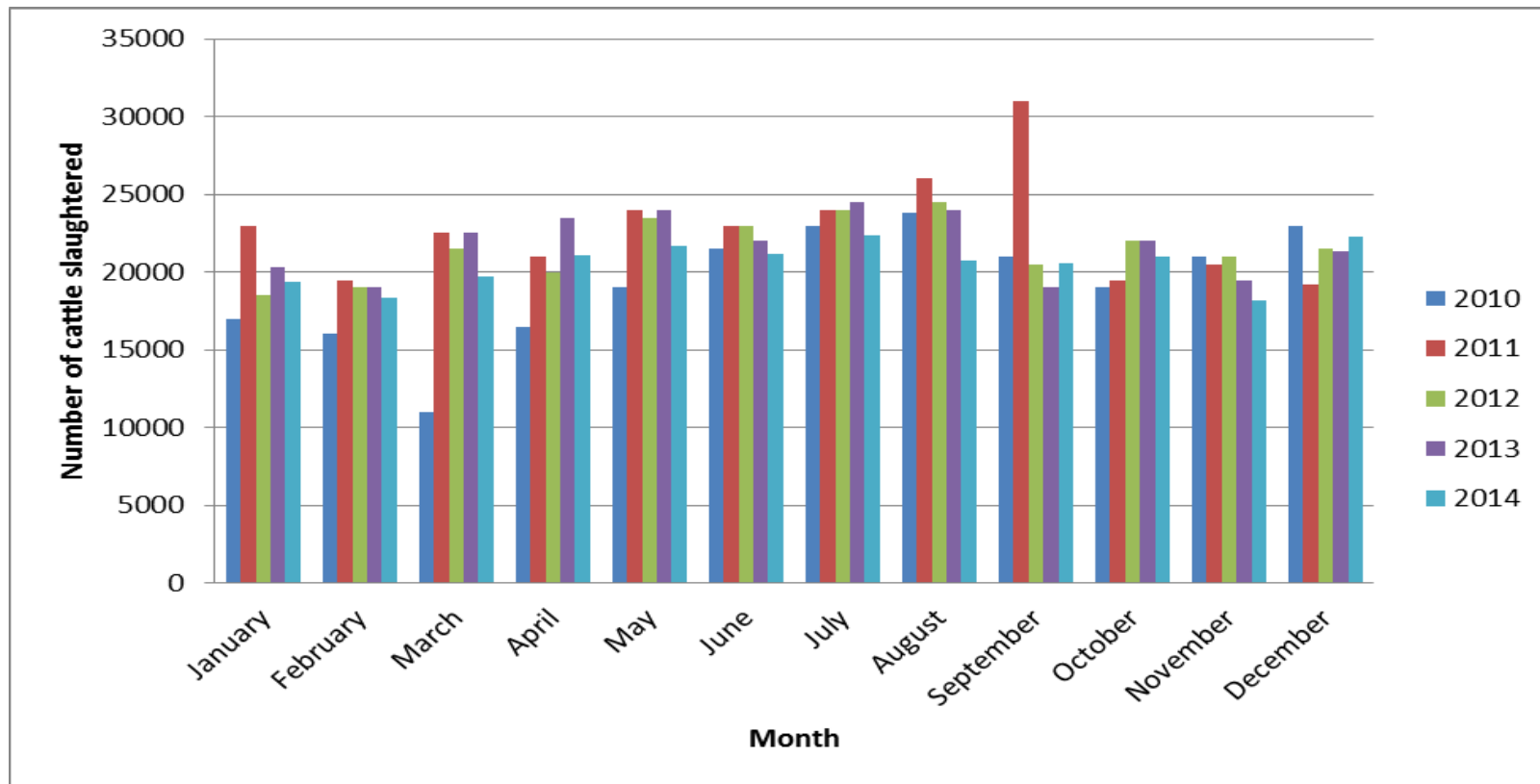
TABLE 36: OFFTAKE BY PROVINCE BY SECTOR

PROVINCE	Communal (%)	A1 (%)	OR (%)	SSCA (%)	A2 (%)
Mashonaland West	6	7	4	6	9
Mashonaland Central	5	5	5	4	10
Mashonaland East	5	6	5	7	12
Manicaland	4	5	4	5	6
Midlands	5	5	6	4	9
Masvingo	4	6	5	7	13
Matabeleland North	4	9	5	4	15
Matabeleland South	5	9	8	9	12
Total	5	7	5	6	11

4.2 CATTLE SLAUGHTERS AND MEAT PRODUCTION

- Total cattle slaughtered was **246 422** producing **41 677 Mt** of beef
- **197 138** animals (**80%**) were slaughtered through the formal sector producing **33 341 Mt** of beef.
- **49 284** animals (**20%**) were slaughtered through the informal sector producing **8 335 Mt** of beef

FIG 15: CATTLE SLAUGHTER (FORMAL SECTOR)



4.3 SMALL LIVESTOCK SLAUGHTER

TABLE 37: SMALL LIVESTOCK SLAUGHTER TREND AT REGISTERED ABATTOIRS

Livestock Type	YEAR				
	2010	2011	2012	2013	2014
Pigs	121 137	134 800	139 991	145 927	130 058
Goats	7 131	10 945	13 964	10 488	7 508
Sheep	3 542	6 093	6 871	4 668	5 738

FIG 16: PIG SLAUGHTER TREND

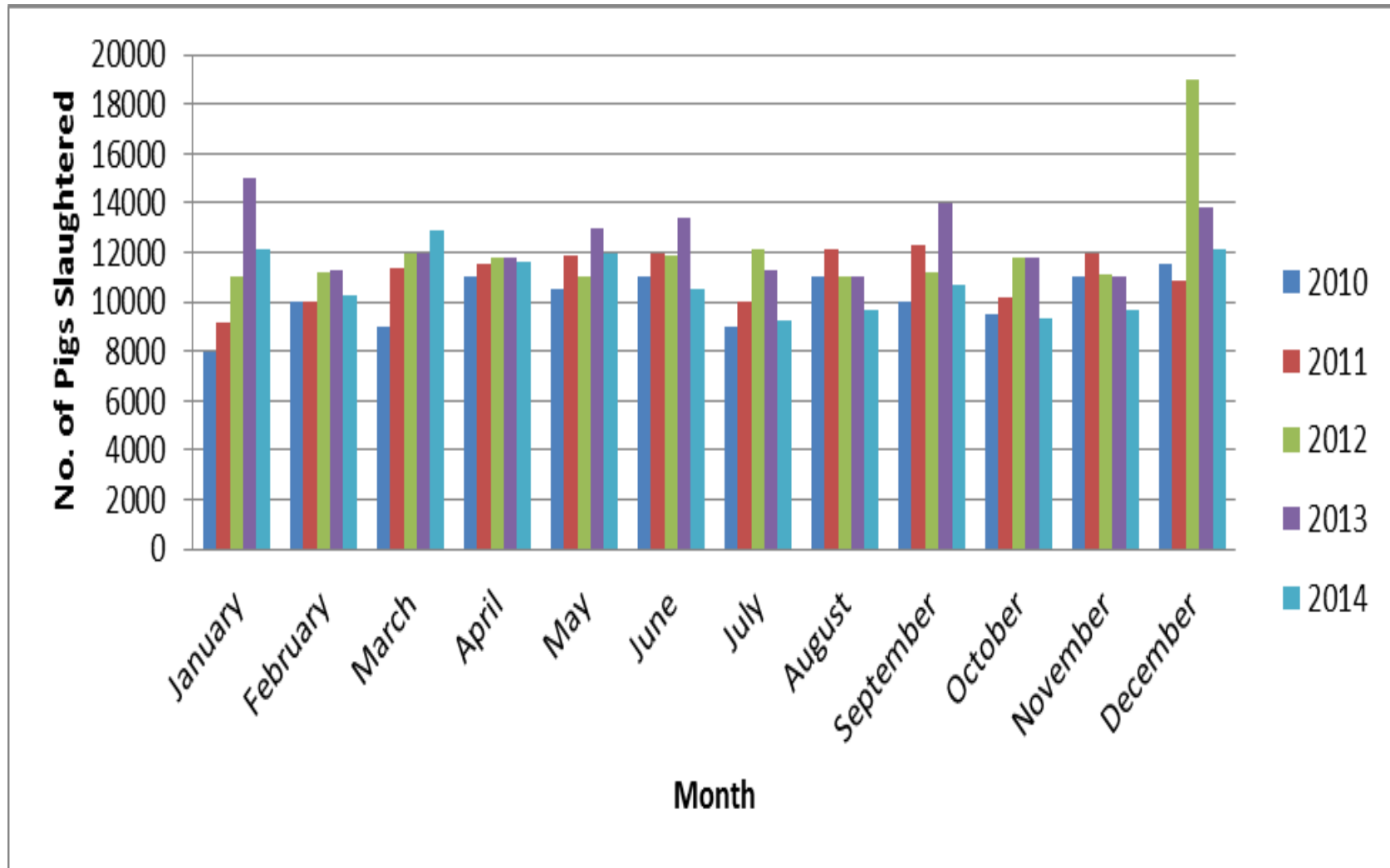


FIG 17: GOAT SLAUGHTER TREND

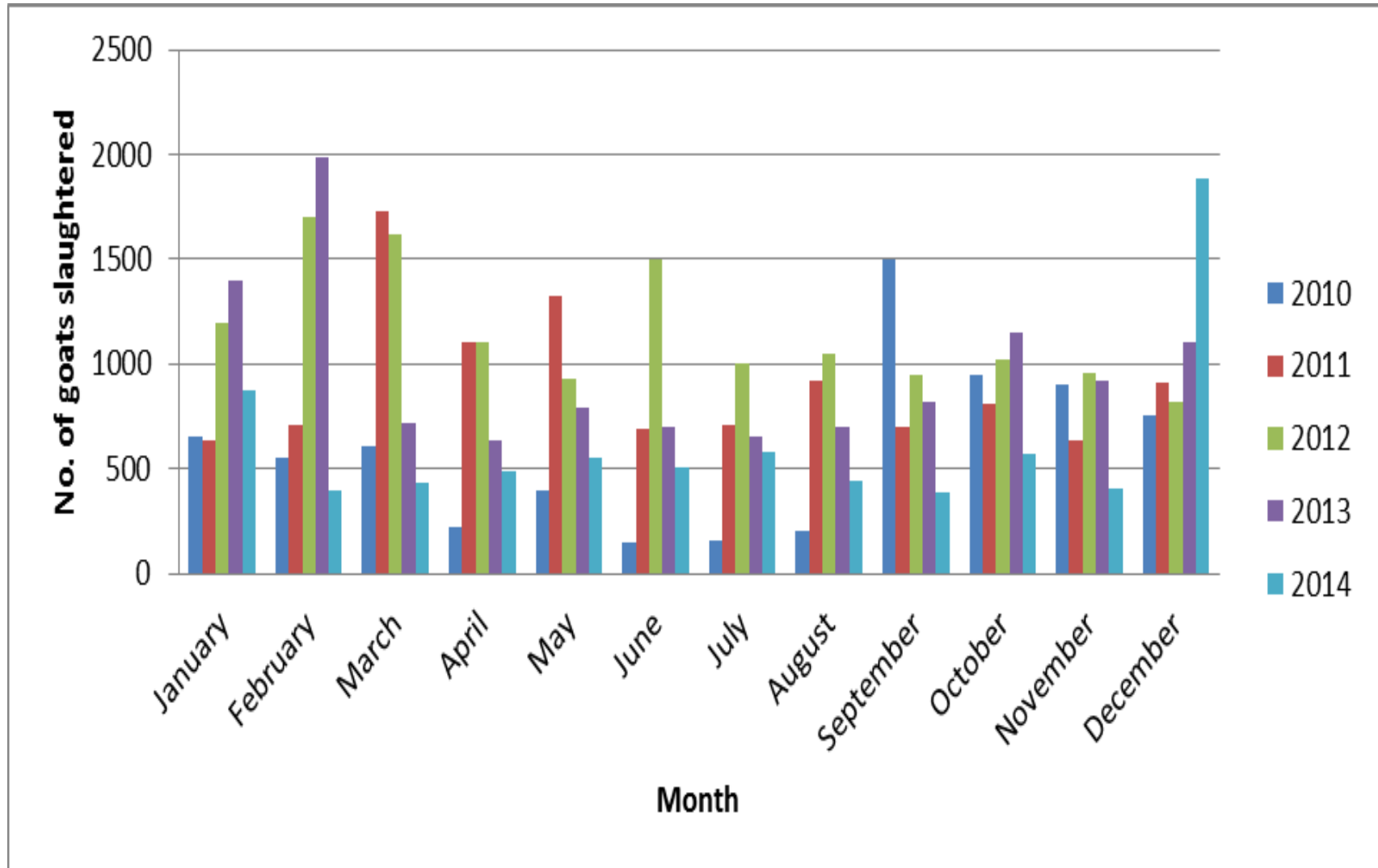
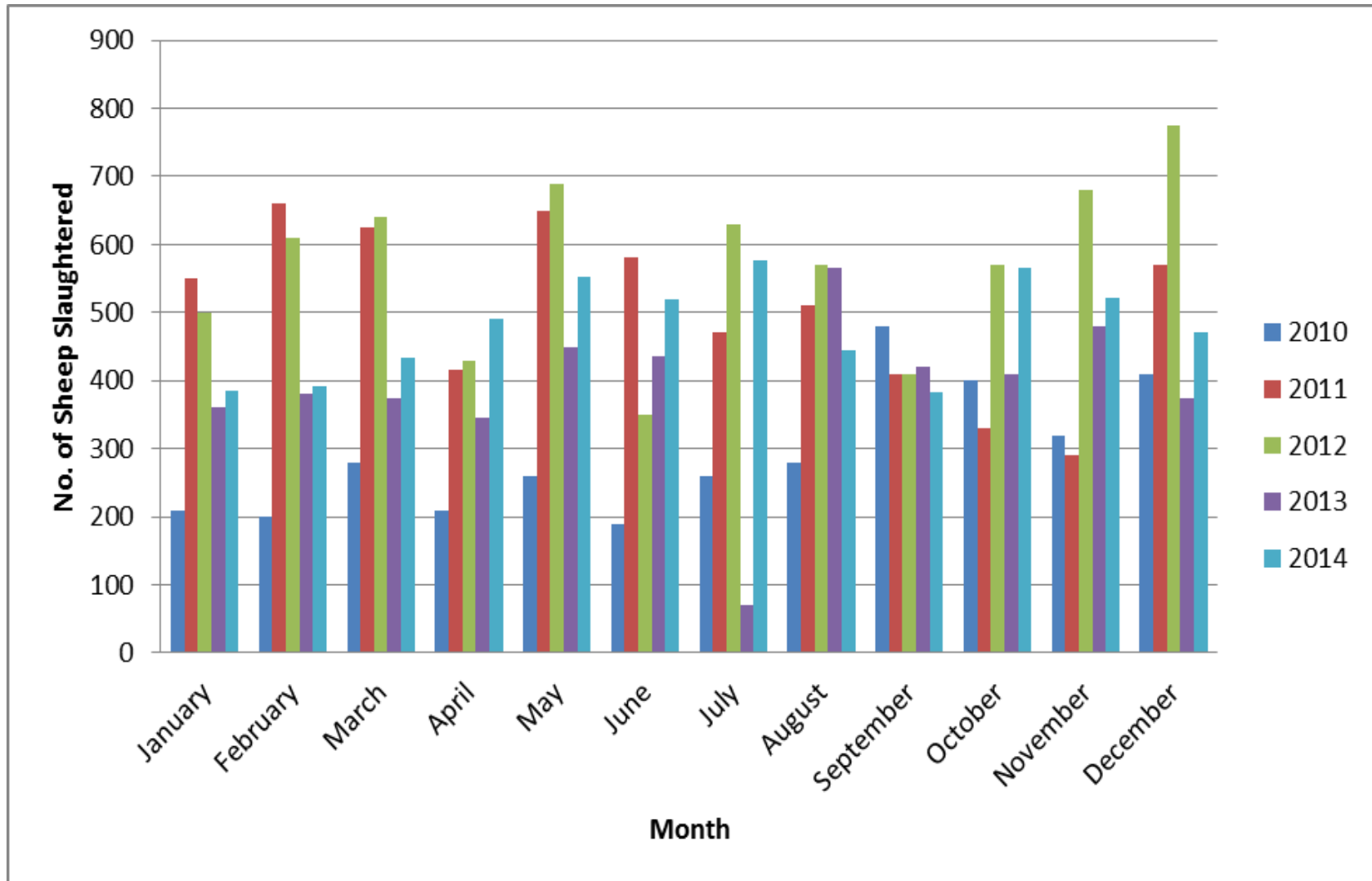


FIG 18: SHEEP SLAUGHTER TREND

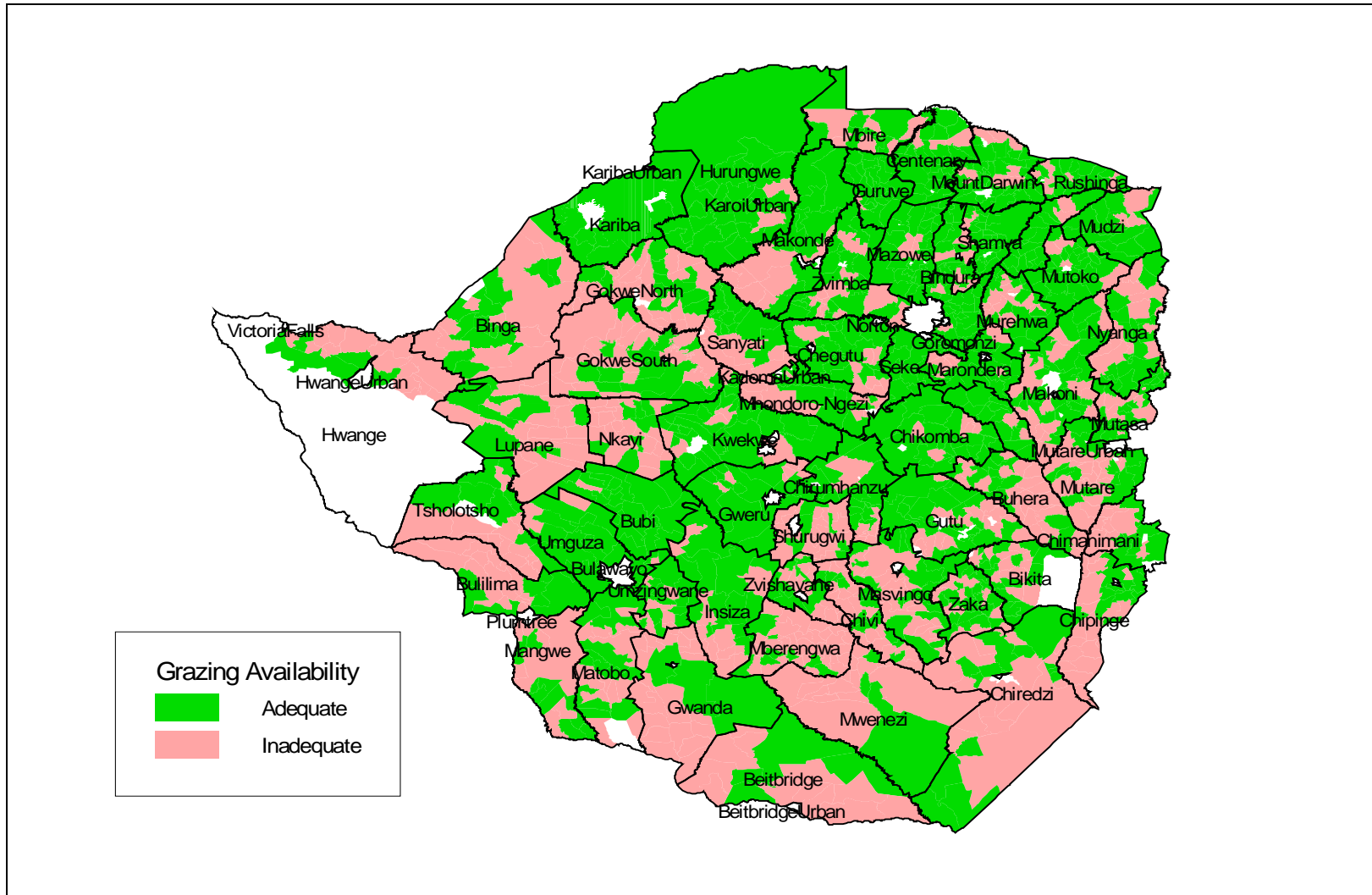


4.4 POULTRY PRODUCTION

- The small scale sector contributes **50%** of both broiler meat and egg production.
- Average monthly day old chick production increased from **5.4 million** in 2013 to **6.4 million** in 2014.
- Average monthly table egg production from registered producers increased by **14 %** from **2.1 million** dozens in 2013 to **2.4 million** dozens in 2014.

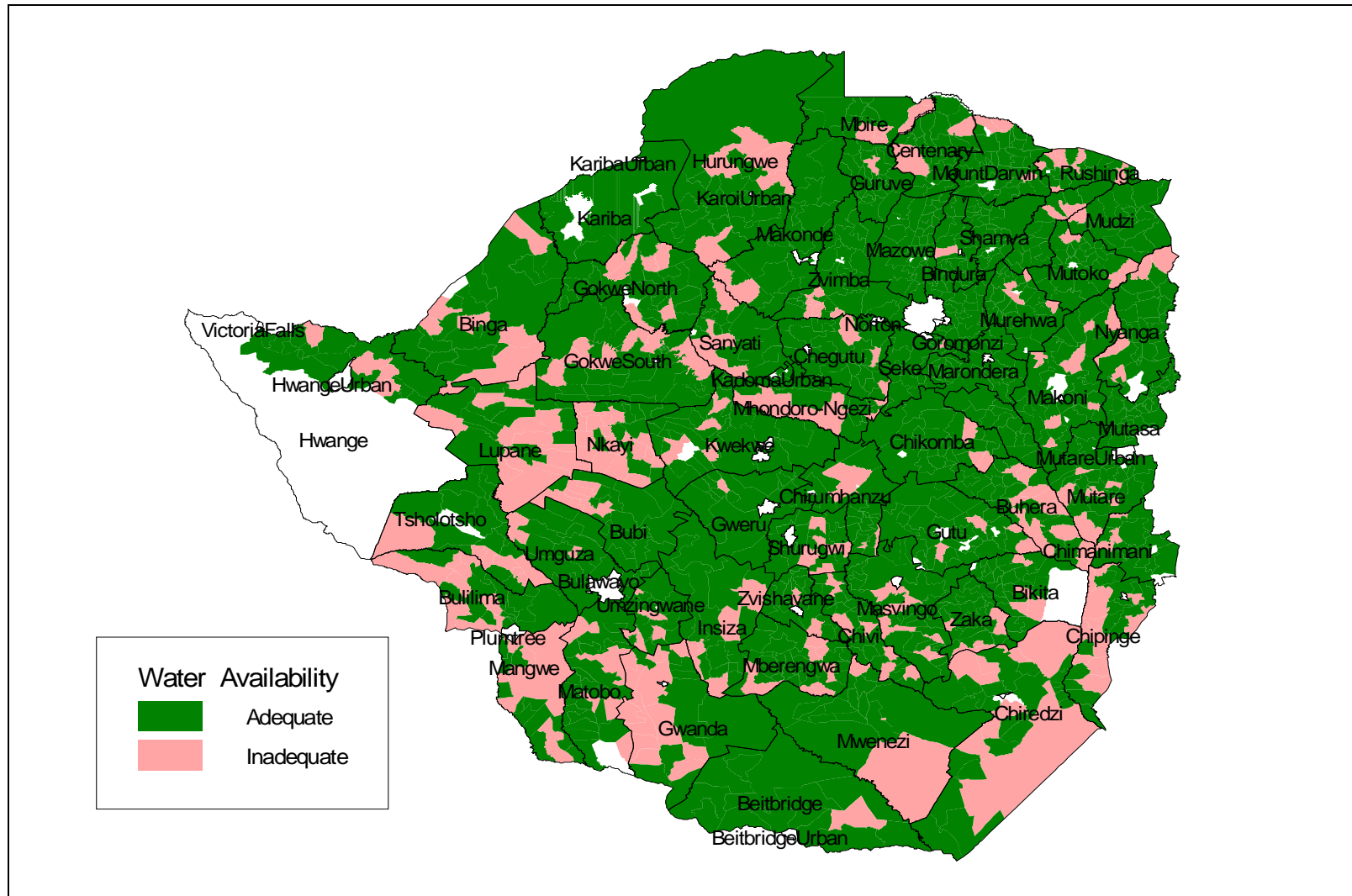
4.5 GRAZING AND STOCK FEED AVAILABILITY

FIG 19: GRAZING AVAILABILITY



4.6 WATER AVAILABILITY

FIG 20: WATER AVAILABILITY



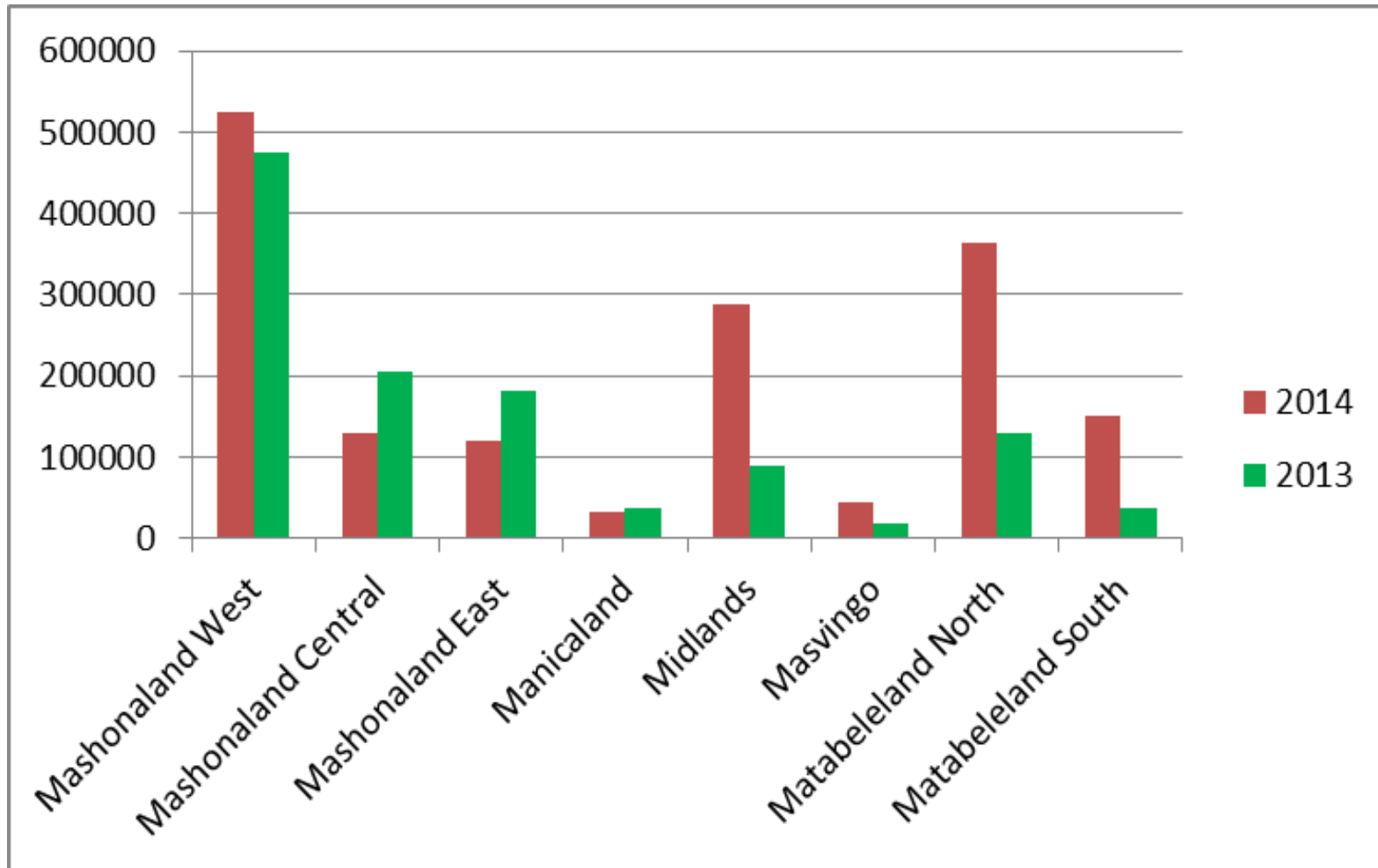
4.7 VELD FIRES

TABLE 38: VELD FIRES BY PROVINCE

PROVINCE	PROVINCIAL GRAZING AREA (Ha)	2014		2013	
		AREA BURNT (Ha)	%	AREA BURNT (Ha)	%
Mashonaland West	5 775 153	525 022	9	475 245	8
Mashonaland Central	2 828 463	130 100	5	206 319	7
Mashonaland East	3 234 476	120 000	4	182 220	6
Manicaland	3 610 262	32 100	1	37 137	1
Midlands	4 919 691	288 000	6	90 192	2
Masvingo	5 668 514	45 600	1	18 912	0
Matabeleland North	7 489 677	363 000	5	130 784	2
Matabeleland South	5 414 666	150 000	3	38 466	1
Total	39 050 924	1 653 822	4	1 179 275	3

Source: Environmental Management Agency.

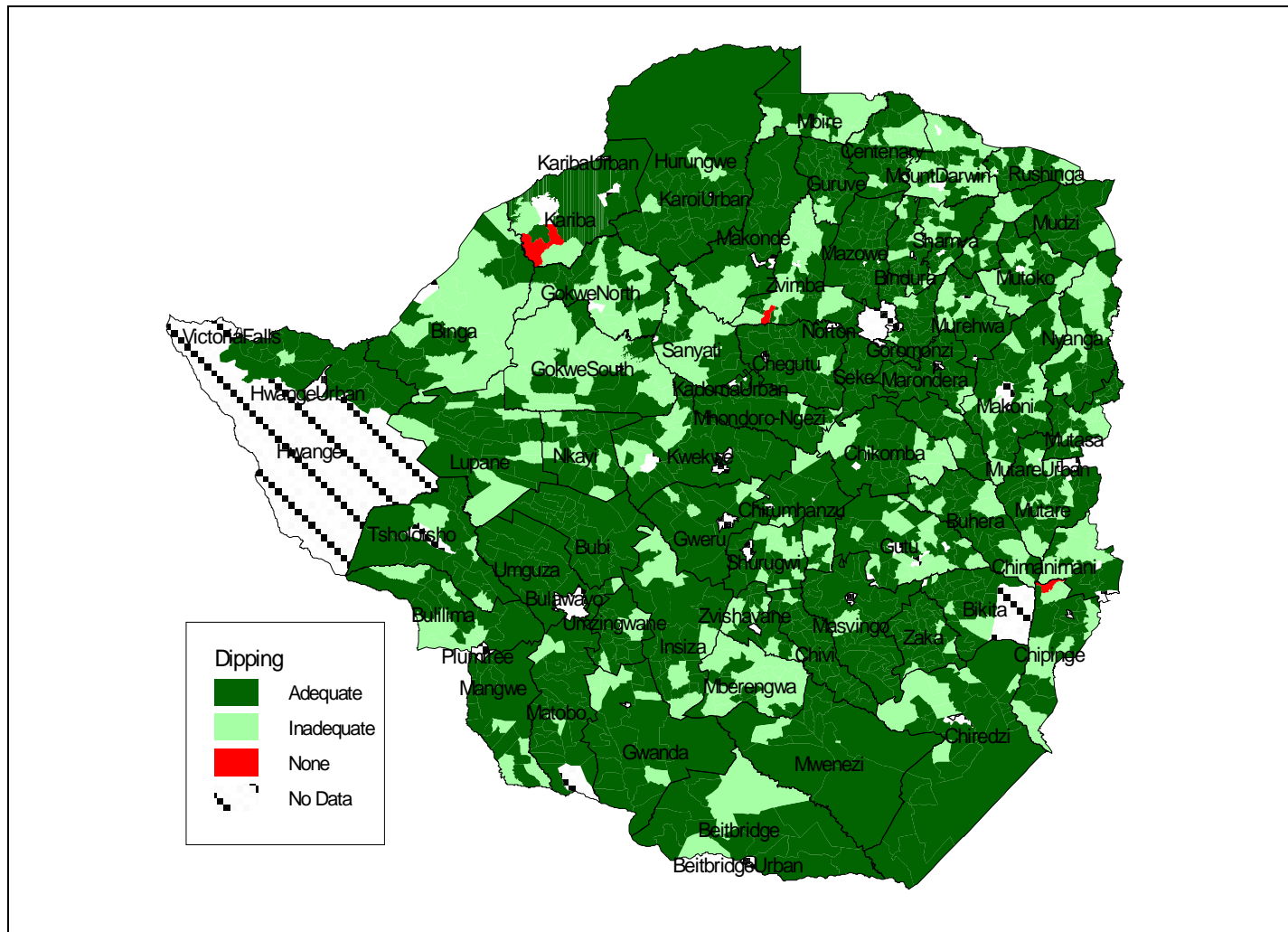
FIGURE 21: GRAZING AREA DESTROYED BY WILD FIRES BY PROVINCE (Ha)



Source: Environmental Management Agency.

5 LIVESTOCK HEALTH SITUATION

FIG 22: DIPPING SITUATION 2014/15



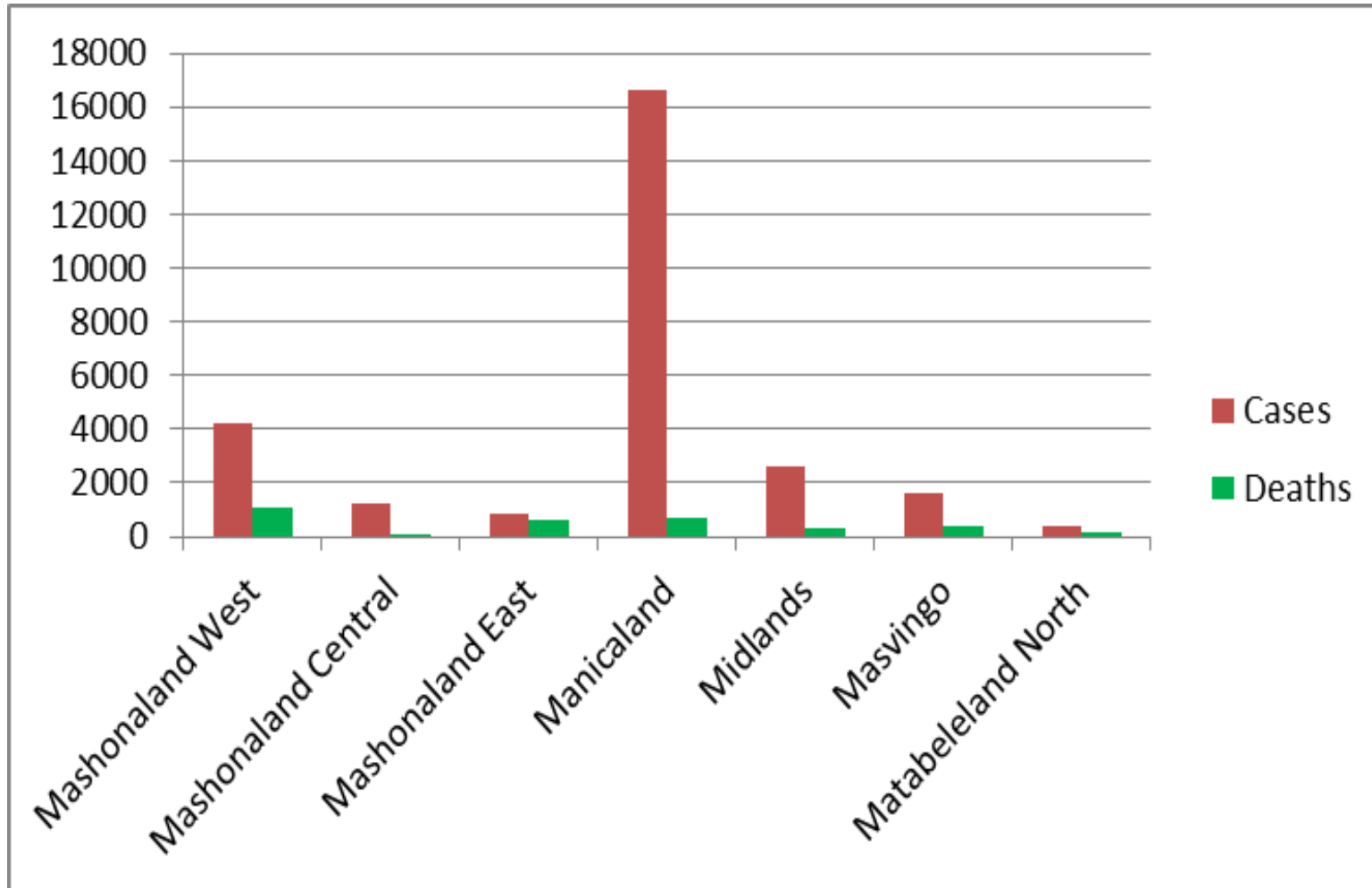
5.1 VACCINATIONS

TABLE 39: NUMBER OF VACCINATIONS

Province	FMD	Rabies	Newcastle
Mashonaland West	0	23 580	462 453
Mashonaland Central	0	22 315	1 011 289
Mashonaland East	0	22 367	718 056
Manicaland	110 595	38 724	1 158 104
Midlands	292 495	63 137	890 189
Masvingo	981 304	34 736	1 435 619
Matabeleland North	211 719	43 004	338 609
Matabeleland South	119 046	23 660	572 569
Total	1 715 159	271 523	6 586 888

TABLE 40: TICK BORNE DISEASES IN 2014

PROVINCE	NUMBER OF CASES	NUMBER OF DEATHS
Mashonaland West	4 250	1 049
Mashonaland Central	1 216	122
Mashonaland East	863	625
Manicaland	16 661	700
Midlands	2 643	316
Masvingo	1 618	376
Matabeleland North	404	134
Matabeleland South	865	311
TOTALS	28 520	3 633

Fig 23: TICK BORNE DISEASES IN 2014.

5.2 FOOT AND MOUTH DISEASE

Outbreaks were recorded in four provinces

TABLE 41: FOOT AND MOUTH OUTBREAKS BY PROVINCE

Province	Cases	No. of dip tanks affected
Matabeleland North	7	2
Matabeleland South	52	4
Masvingo	9 029	106
Midlands	1 110	15
Total	10 198	127

5.3 RABIES

Two human cases were recorded during the period under review.

TABLE 42: RABIES OUTBREAKS IN 2014 BY PROVINCE

PROVINCE	CASES
Mashonaland West	28
Mashonaland Central	22
Mashonaland East	87
Manicaland	38
Midlands	59
Masvingo	16
Matabeleland North	42
Matabeleland South	40
TOTAL	332

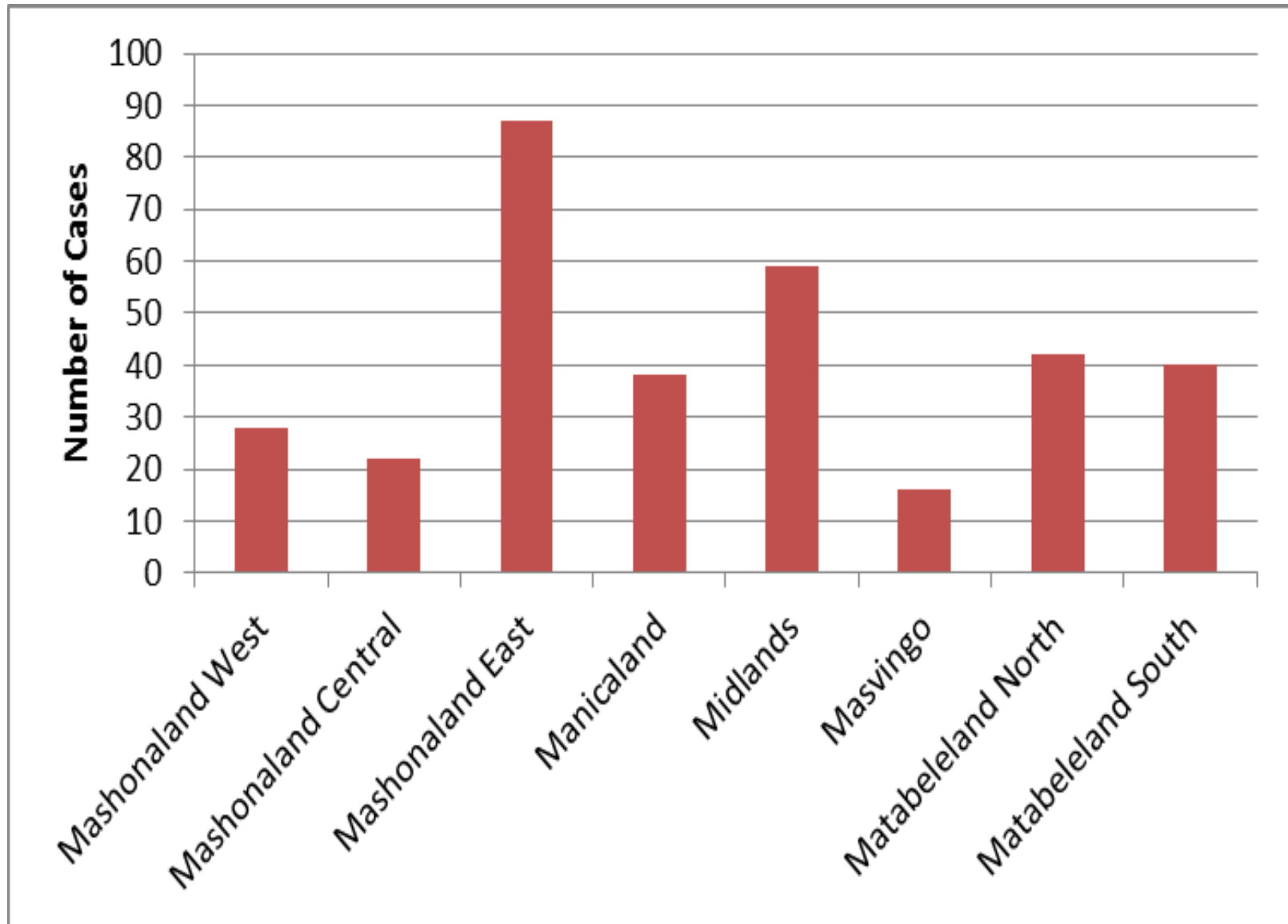
Fig 24: RABIES CASES IN 2014 BY PROVINCE.

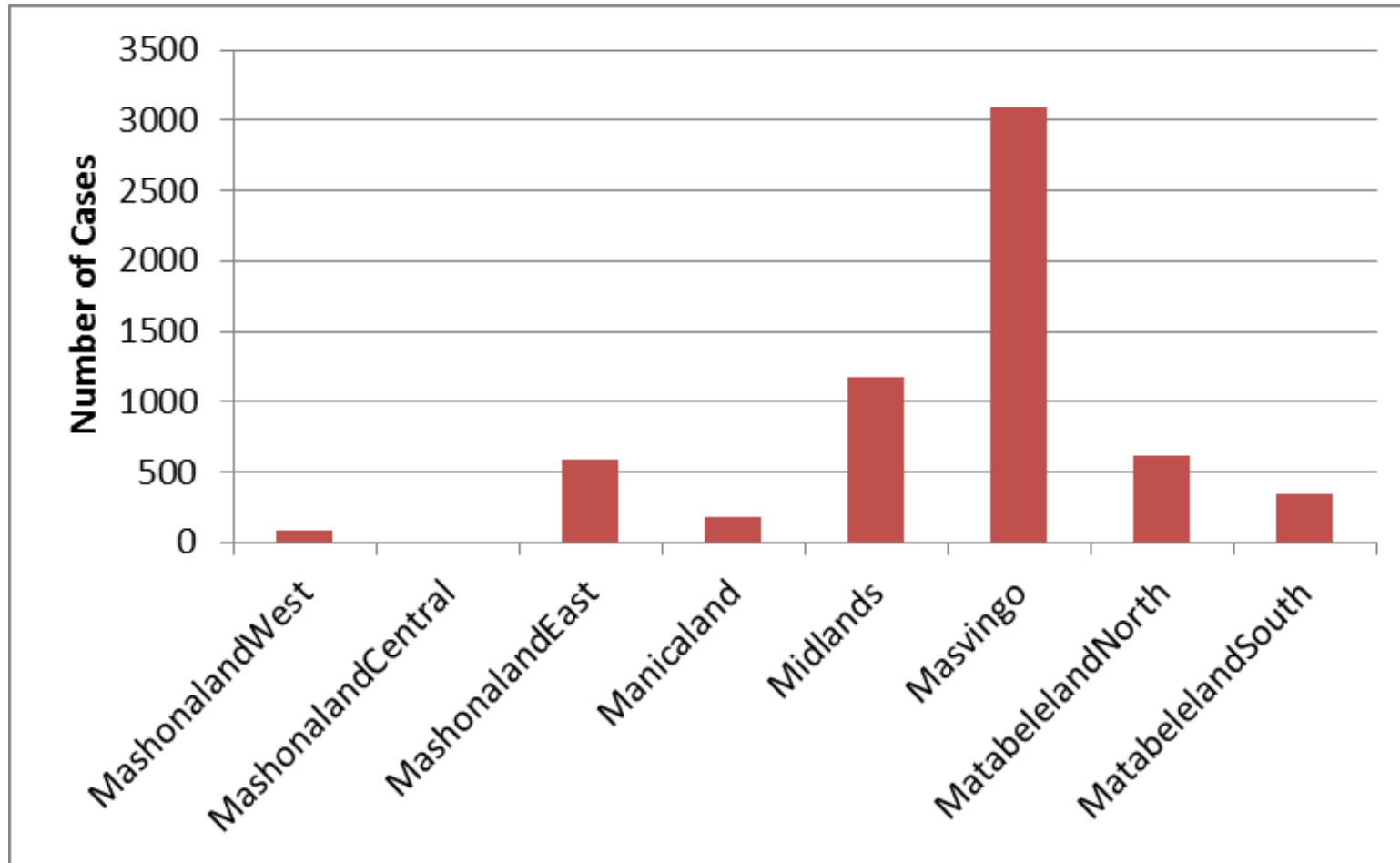
Table 43: RABIES CASES BY SPECIES IN 2014

SPECIES	CASES
Cattle	63
Dogs	224
Goats	17
Donkeys	5
Human	8
TOTAL	317

5.4 NEWCASTLE DISEASE

TABLE 44: NEW CASTLE DISEASE CASES IN 2014.

Province	No. outbreaks	No. of locations affected	Cases
Mashonaland West	2	2	88
Mashonaland Central	0	0	0
Mashonaland East	4	4	583
Manicaland	3	3	175
Midlands	9	12	1 167
Masvingo	7	16	3 096
Matabeleland North	11	11	613
Matabeleland South	2	4	349
Total	38	52	6 071

Fig 25: NEW CASTLE DISEASE CASES IN 2014.

5.5 ANTHRAX

TABLE 45: ANTHRAX CASES AND DEATHS IN 2014

PROVINCE	CASES	DEATHS
Mashonaland West	31	26
Mashonaland Central	0	0
Mashonaland East	5	5
Manicaland	75	55
Midlands	3	2
Masvingo	16	13
Matabeleland North	4	4
Matabeleland South	4	4
Total	138	109

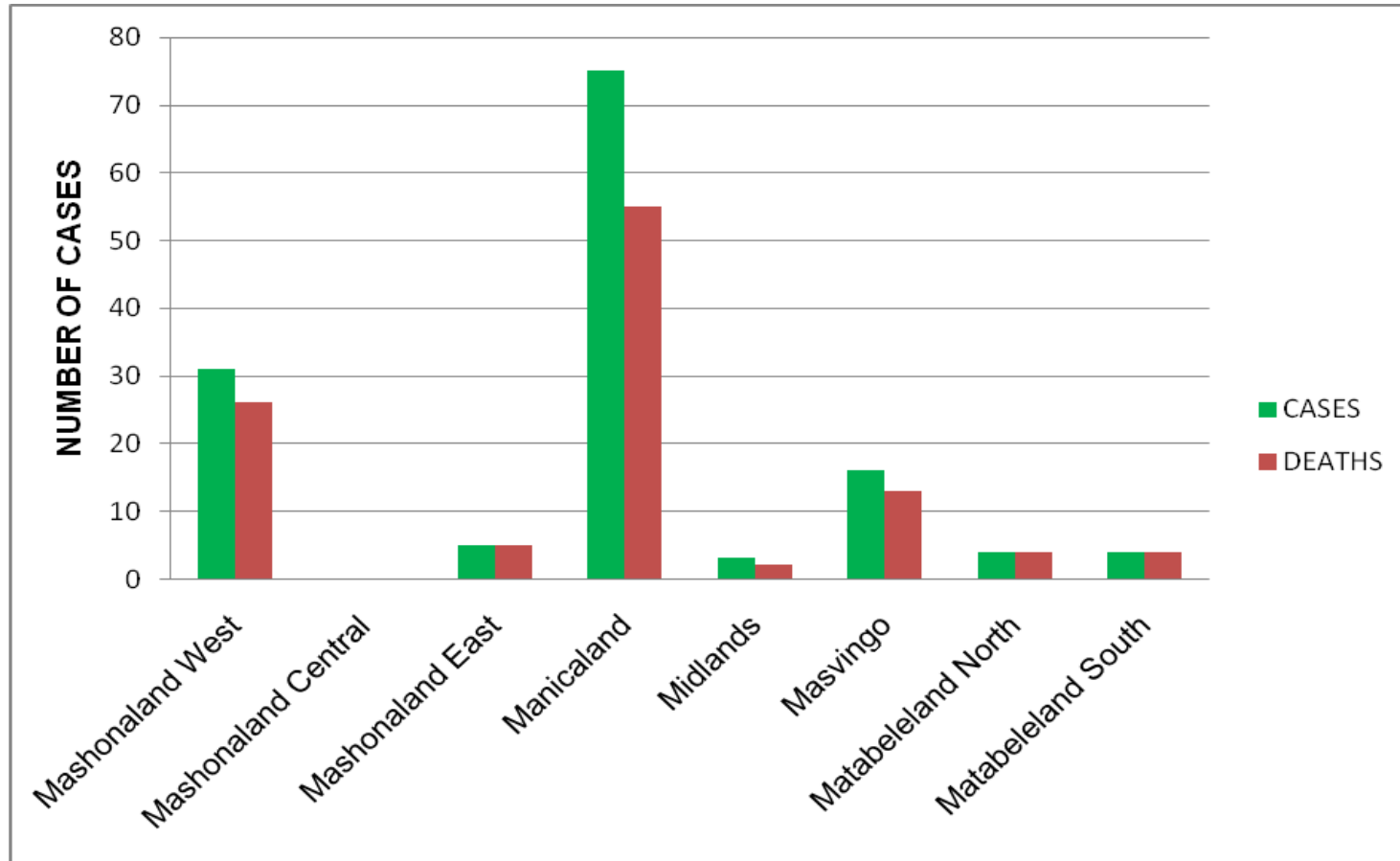
FIG 26: ANTHRAX CASES AND DEATHS

Table 46: Fowl Pox Outbreaks

Province	No. of outbreaks	Cases	Deaths
Mashonaland West	57	1 634	210
Mashonaland Central	31	304	89
Mashonaland East	39	611	154
Manicaland	140	1 486	510
Midlands	66	644	107
Masvingo	61	1 860	584
Matabeleland North	30	538	132
Matabeleland South	99	1 105	401
Total	523	8 182	2 187

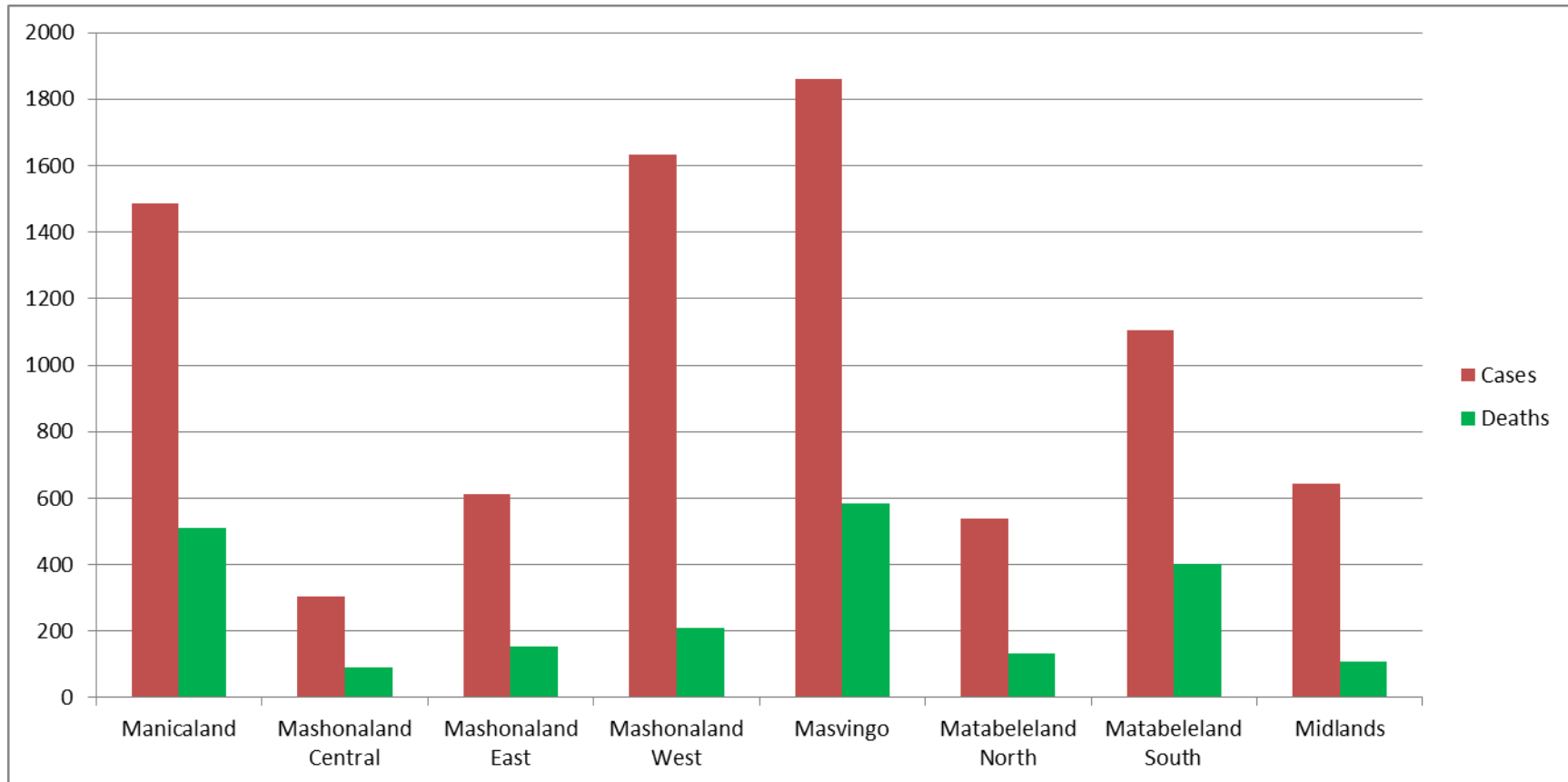
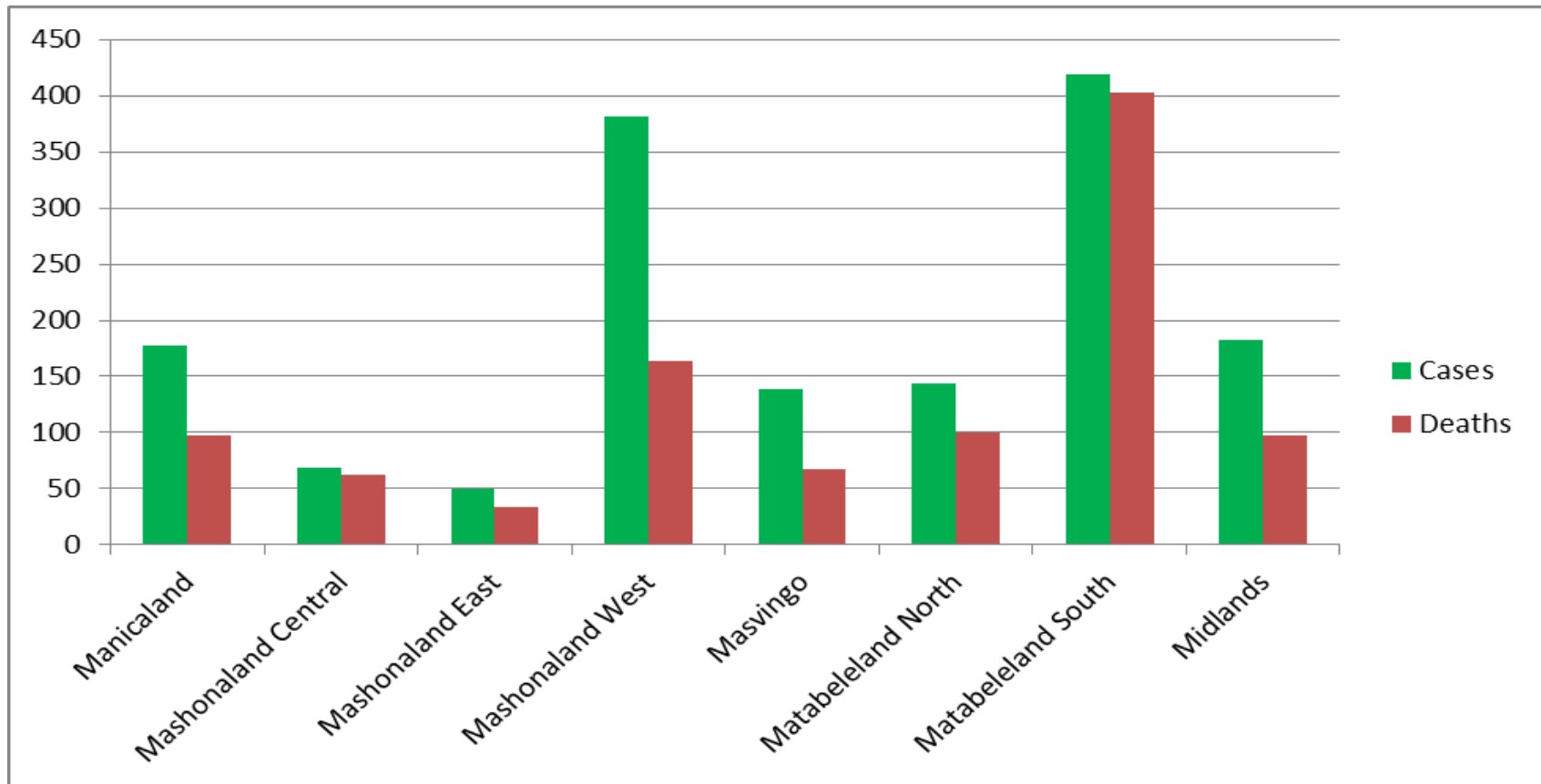
Figure 27: Fowl Pox Cases and Deaths

TABLE 47: BLACK LEG CASES AND DEATHS IN 2014

Province	Cases	Deaths
Manicaland	178	97
Mashonaland Central	69	63
Mashonaland East	50	34
Mashonaland West	381	164
Masvingo	139	67
Matabeleland North	144	100
Matabeleland South	419	403
Midlands	182	98
Total	1 562	1 026

FIG 28: BLACK LEG CASES AND DEATHS

5.7 LUMPY SKIN DISEASE

TABLE 48: LUMPY SKIN DISEASE CASES AND DEATHS

PROVINCE	CASES	DEATHS
Mashonaland West	2 459	94
Mashonaland Central	659	15
Mashonaland East	913	43
Manicaland	1 980	98
Midlands	5 279	280
Masvingo	20 330	912
Matabeleland North	918	57
Matabeleland South	2 603	223
Total	35 141	1 722