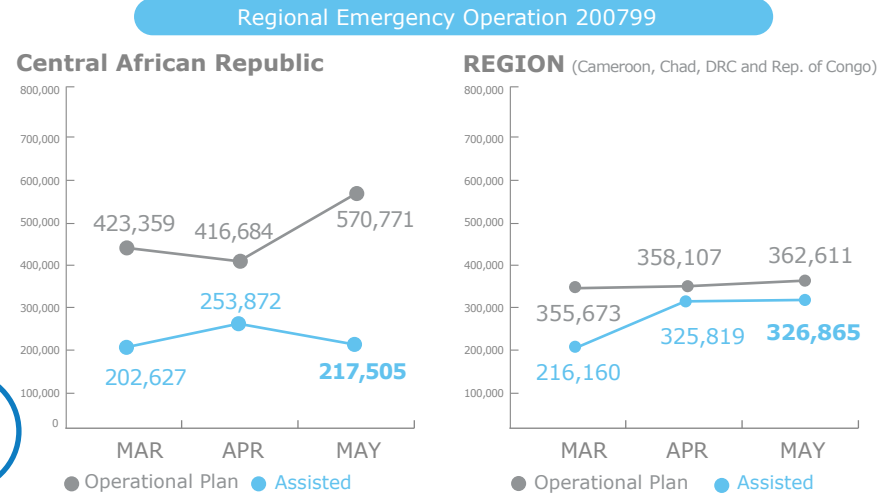


PEOPLE ASSISTED



FUNDING



Regional Emergency Operation 200799

July – December 2017  
**USD 14m**  
Net Funding Requirements

Source: WFP, 22 June 2017

2017 PROJECT RESOURCES

Regional Special Operation 200934  
Logistics Optimization of supply corridors

2017 Received: USD 0m | 2017 Requirements: USD 162,983

Special Operation 200997  
Logistics & Emergency Telecommunications Clusters

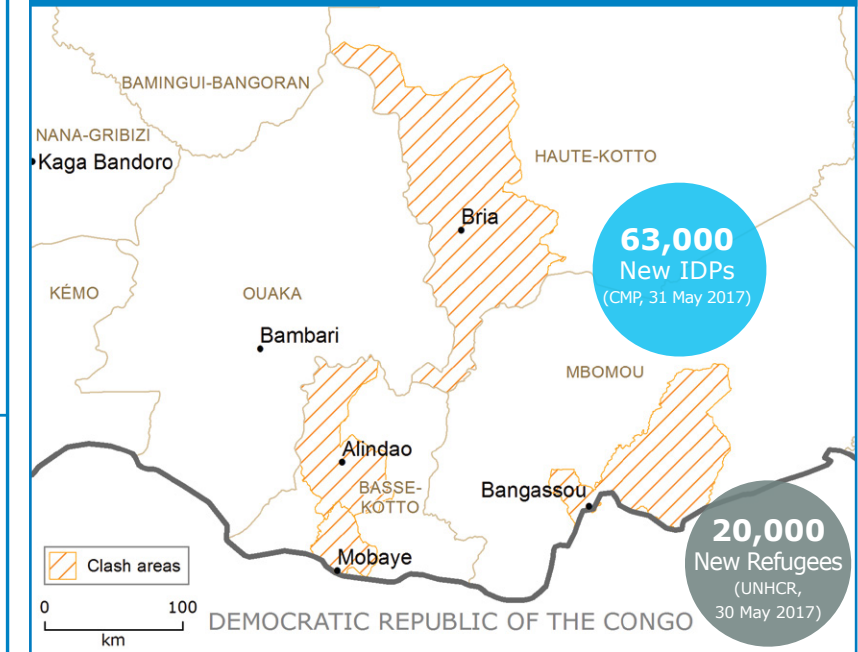
2017 Received: USD 0m | 2017 Requirements: USD 380,788

Special Operation 201045  
UN Humanitarian Air Service (UNHAS)

2017 Received: USD 8m | 2017 Requirements: USD 15m

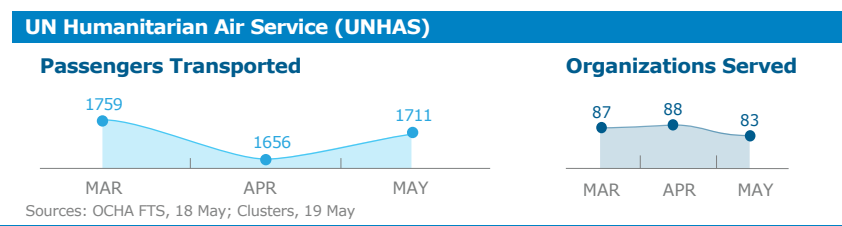
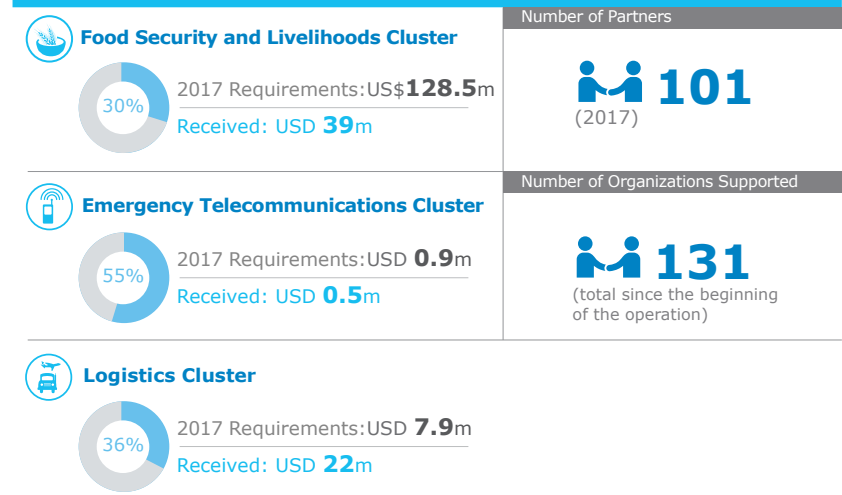
Source: WFP, 09 June 2017

CRISIS IN HAUTE-KOTTO, BASSE-KOTTO and MBOMOU



C.A.R. Immediate Response Emergency Operation (IR - EMOP) 201078 (May- August 2017):  
**USD 1.5m** Total Requirements

WFP LED & CO-LED CLUSTERS



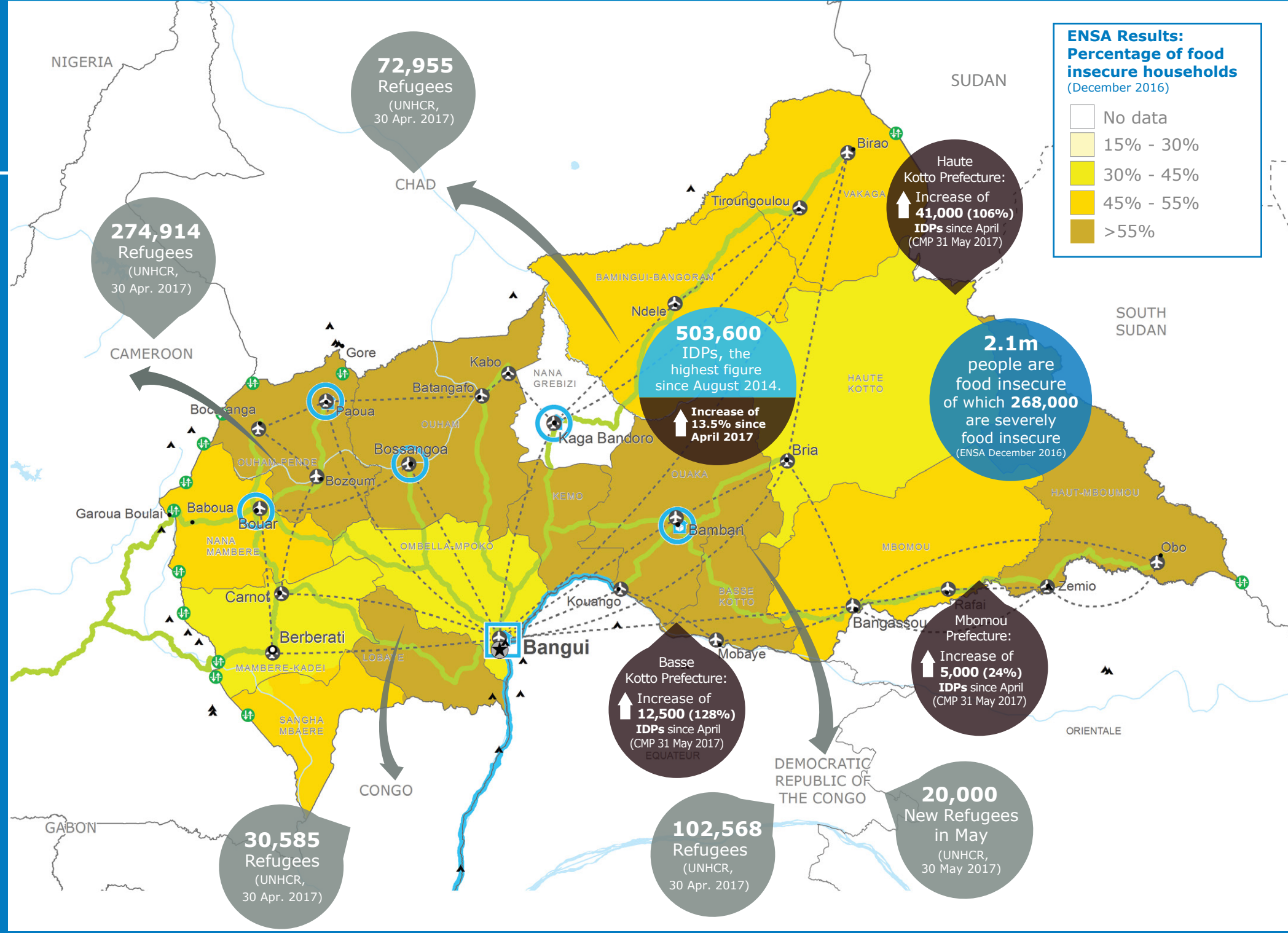
**WFP LEVEL 2 EMERGENCY**  
SINCE 02 JUNE 2015

For more information, see the **SITUATION REPORT** and **COUNTRY BRIEF**  
[www.wfp.org/countries/central-african-republic](http://www.wfp.org/countries/central-african-republic)

2A Regional Emergency Operation 200799  
<http://documents.wfp.org/stellent/groups/public/documents/ep/WFP284303.pdf>

Produced by the WFP Operations Centre (OPSCEN) jointly with Country Office and Regional Bureau Dakar

This dashboard is based on best available information at the time of production. Future updates may vary as new information becomes available.



- Country Office
- Warehouse
- UNHAS Connection
- National Capital
- International Boundary
- Sub Office
- Refugee Camp
- UNHAS Route
- Major Town
- Province boundary
- Field Office
- Road Supply Route
- Border Crossing Point
- Intermediate Town
- River
- Waterway Supply Route
- Small town
- Surface Waterbody

Sources: WFP, UNGIWG, GAUL, GLCSC, OCHA, UNHCR

The designations employed and the presentation of material in the map(s) do not imply the expression of any opinion on the part of WFP concerning the legal or constitutional status of any country, territory, city or sea, or concerning the delimitation of its frontiers or boundaries. © World Food Programme 2017

