

### DROUGHT EMERGENCY ASSISTANCE

Number of people targeted: **9.7 M**

WFP/govt: **7.1 M**

JEOP: **2.6 M**  
Joint Emergency Operation Plan  
NGO Consortium

### EMERGENCY RELIEF

People targeted: **9.7 million**, as of 30 November 2016

**ROUND 8**

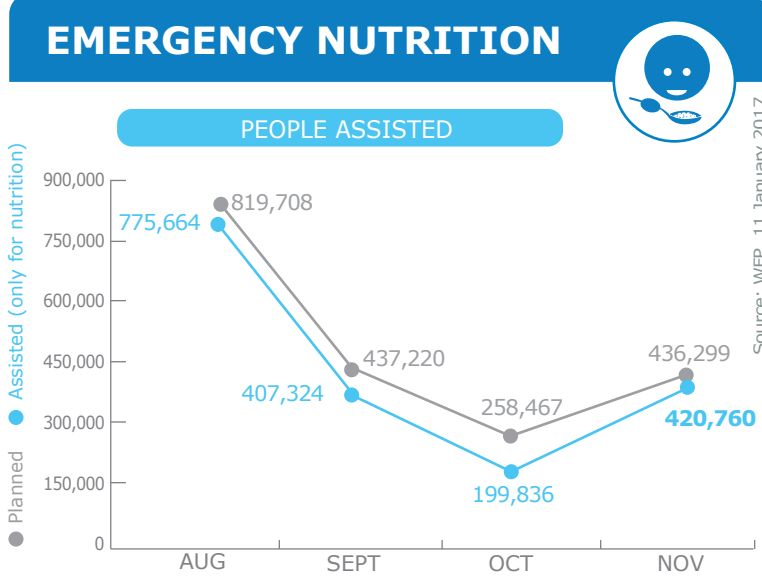
DISPATCH: **87%**

DISTRIBUTION: **41%**

**ROUND 9**

DISPATCH: **51%**

DISTRIBUTION: **18%**



### FUNDING

Jan - Jun 2017

Protracted Relief and Recovery Operation (PRRO) 200712

WFP funding shortfall **US\$174m**

### OPERATIONAL CHALLENGES

Resources

Humanitarian Access

For more information, see the **SITUATION REPORT** and **COUNTRY BRIEF** [www.wfp.org/countries/ethiopia](http://www.wfp.org/countries/ethiopia)

**2A PRRO 200712**  
<http://documents.wfp.org/stellent/groups/public/documents/ep/WFP284303.pdf>

Produced by the WFP **Operations Centre (OPSCEN)** jointly with Country Office and Regional Bureau Nairobi

This dashboard is based on best available information at the time of production. Future updates may vary as new information becomes available.

- Hotspot Woredas\* (December 2016)**
- Priority 1
  - Priority 2
  - Priority 3
- Country Office
  - Sub Office
  - Field Office
  - Warehouse
  - Road Supply Route
  - Refugee / IDP Camp
  - UNHAS Connection
  - UNHAS Route
  - National Capital
  - Major Town
  - Intermediate Town
  - Small Town
  - International Boundary
  - Undetermined Boundary
  - First level admin Boundary

\*The Hotspot Woreda classification triggers prioritized humanitarian response.

Sources: WFP, UNGIWG, GAUL, GLSCS, UNHCR  
The designations employed and the presentation of material in the map(s) do not imply the expression of any opinion on the part of WFP concerning the legal or constitutional status of any country, territory, city or sea, or concerning the delimitation of its frontiers or boundaries.  
© World Food Programme 2017

Source: WFP, 09 January 2017

Source: WFP, 11 January 2017

Source: WFP, 12 January 2017